

人體腸道寄生蟲圖譜

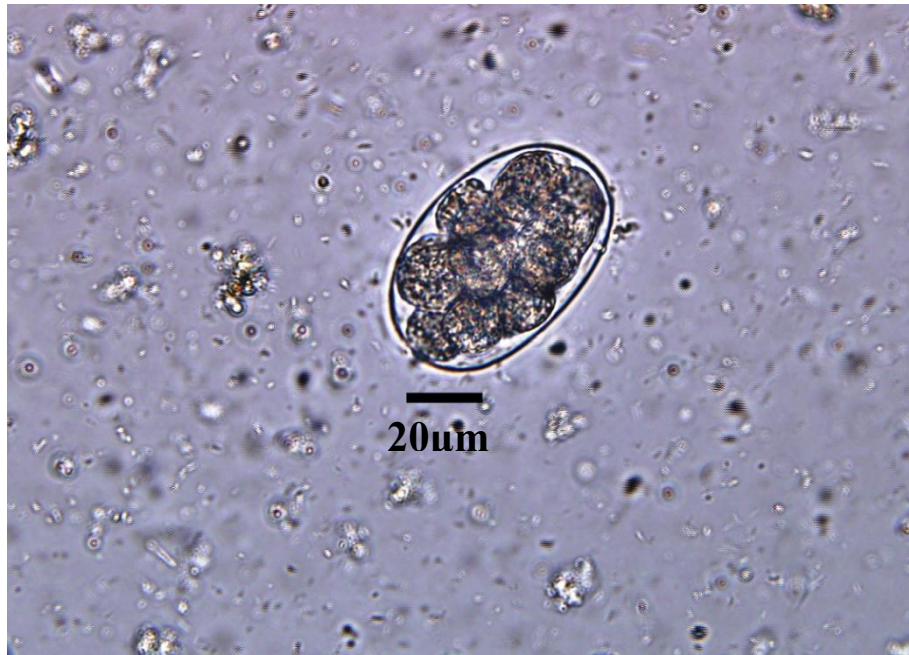


審閱：李淑英主任
攝影編排：許世芬

衛生福利部疾病管制署 編印

鈎蟲卵

(Hookworm egg)



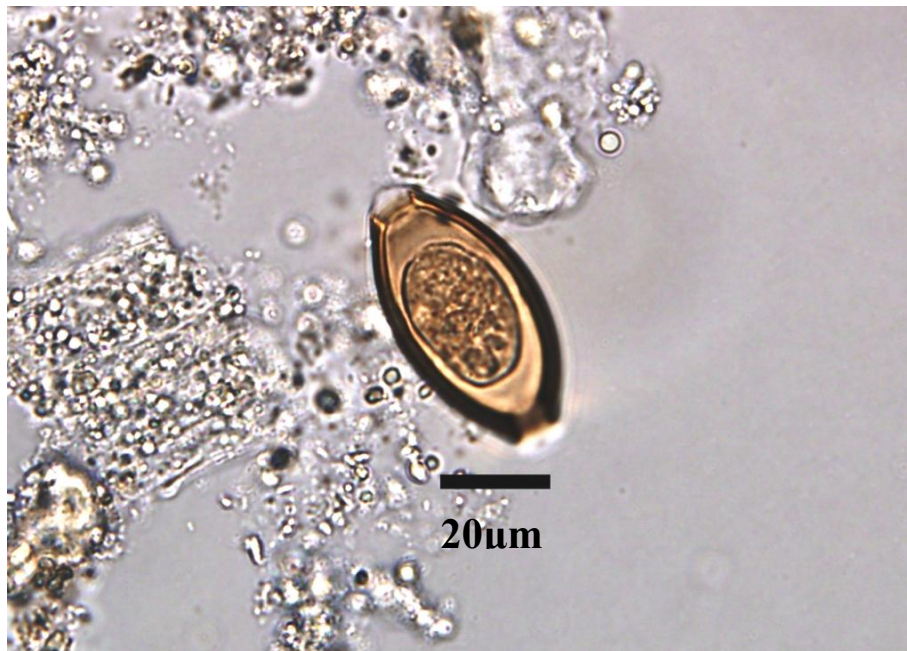
蟯蟲卵

(*Enterobius vermicularis* egg)



鞭蟲卵

(*Trichuris trichiura* egg)



蛔蟲未受精卵

(*Ascaris lumbricoides* egg)

(infertile)



糞小桿線蟲-桿狀幼蟲

(Strongyloides stercoralis)

-Rhabditiform larvae



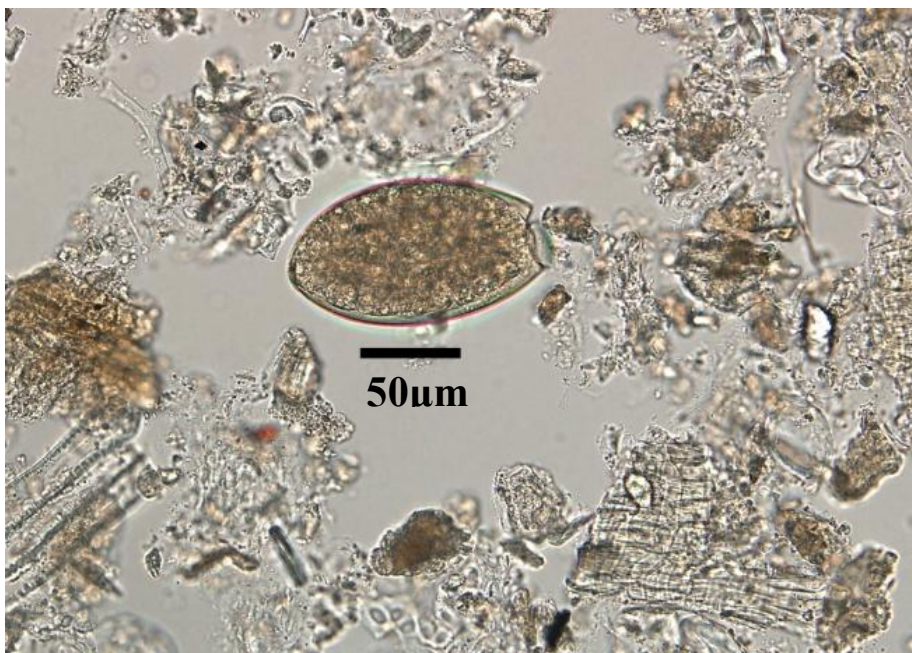
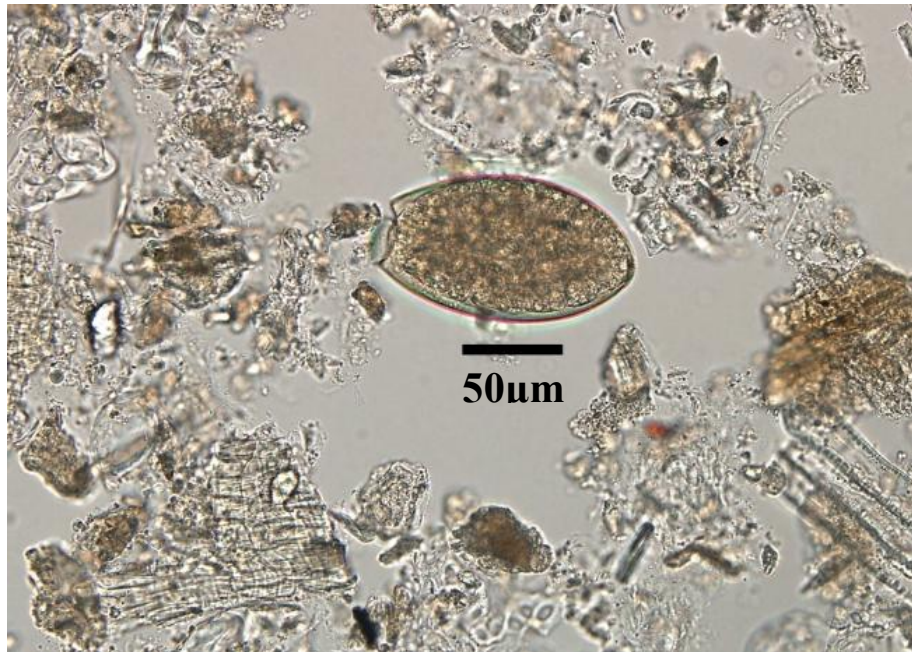
蛔虫受精卵

(*Ascaris lumbricoides* egg)(fertile)



棘口吸蟲卵

(*Echinostoma* spp. egg)



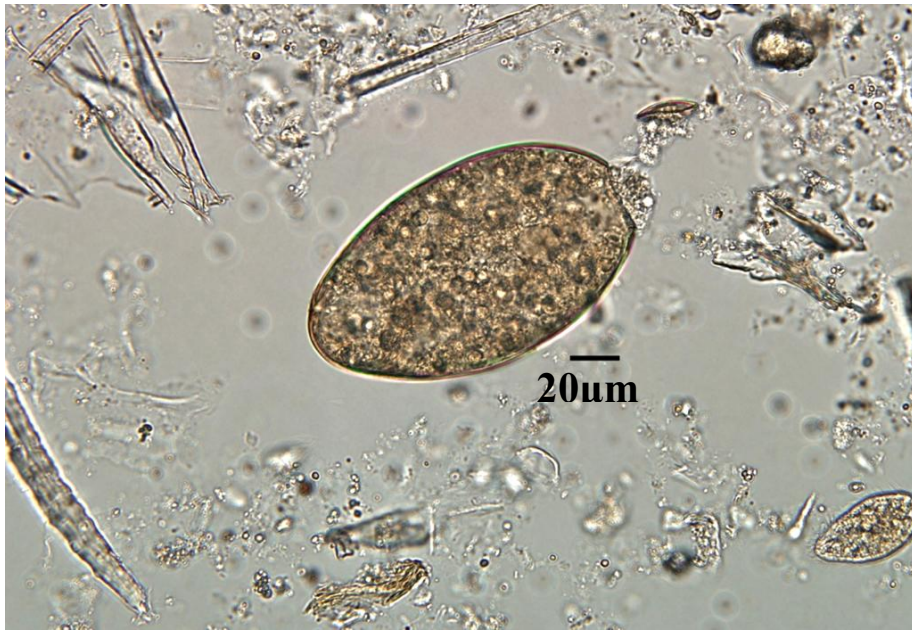
牛羊肝吸蟲卵

(*Fasciola hepaticas* egg)



薑片蟲卵

(*Fasciolopsis buski* egg)



中華肝吸蟲卵

(*Clonorchis sinensis* egg)



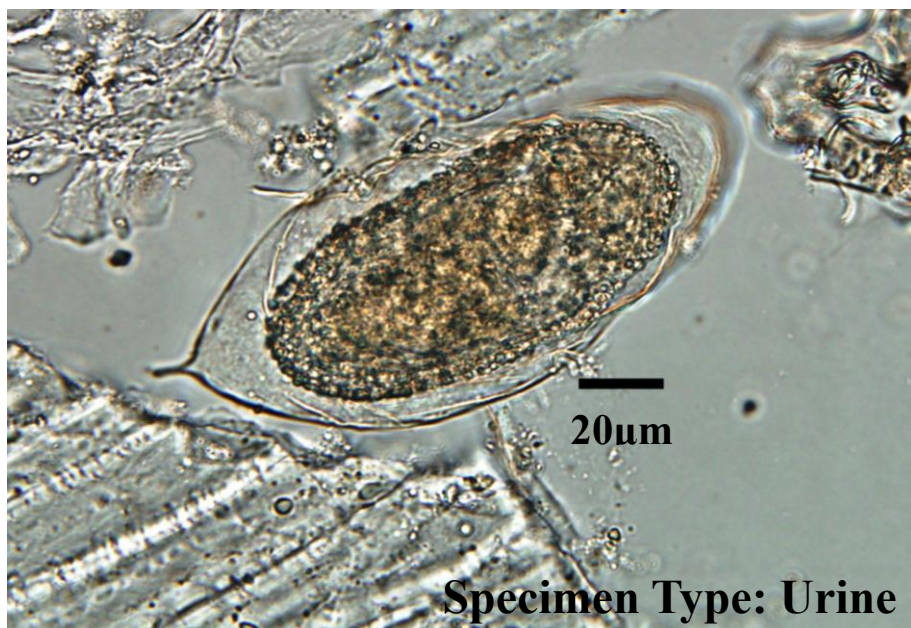
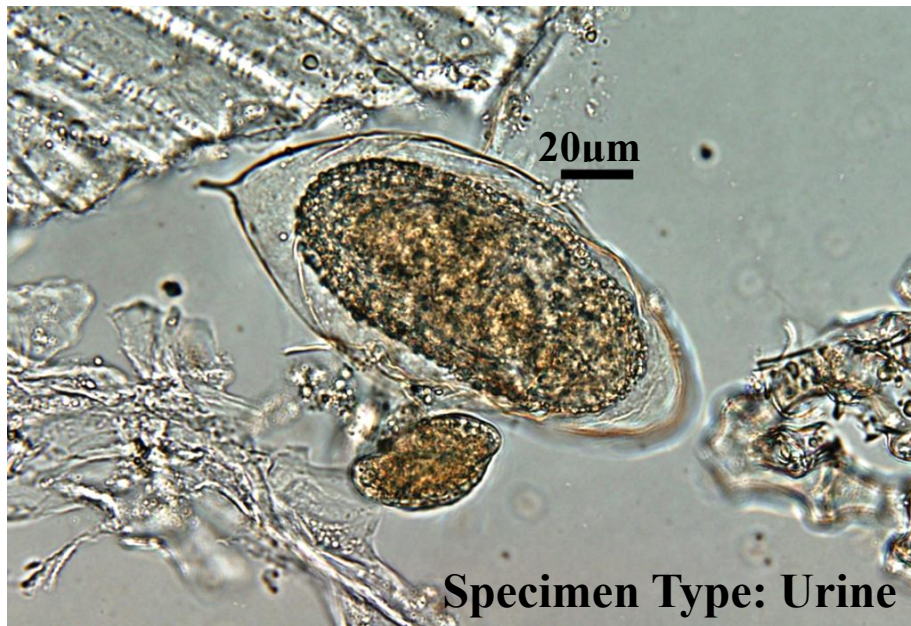
衛氏肺吸蟲卵

(*Paragonimus westermani* egg)



埃及血吸蟲卵

(*Schistosoma haematobium* egg)



曼氏血吸蟲卵

(*Schistosoma mansoni* egg)

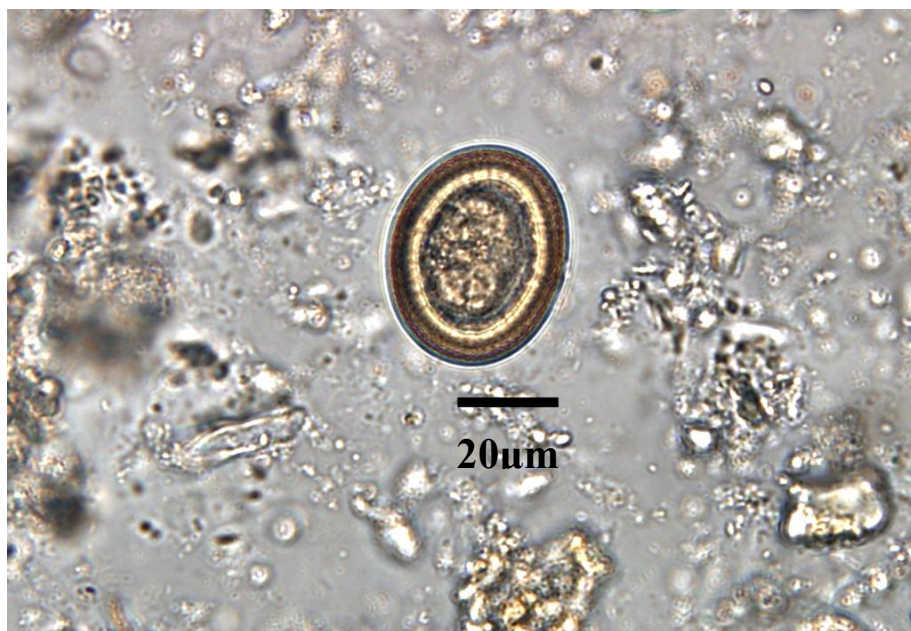


日本血吸蟲卵

(*Schistosoma japonicum* egg)



豬(牛)肉條蟲卵 (*Taenia* spp.egg)



廣節裂頭條蟲卵

(*Diphyllobothrium latum* egg)



短小包膜條蟲卵

(*Hymenolepis nana* egg)

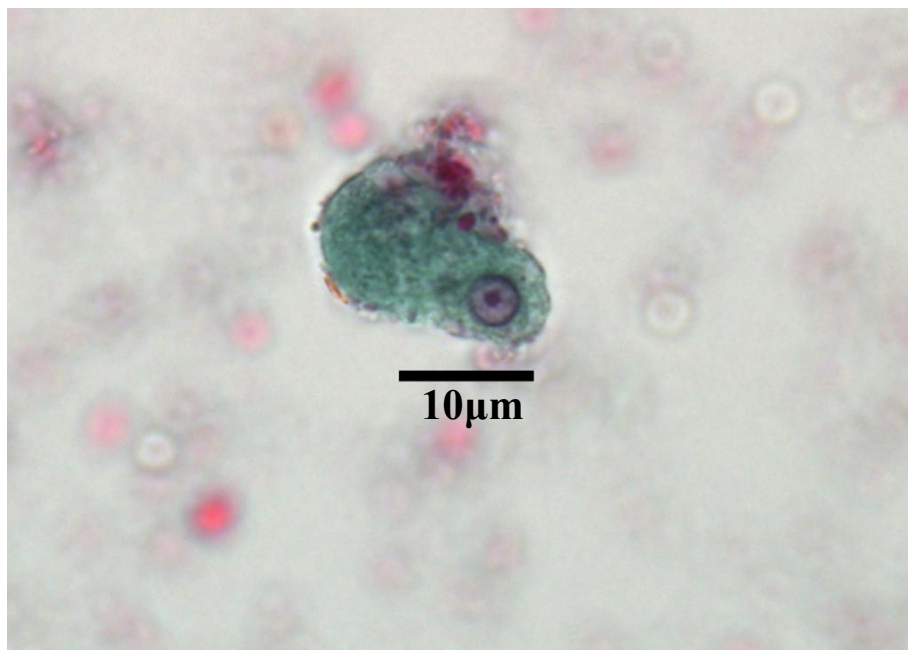
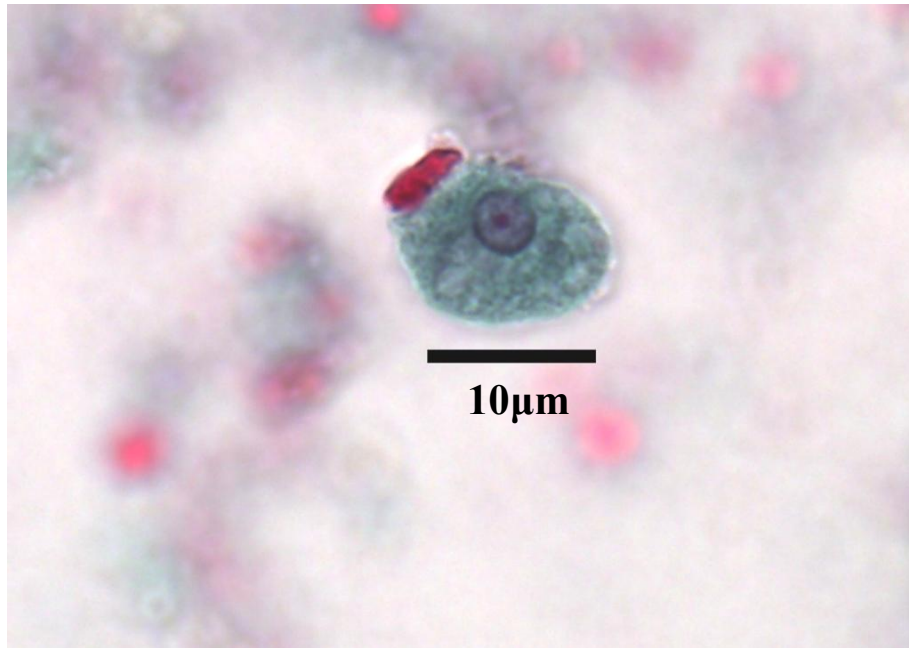


縮小包膜條蟲卵

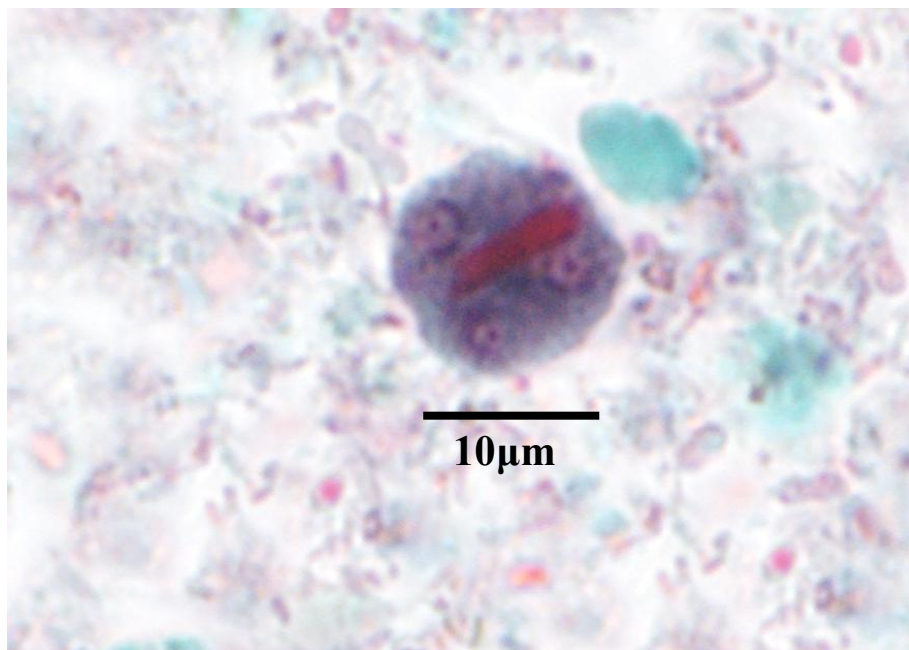
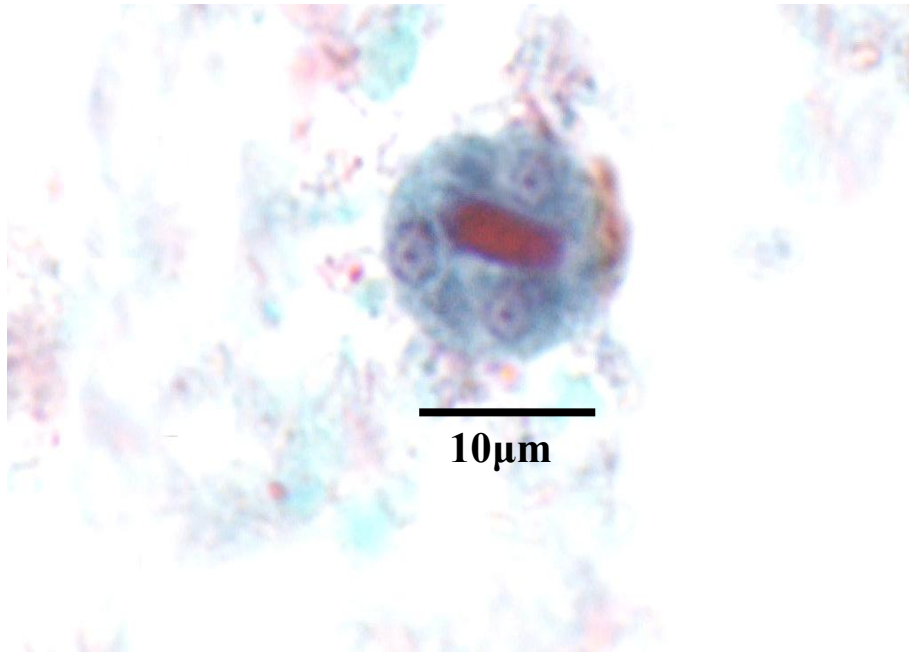
(*Hymenolepis diminuta* egg)



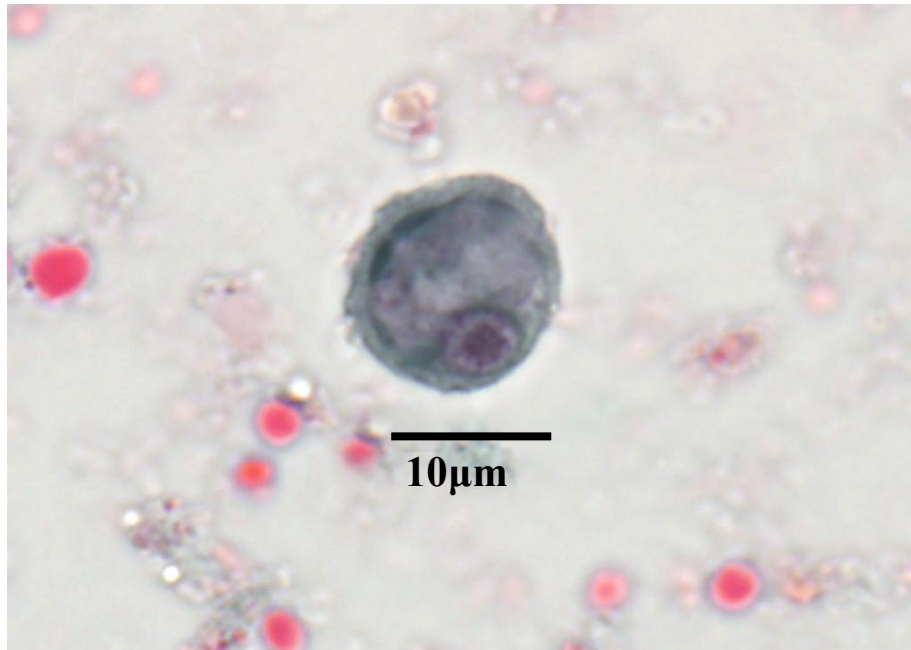
痢疾阿米巴/迪斯帕阿米巴-活動體
(*Entamoeba histolytica*/*E. dispar*) – Trophozoite



痢疾阿米巴/迪斯帕阿米巴-囊體
(*Entamoeba histolytica*/*E. dispar*) –Cyst

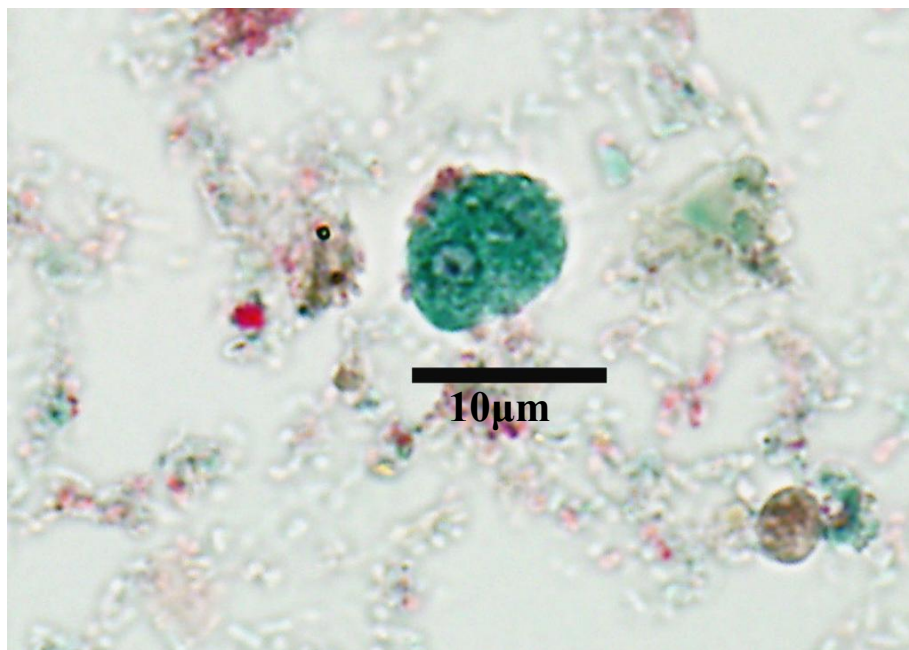
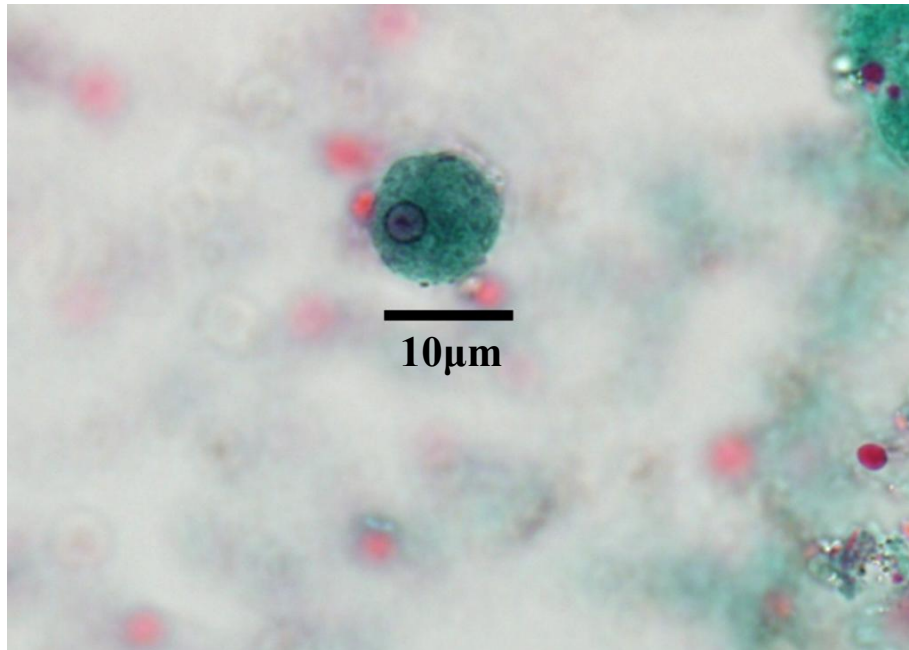


痢疾阿米巴/迪斯帕阿米巴-前囊體
(*Entamoeba histolytica*/*E. dispar*) - Precyst



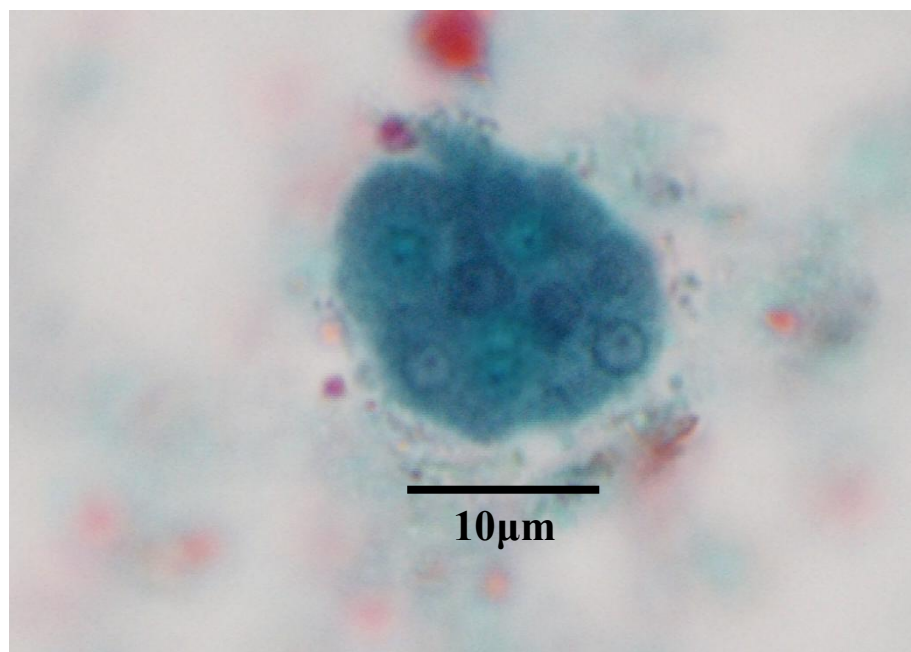
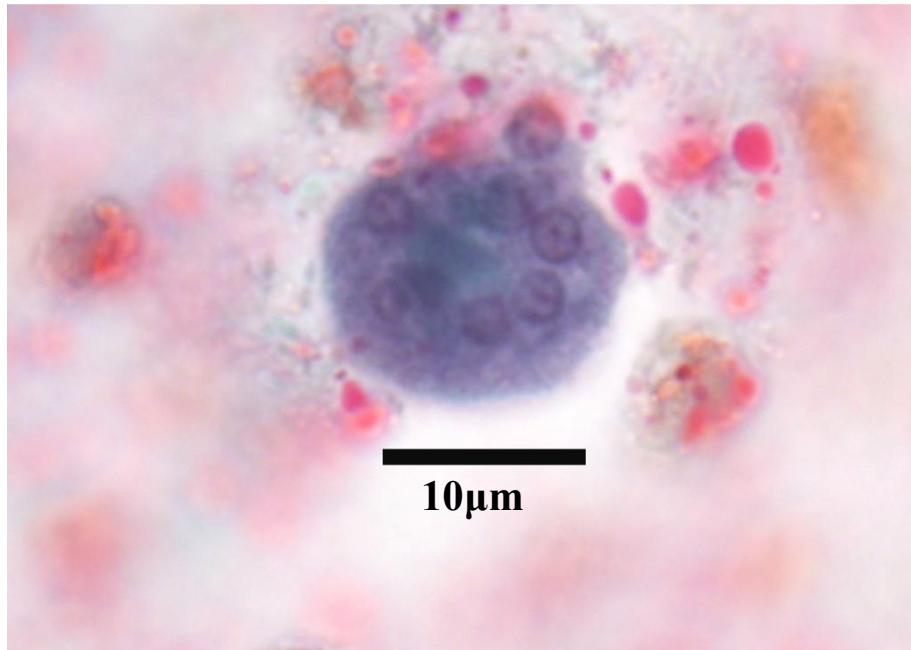
哈氏阿米巴-滋養體

(*Entamoeba hartmanni*) – Trophozoite



大腸阿米巴-囊體

(Entamoeba coli) – Cyst

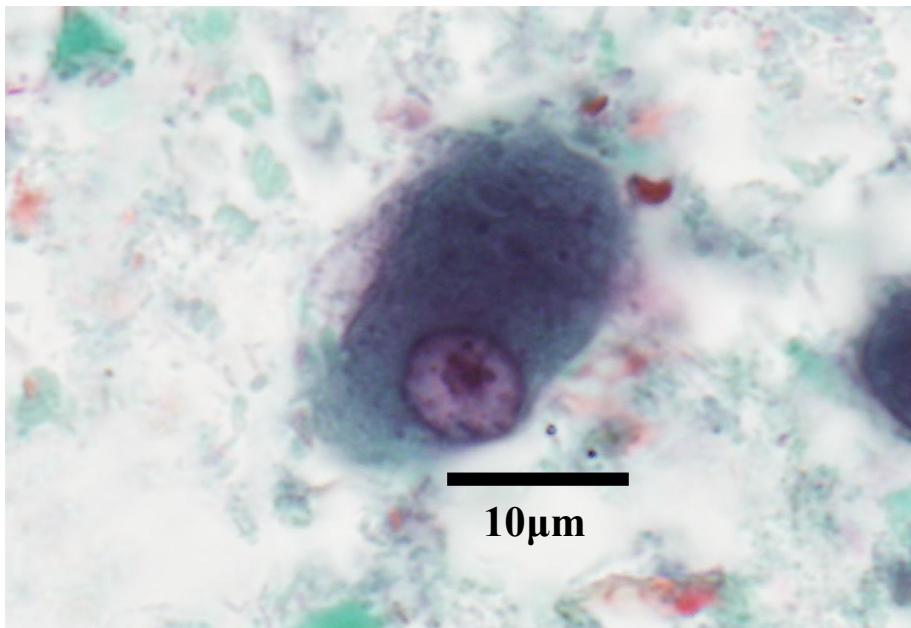
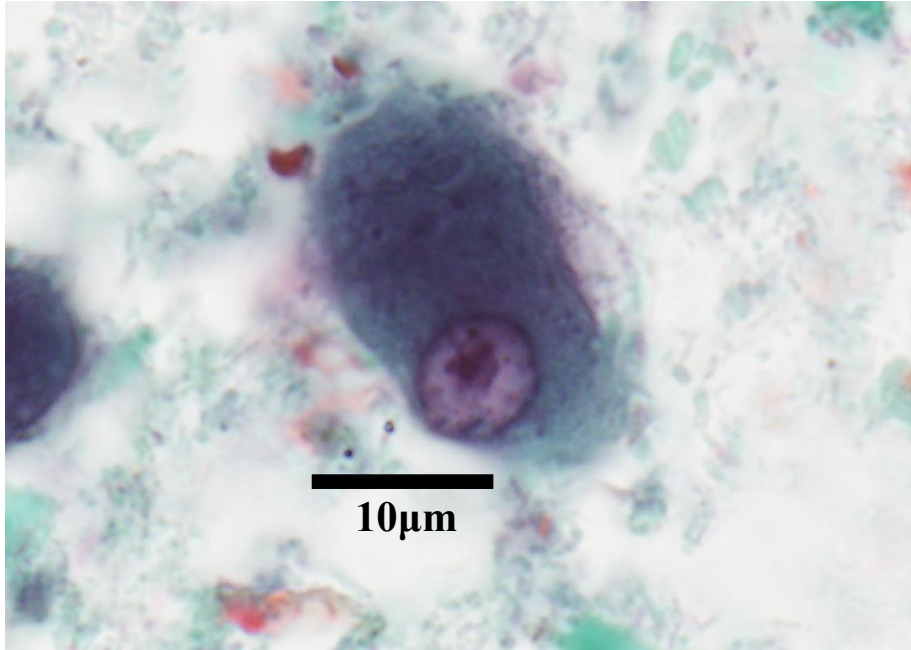


微小阿米巴-囊體 (*Endolimax nana*) –Cyst



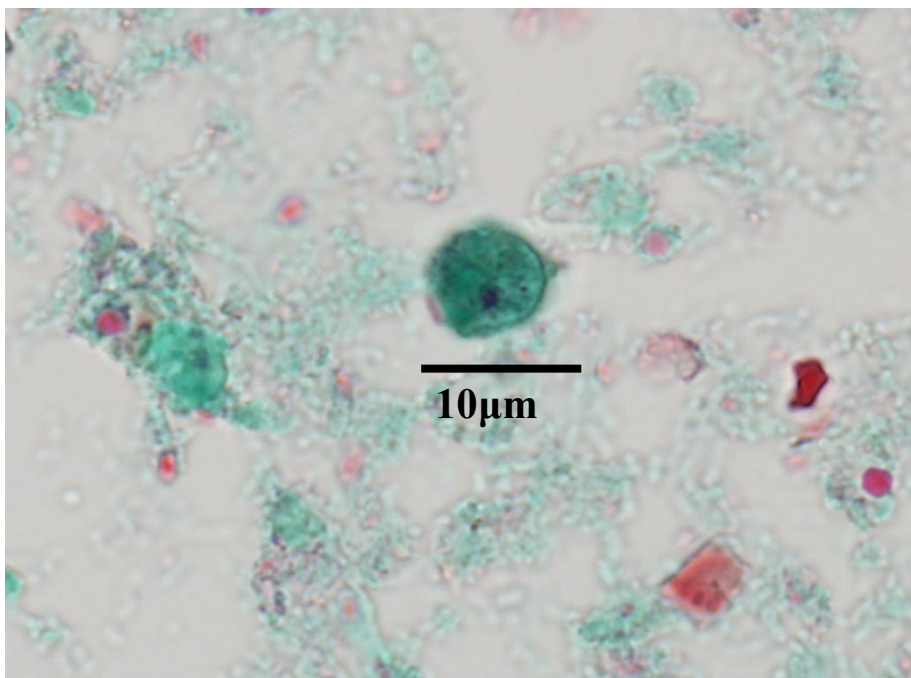
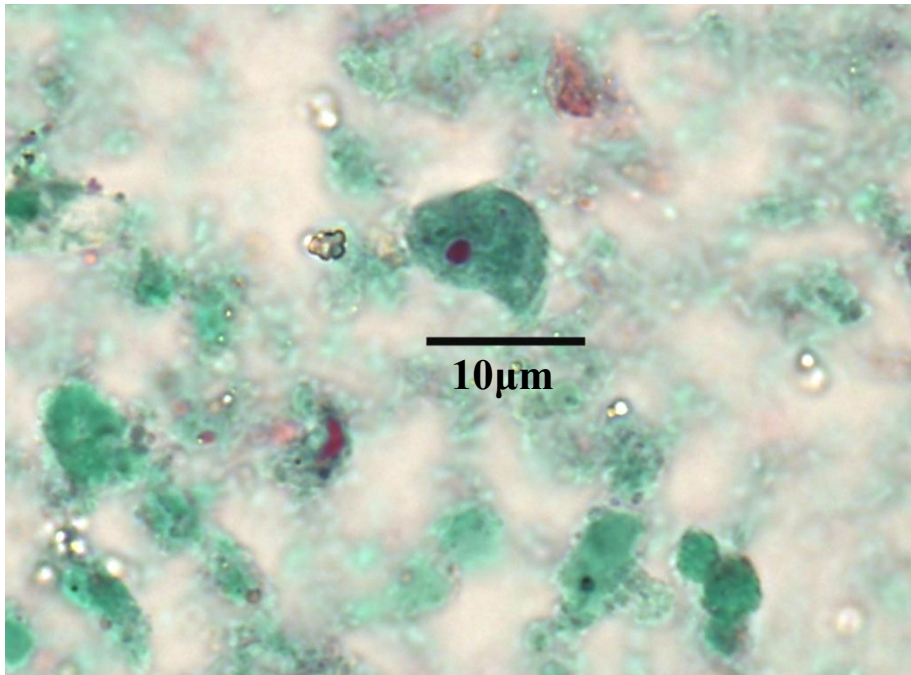
大腸阿米巴-滋養體

(*Entamoeba coli*) – Trophozoite



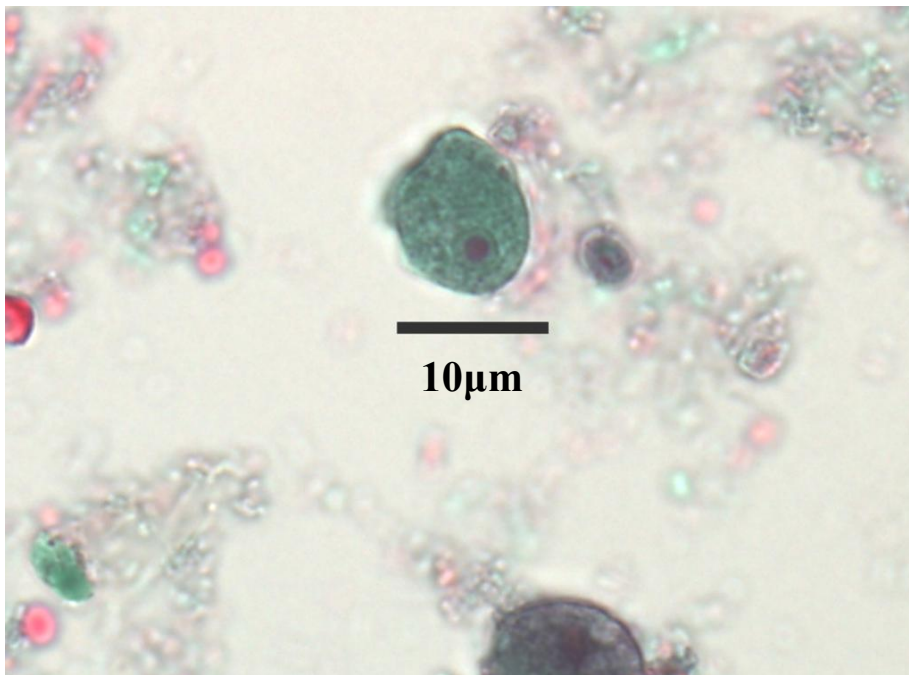
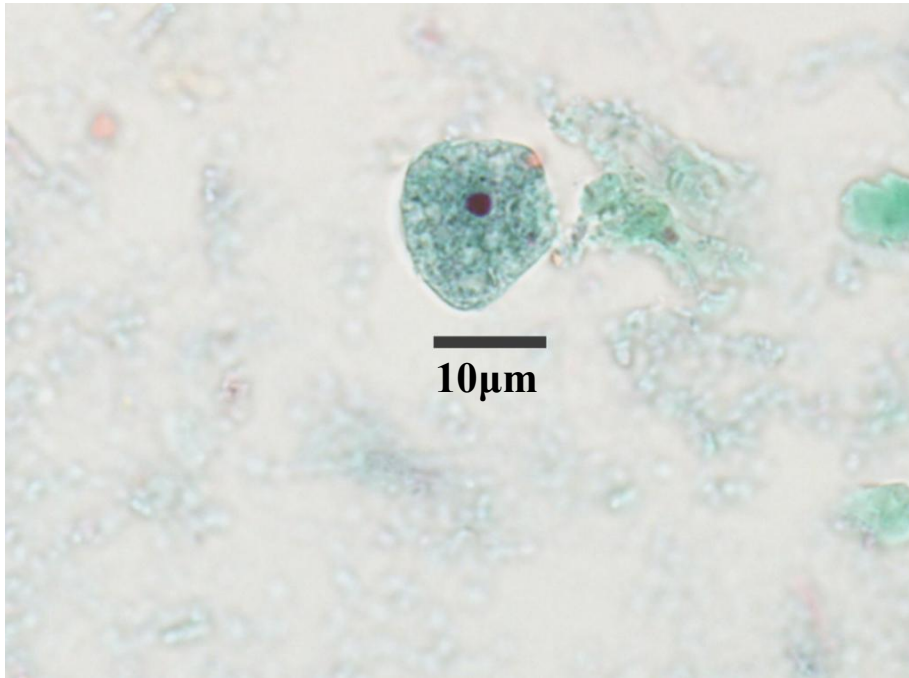
微小阿米巴-滋養體

(Endolimax nana) – Trophozoite



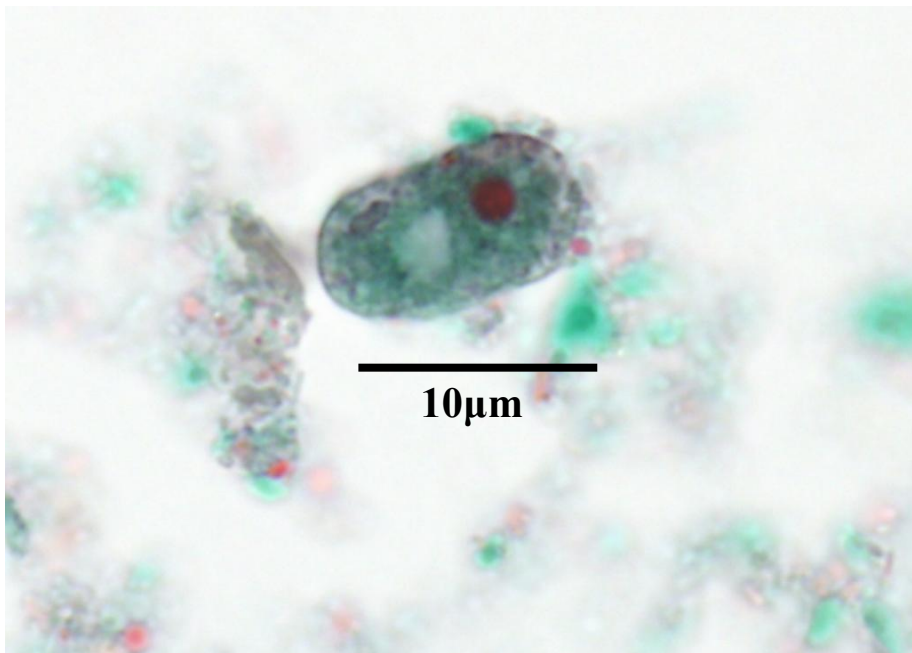
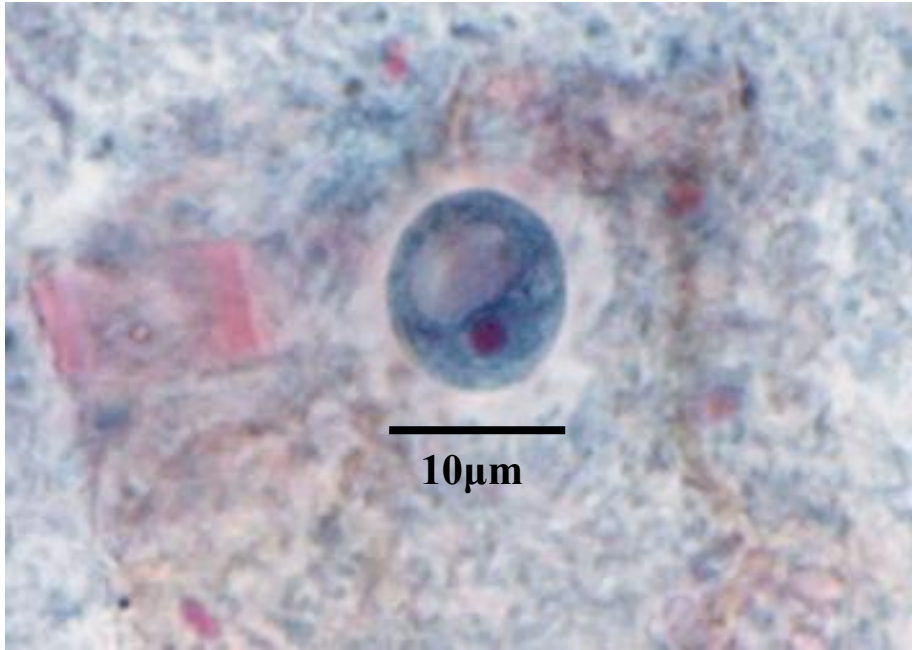
嗜碘阿米巴-滋養體

(Iodamoeba butschlii) – Trophozoite



嗜碘阿米巴-囊體

(Iodamoeba butschlii) –Cyst



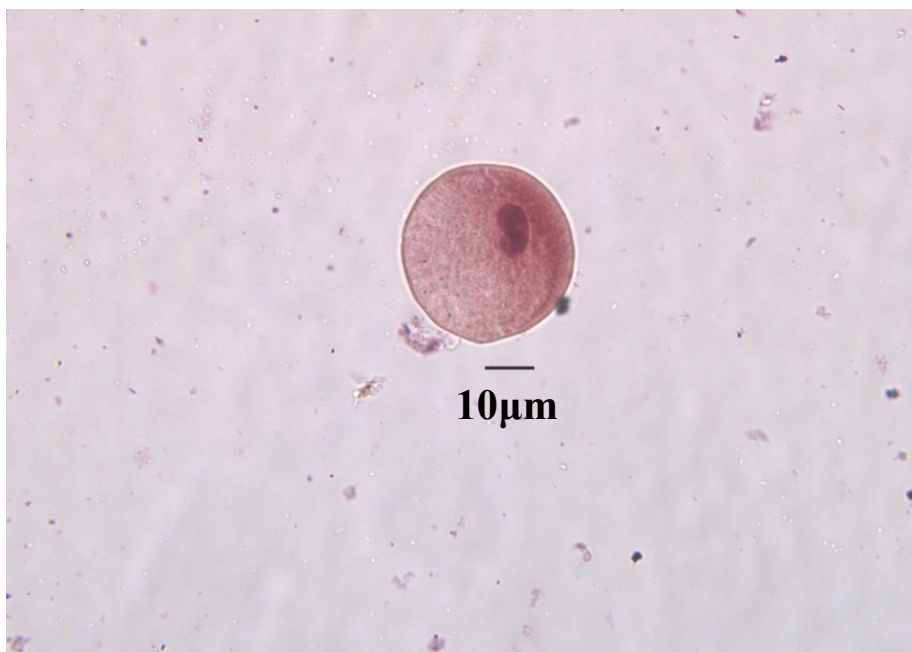
大腸纖毛蟲-滋養體

(Balantidium coli) – Trophozoite



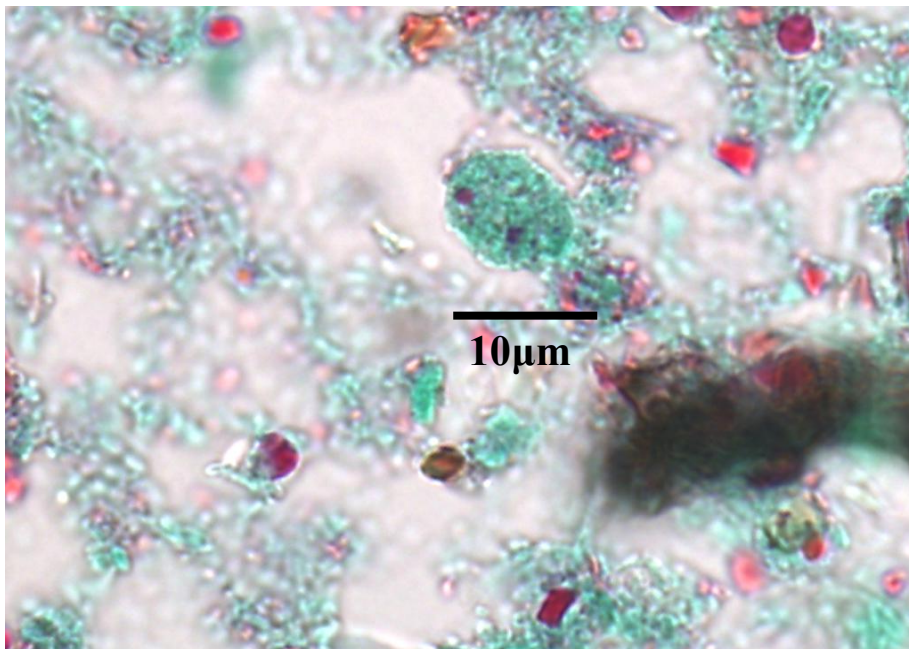
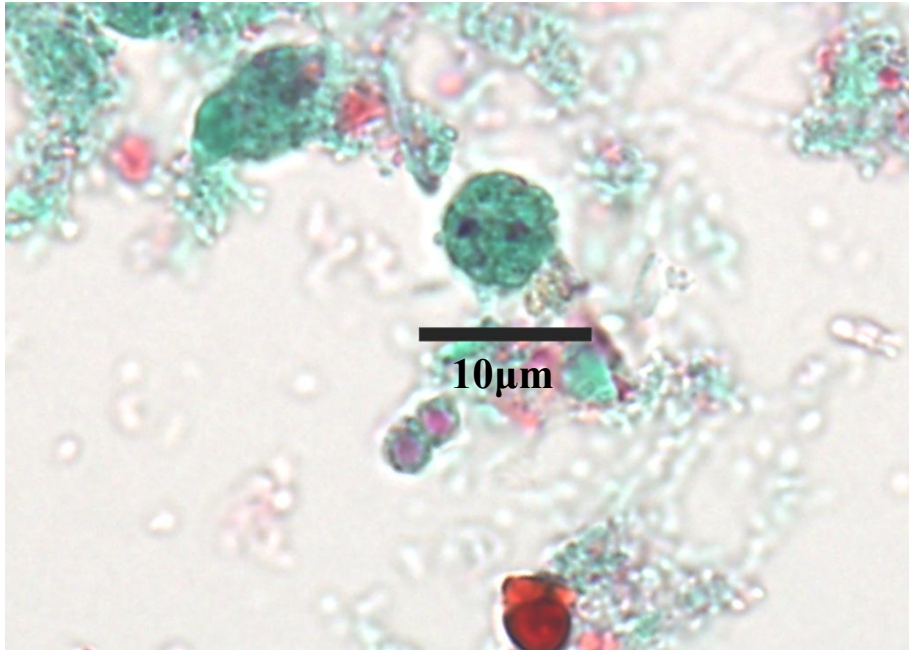
大腸纖毛蟲-囊體

(Balantidium coli) –Cyst



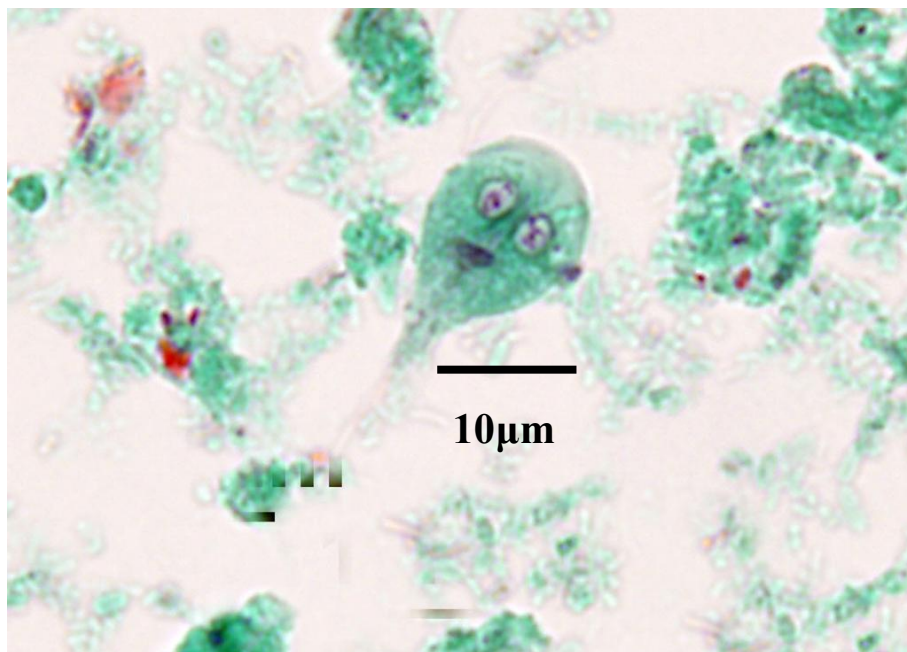
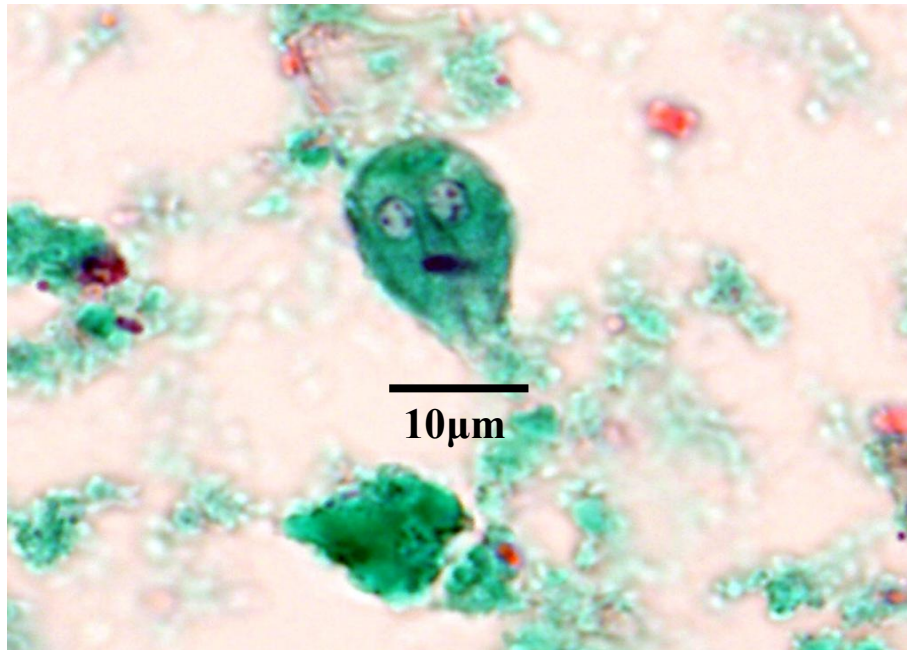
雙核阿米巴-滋養體

(Dientamoeba fragilis) – Trophozoite



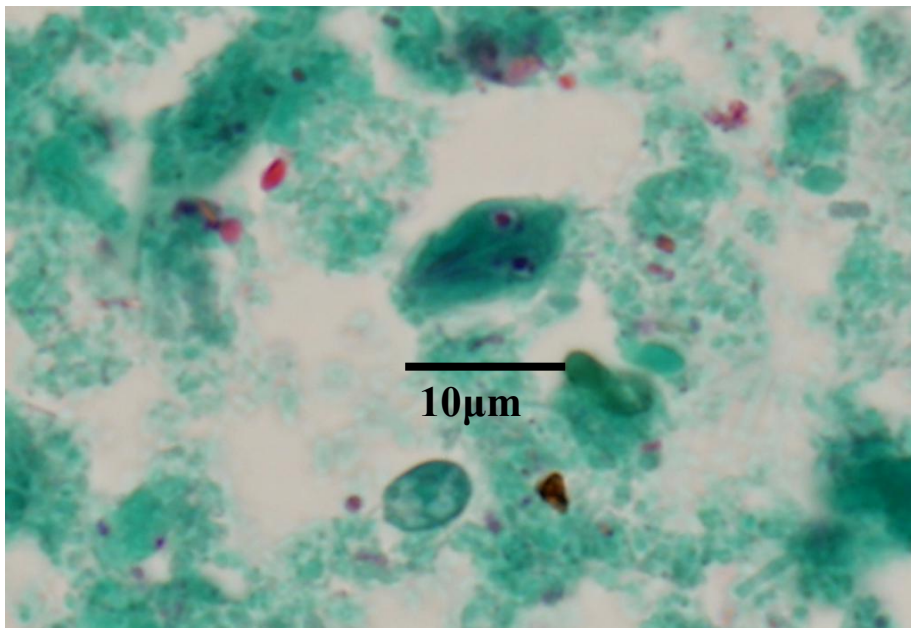
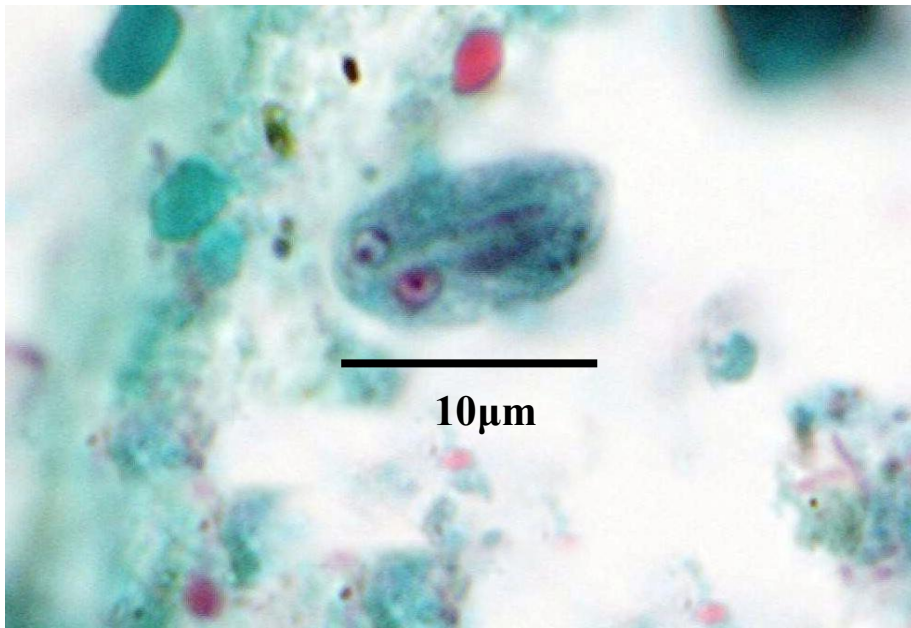
梨形鞭毛蟲-滋養體

(*Giardia lamblia*) – Trophozoite



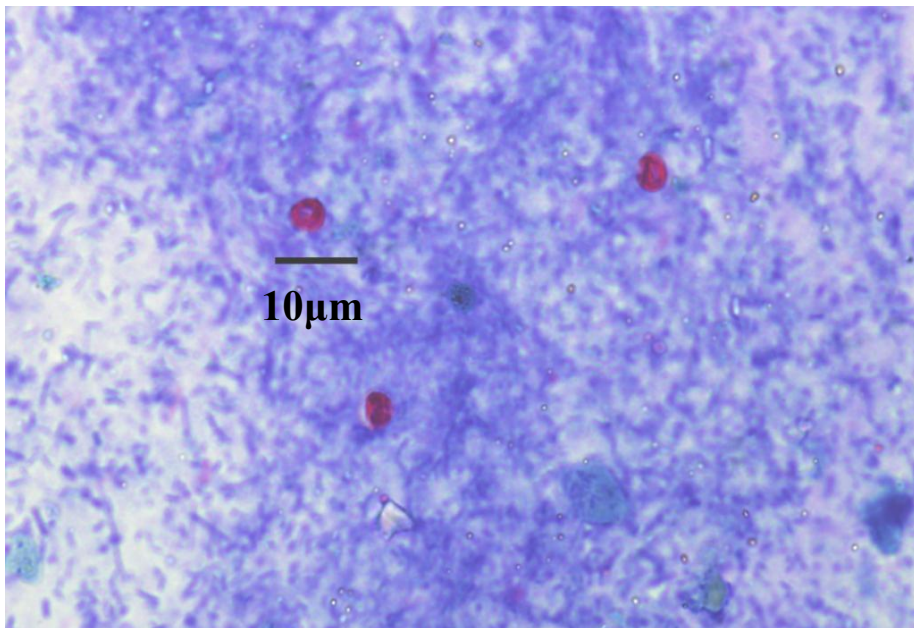
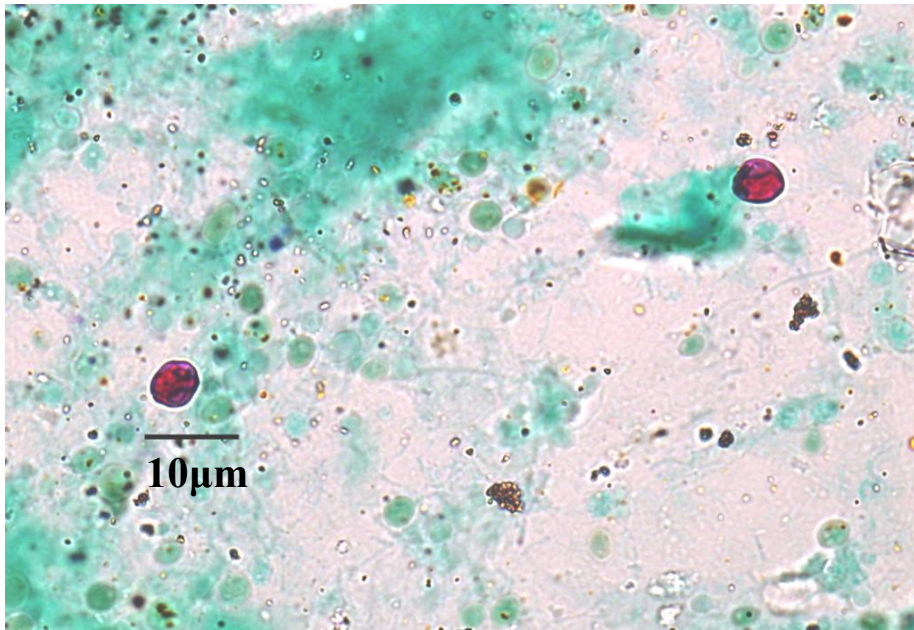
梨形鞭毛蟲-囊體

(*Giardia lamblia*) –Cyst



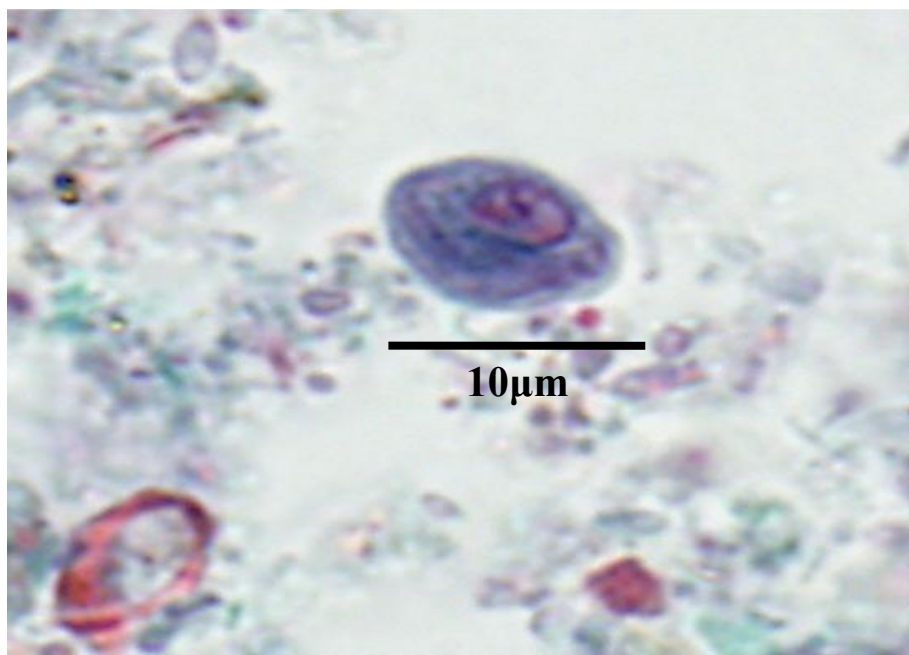
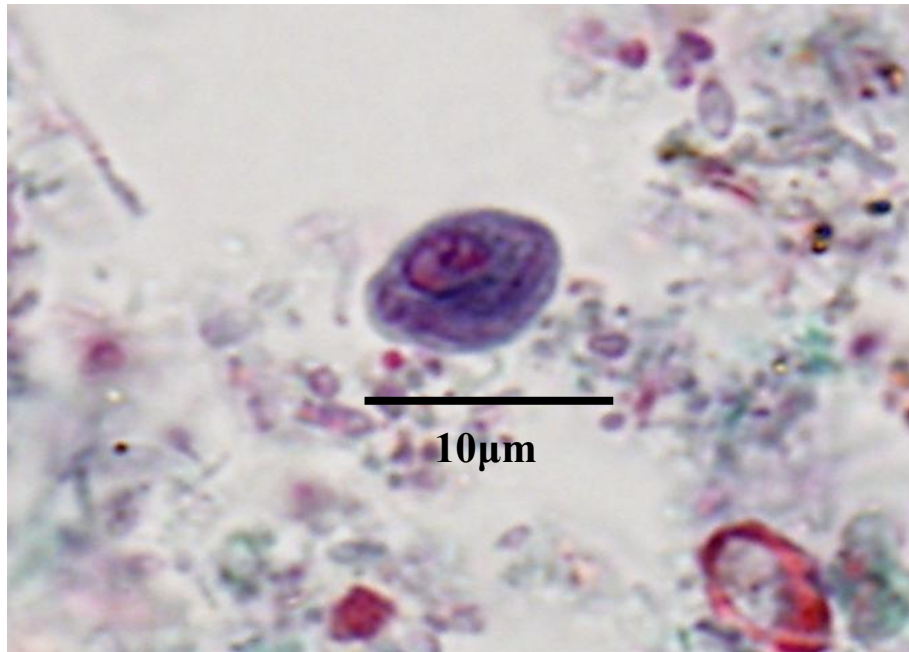
隱孢子蟲-卵囊

(*Cryptosporidium parvum*)-Oocyst



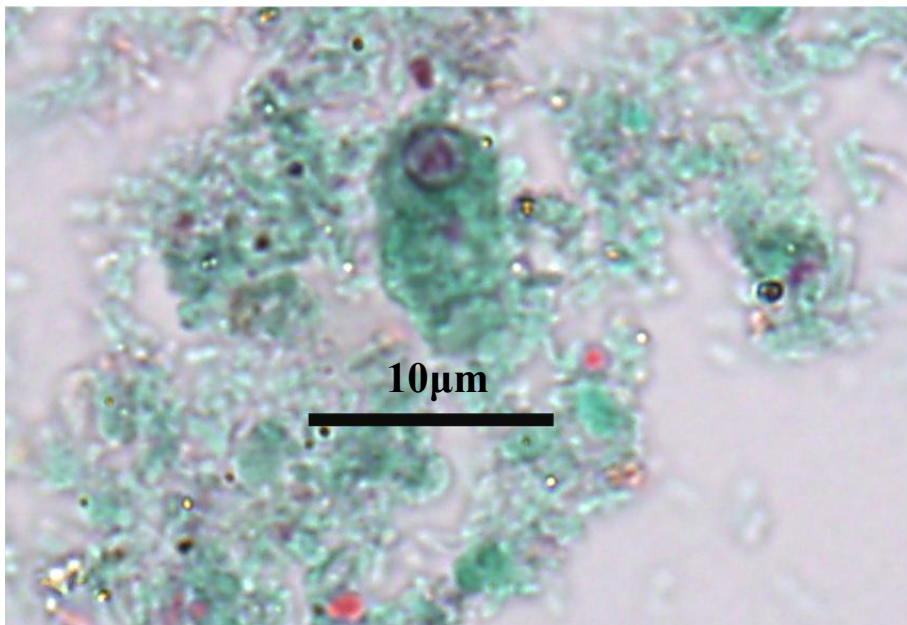
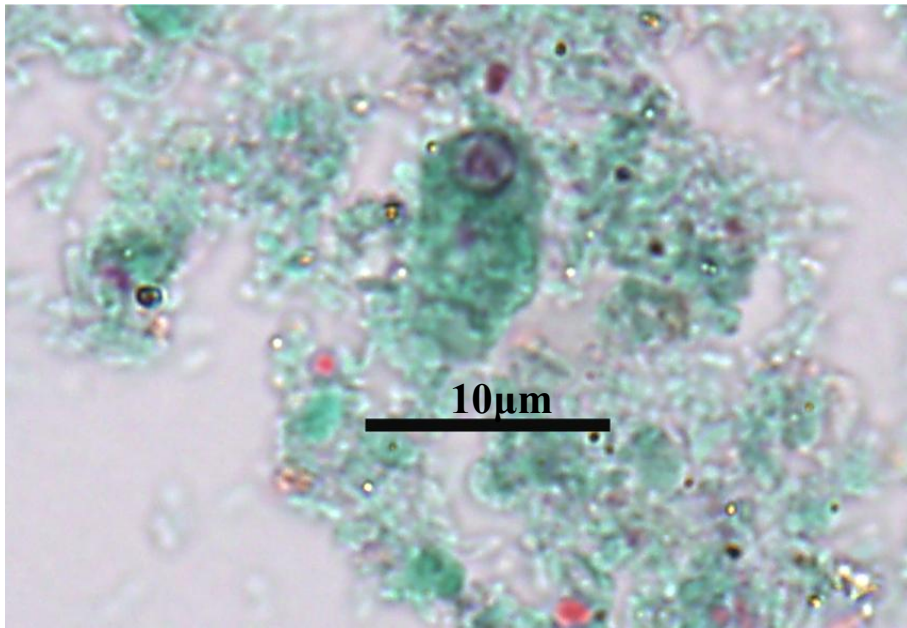
唇形鞭毛蟲-囊體

(*Chilomastix mesnili*) –Cyst



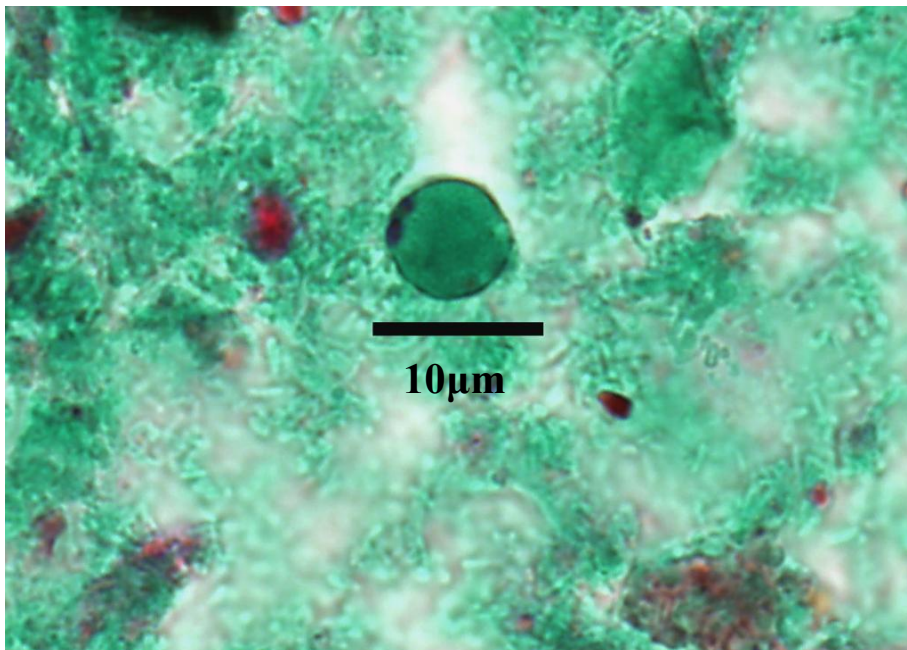
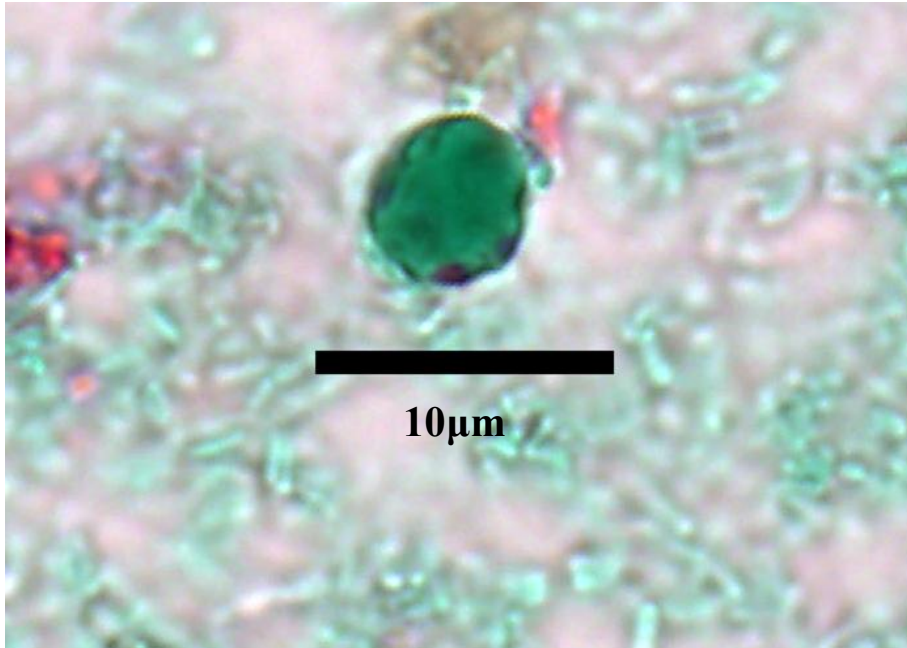
唇形鞭毛蟲-滋養體

(*Chilomastix mesnili*) – Trophozoite



人芽囊原蟲

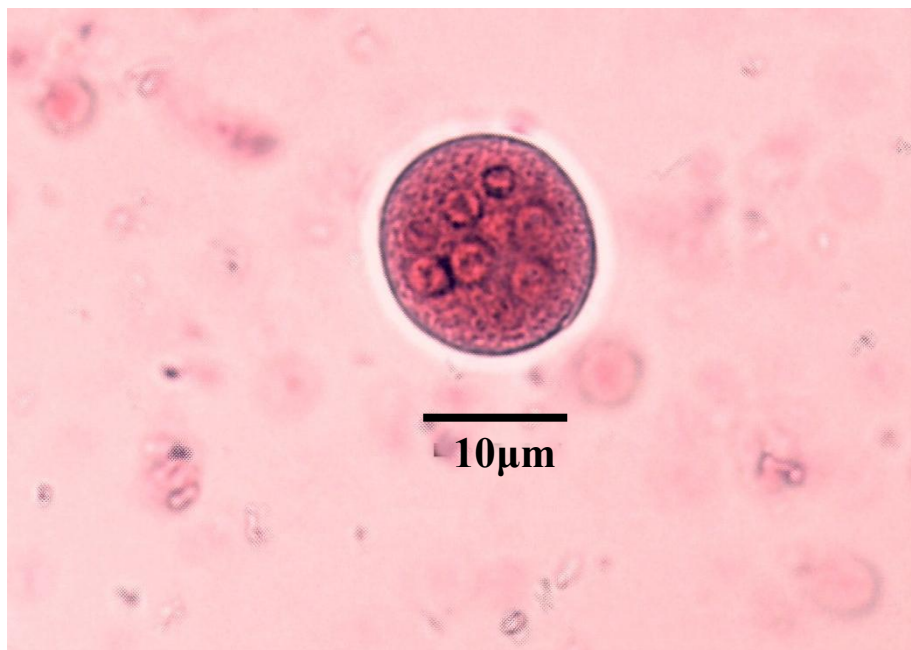
(*Blastocystis hominis*)



大腸阿米巴-囊體

(Entamoeba coli) –Cyst

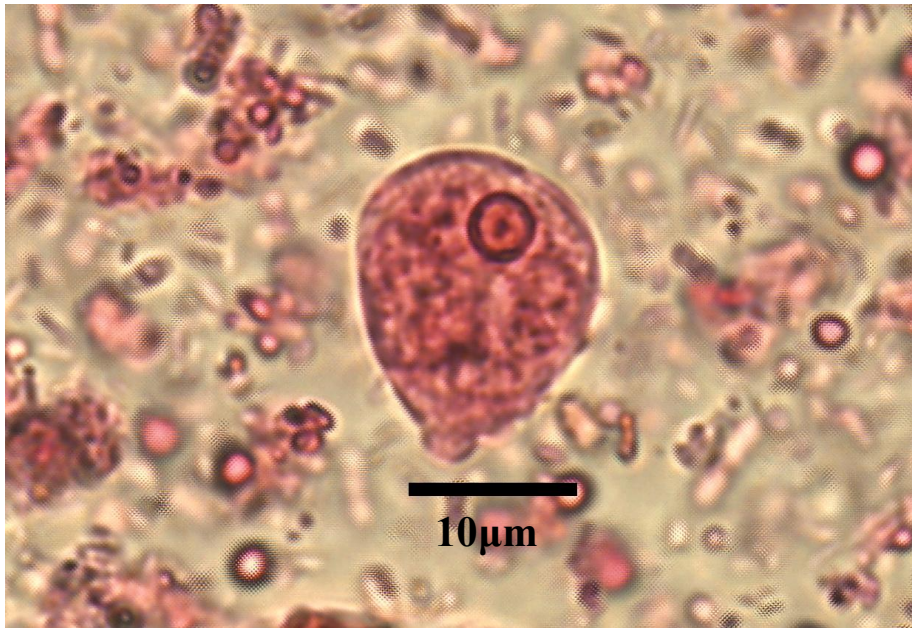
MIF stain (400X)



痢疾阿米巴/迪斯帕阿米巴-滋養體

(*Entamoeba histolytica*/*E. dispar*) – Trophozoite

MIF stain (400X)



痢疾阿米巴/迪斯帕阿米巴-囊體

(Entamoeba histolytica/E. dispar) –Cyst

MIF stain (400X)



痢疾阿米巴/迪斯帕阿米巴-滋養體

(*Entamoeba histolytica*/*E. dispar*) – Trophozoite

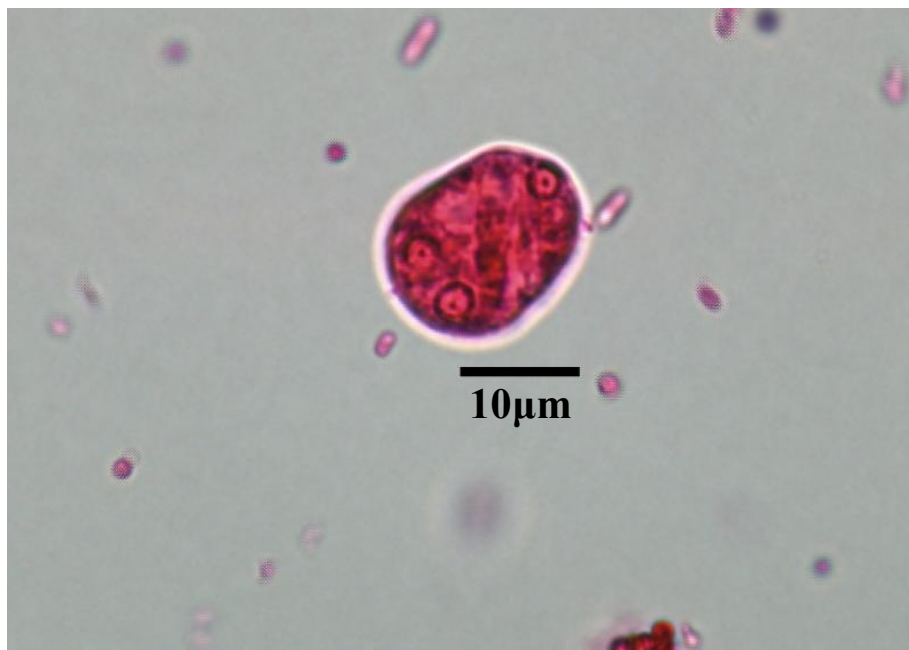
MIF stain (400X)



痢疾阿米巴/迪斯帕阿米巴-囊體

(*Entamoeba histolytica*/*E. dispar*) –Cyst

MIF stain (400X)



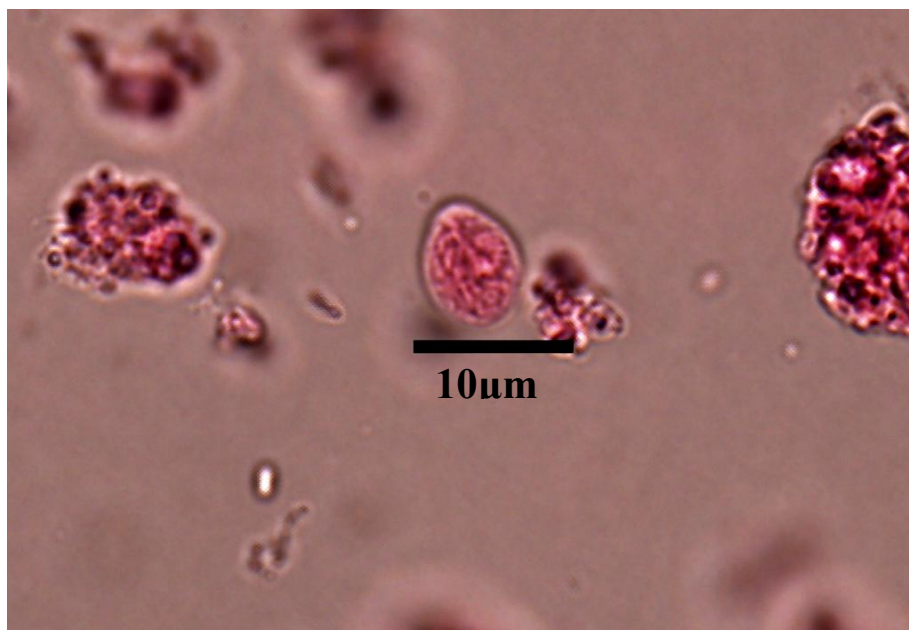
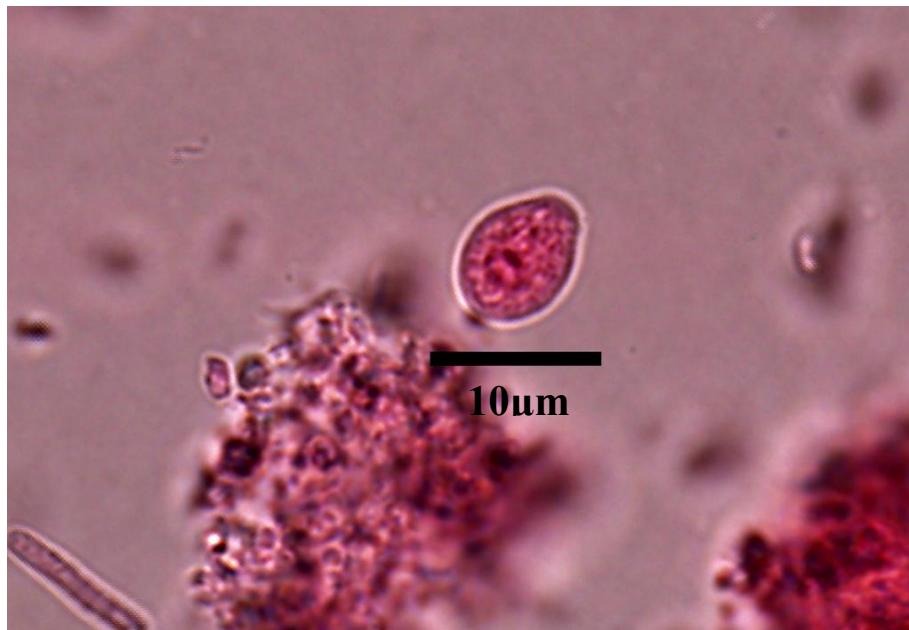
哈氏阿米巴-囊體

(Entamoeba hartmanni) –Cyst

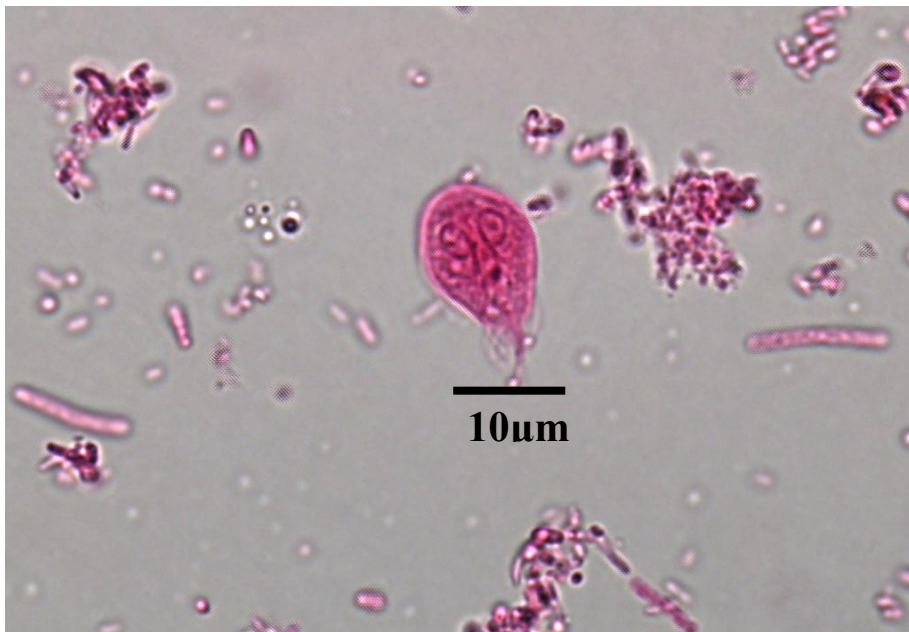
MIF stain (400X)



唇形鞭毛蟲-囊體
(*Chilomastix mesnili*) –Cyst
MIF stain (400X)



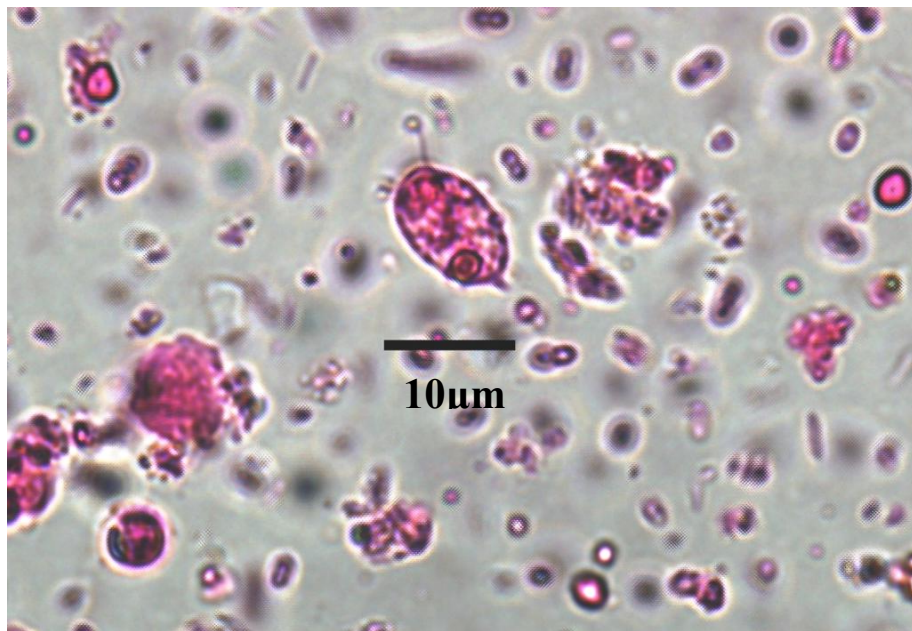
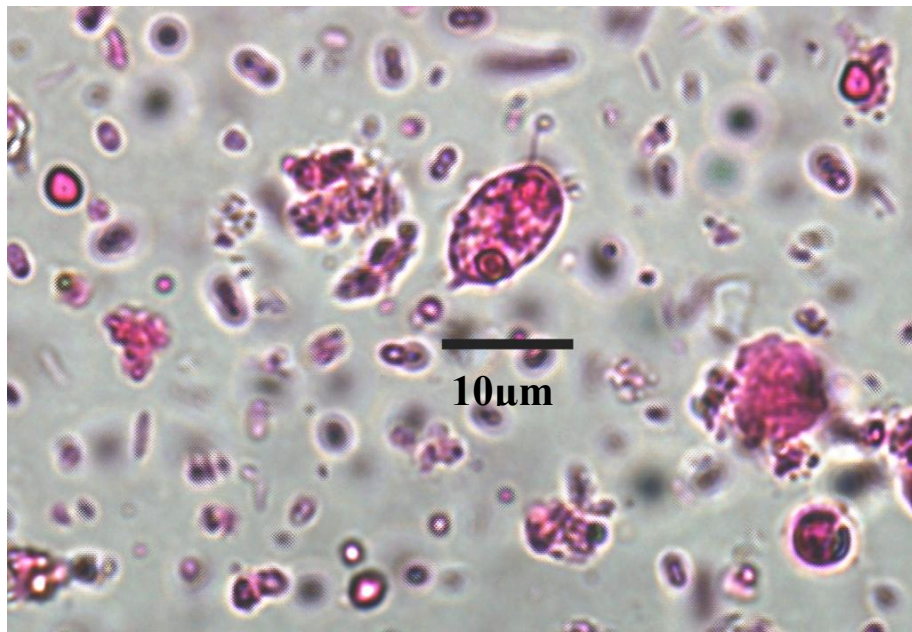
梨形鞭毛蟲-滋養體
(*Giardia lamblia*) – Trophozoite
MIF stain (400X)



唇形鞭毛蟲-滋養體

(*Chilomastix mesnili*) – Trophozoite

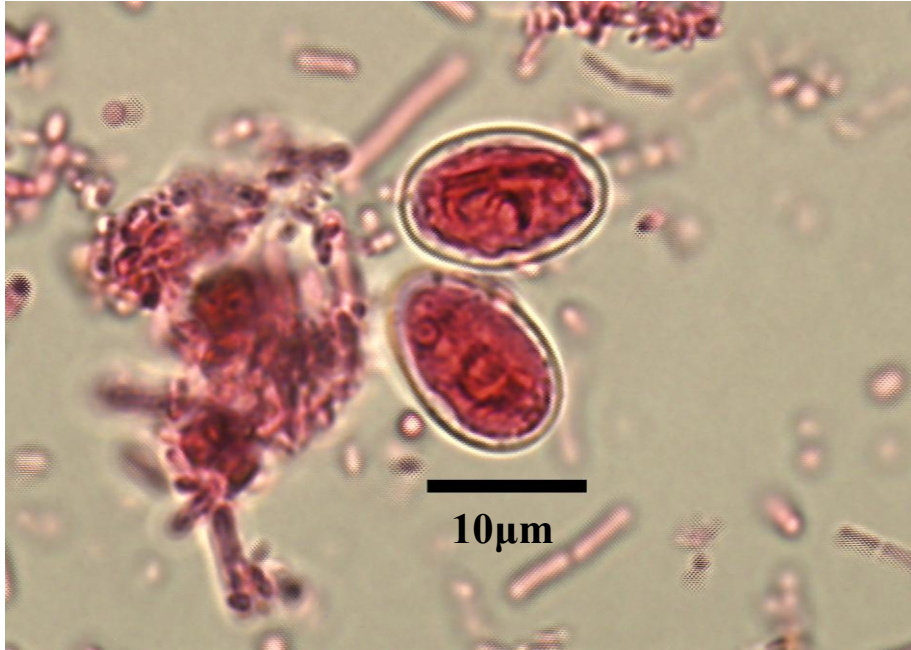
MIF stain (400X)



梨形鞭毛蟲-囊體

(*Giardia lamblia*) –Cyst

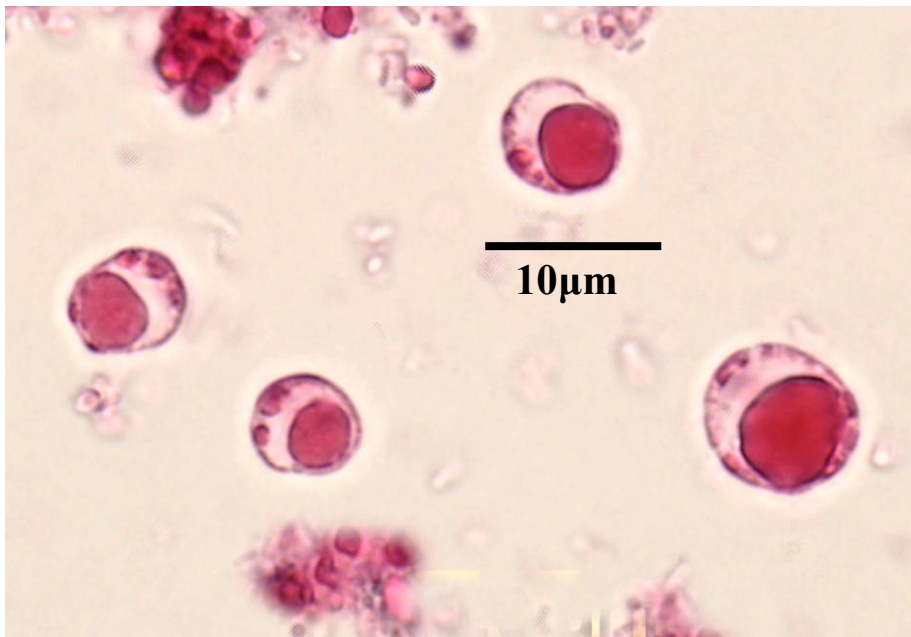
MIF stain (400X)



人芽囊原蟲

(Blastocystis hominis)

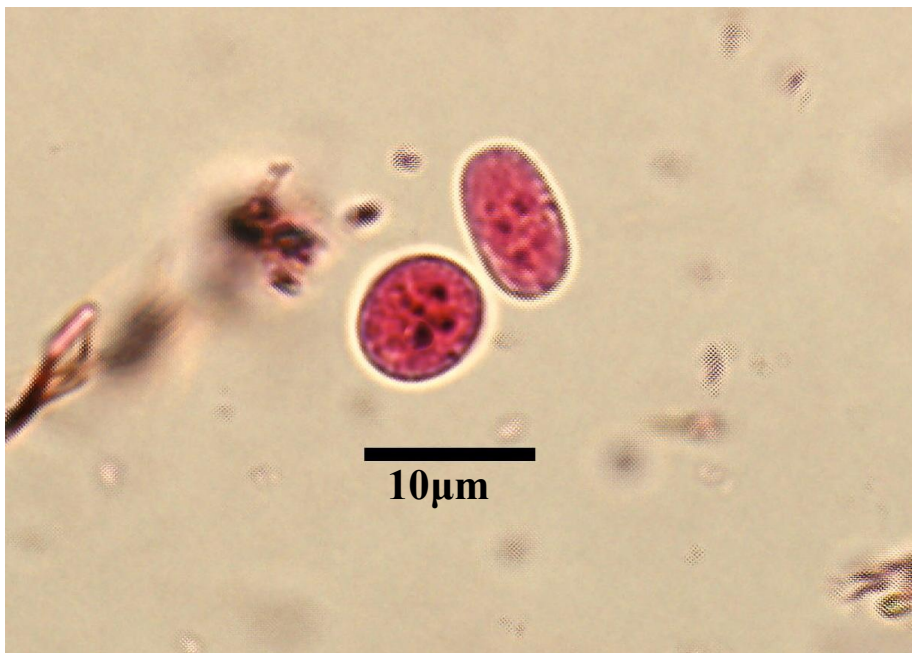
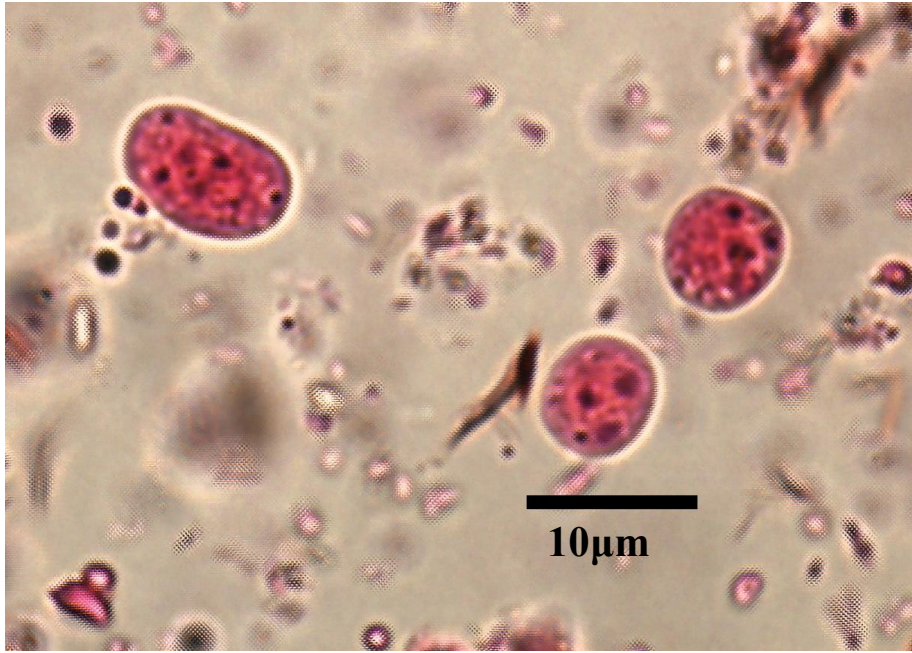
MIF stain (400X)



微小阿米巴-囊體

(*Endolimax nana*) –Cyst

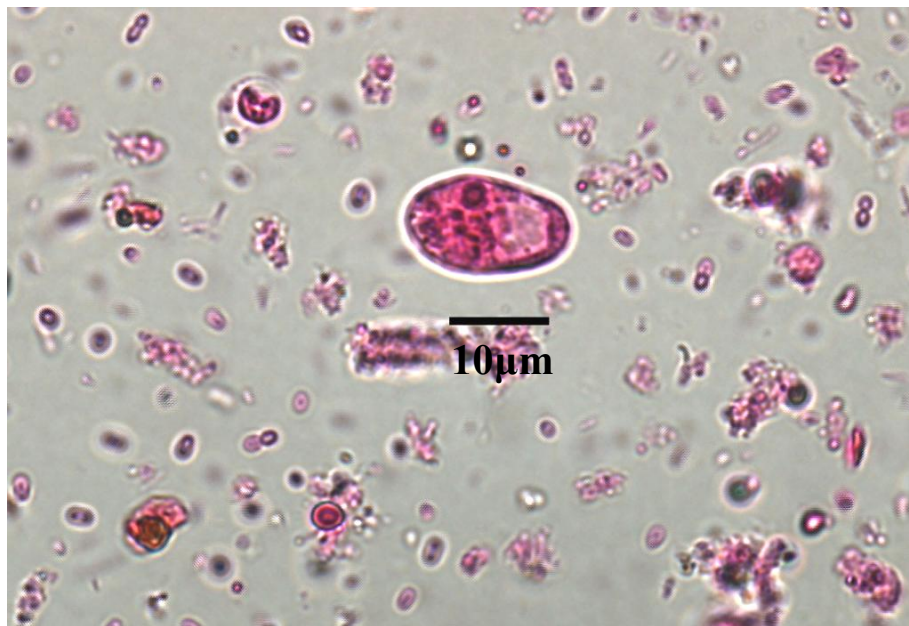
MIF stain (400X)



嗜碘阿米巴-囊體

(*Iodamoeba butschlii*) –Cyst

MIF stain (400X)



痢疾阿米巴/迪斯帕阿米巴-前囊體

(*Entamoeba histolytica*/*E. dispar*) –Precyst

MIF stain (400X)



白血球(WBC)

MIF stain (400X)

