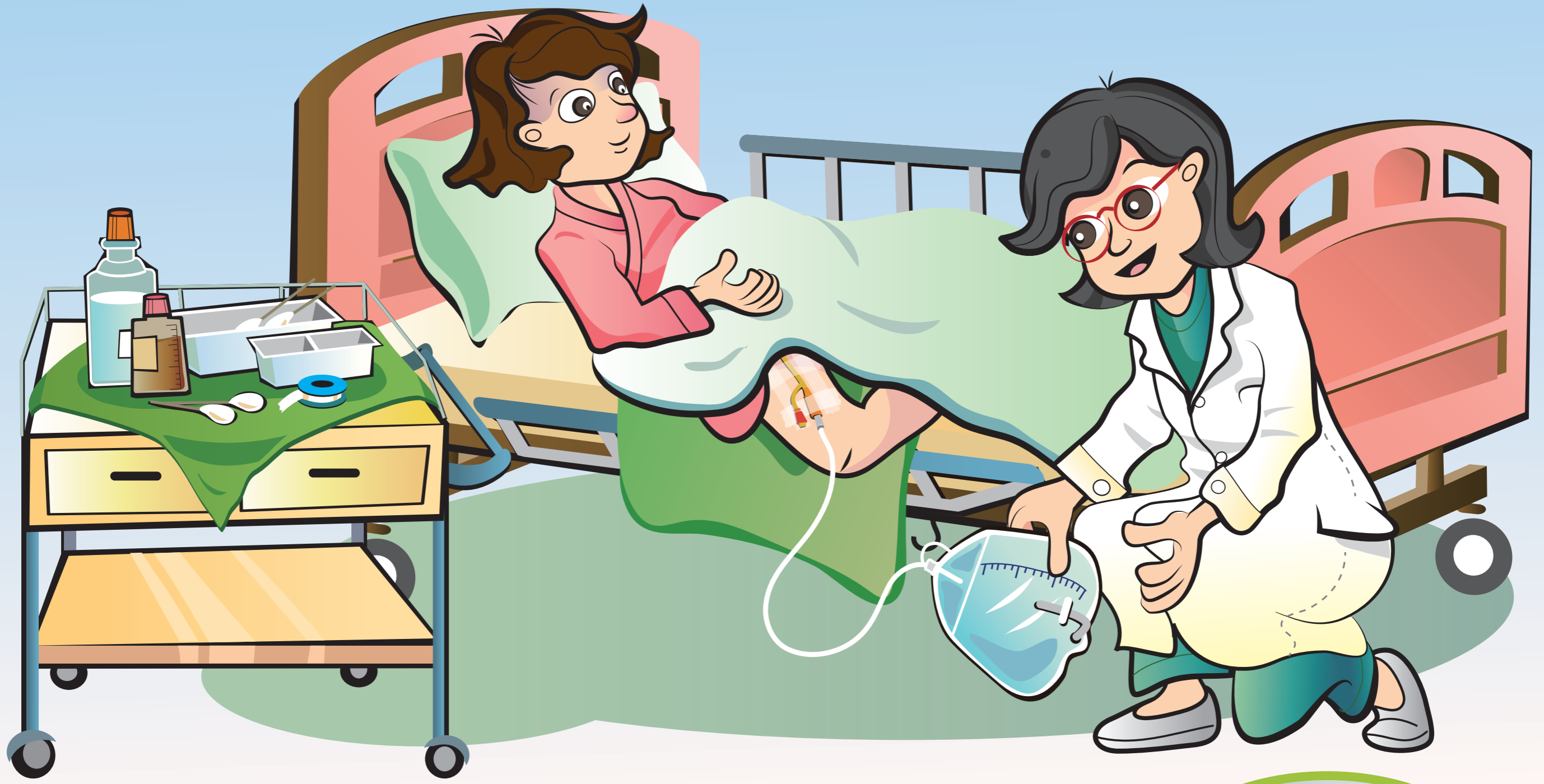


導尿管置放 組合式 照護措施



1. 置放導尿管前，執行手部衛生

Clean hands before insertion

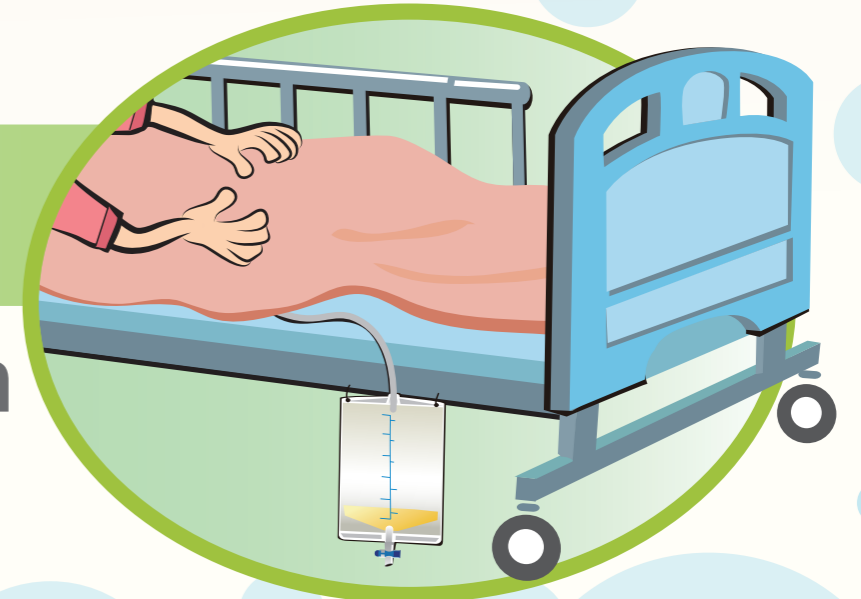


2. 無菌操作技術置放導尿管

Insert urinary catheter using aseptic technique

3. 導尿管固定方式正確

Properly secure catheter after insertion



4. 完成導尿管置放後，立即執行手部衛生

Clean hands after insertion

