



## Summary

During week 7 (February 14–20, 2010), influenza activity unchanged in Taiwan.

- Of the 371 specimens tested during week 5–7, 34 (9%) were positive for influenza viruses, and 31 (8%) were positive for pandemic (H1N1) 2009 viruses; 100% (95% confidence interval 89%–100%) of all subtyped influenza A viruses were pandemic (H1N1) 2009 viruses.
- Since July 1, 2009, there has been 908 reports of complicated pandemic (H1N1) 2009 virus infections (41 deaths). There were 2 new complicated pandemic (H1N1) 2009 influenza cases during week 7.
- The number of deaths mentioning pneumonia and influenza during week 6 was 210, which was below the number for this time of last year (340 deaths).
- The rates of outpatient and emergency room visits for influenza-like illness were considered unchanged compared with the previous week.

## Virologic surveillance

During week 5–7, all (95% confidence interval 89%–100%) subtyped influenza A viruses being reported to Taiwan CDC through contracted laboratories during this period were pandemic (H1N1) 2009 viruses. The results of tests performed during the past 3 weeks are summarized in the table below.

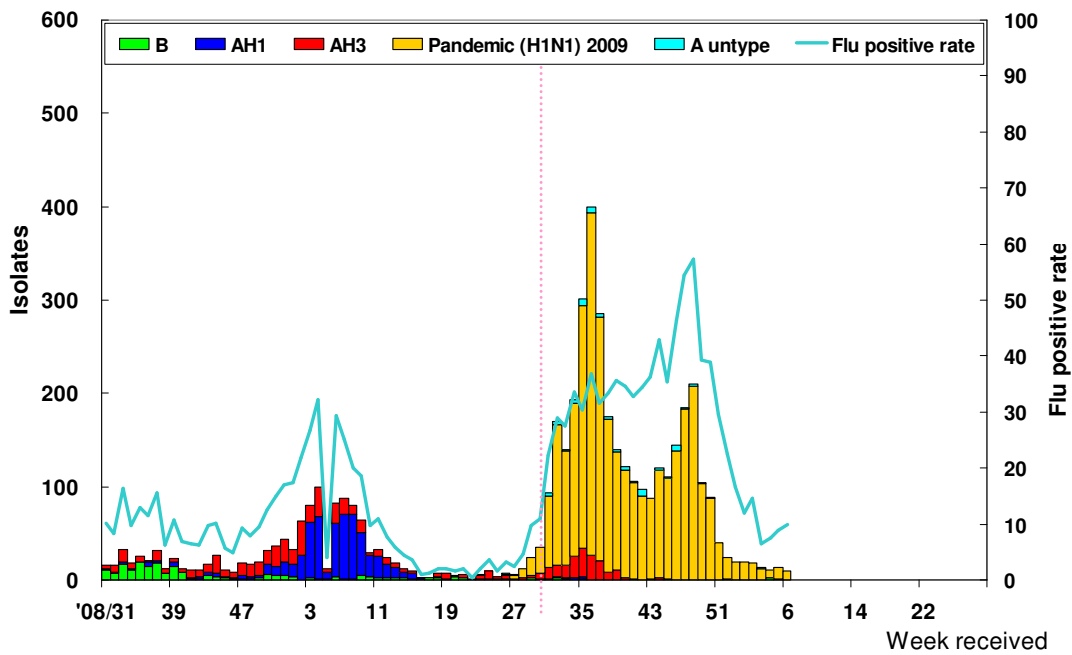
	Data for weeks 5–7	Cumulative data since 6/1/2009
Number of specimens tested	371	12,587
Number of positive specimens (%)	34 (9)	3,544 (28)
Positive specimens by type/subtype (%)		
Influenza A	31 (91)	3,529 (100)
A (pandemic [H1N1] 2009)	31 (100)	3,241 (92)
A (H3)	0 (0)	202 (6)
A (H1)	0 (0)	21 (<1)
A (unable to subtype)	0 (0)	65 (2)
A (subtyping not performed)	0 (0)	0 (0)
Influenza B	3 (9)	15 (<1)

**Antigenic characterization:** Taiwan CDC has antigenically characterized 144 human influenza viruses [1 influenza A (H1), 23 influenza A (H3), 7 influenza B, 113 pandemic (H1N1) 2009] since June 1, 2009.

None of the influenza seasonal A (H1) viruses tested was related to the influenza A (H1N1) component of the 2009–10 influenza vaccine (A/Brisbane/59/2007). Three (13%) of the influenza A (H3N2) viruses tested were related to the A (H3N2) vaccine component (A/Brisbane/10/2007). Four (57%) of the influenza B viruses tested belonged to the B/Victoria lineage and were related to the B component of the 2009–10 influenza vaccine (B/Brisbane/60/2008). All (100%) of the pandemic (H1N1) 2009 viruses tested were related to the A/California/07/2009 vaccine component.



## Influenza positive tests reported to Taiwan CDC by contracted laboratories, 2008–2010



**Antiviral resistance:** Since June 1, 2009, 16 influenza A (H3N2) and 1,158 pandemic (H1N1) 2009 viruses have been tested for resistance to the neuraminidase inhibitors (oseltamivir and zanamivir) and adamantanes (amantadine and rimantadine). The results of antiviral resistance testing performed on these viruses are summarized in the table below.

	Isolates tested (n)	Resistance Viruses, n (%)		Isolates tested (n)	Resistant Viruses, n (%)
		Oseltamivir	Zanamivir		Adamantanes
<b>A (pandemic [H1N1] 2009)</b>	1,158	8 (0.7) <sup>*</sup>	0 (0)	168	168 (100)
<b>A (H3)</b>	16	0 (0)	0 (0)	16	16 (100)

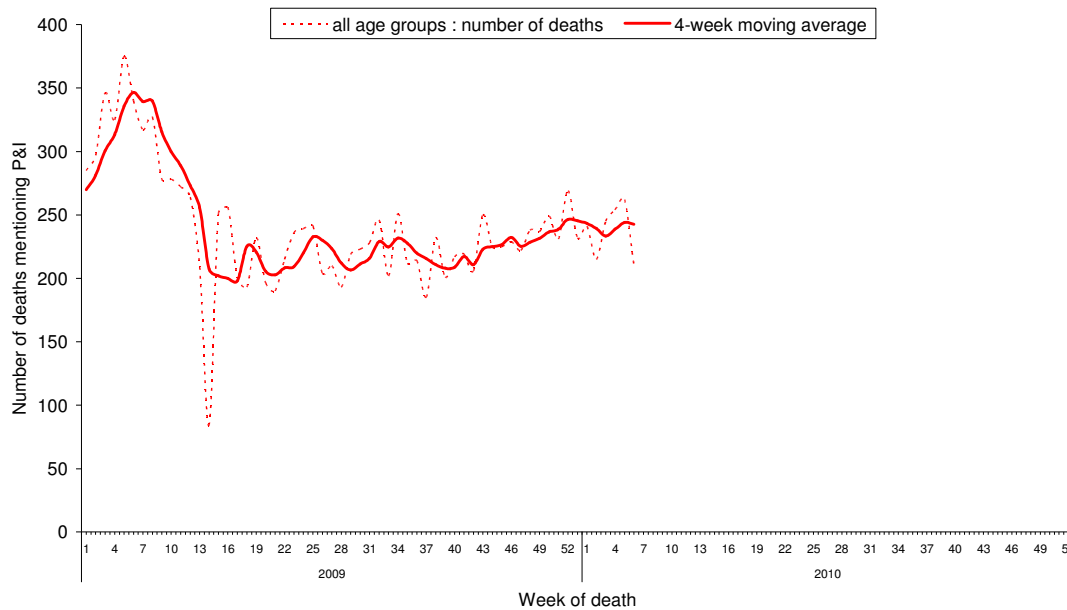
<sup>\*</sup>All patients had documented exposure to oseltamivir through treatment



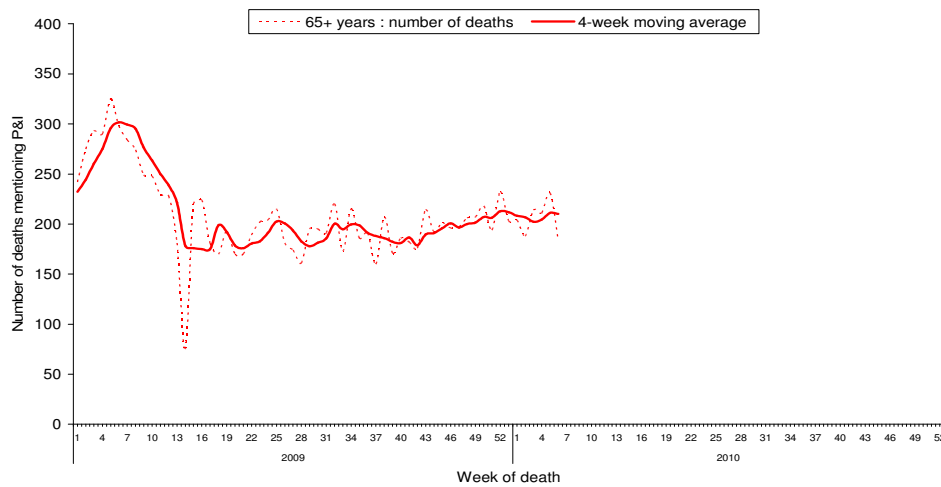
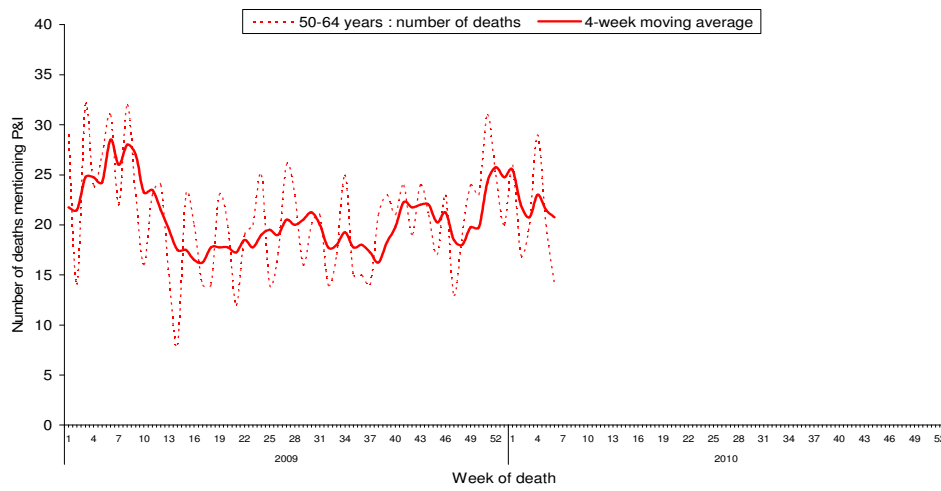
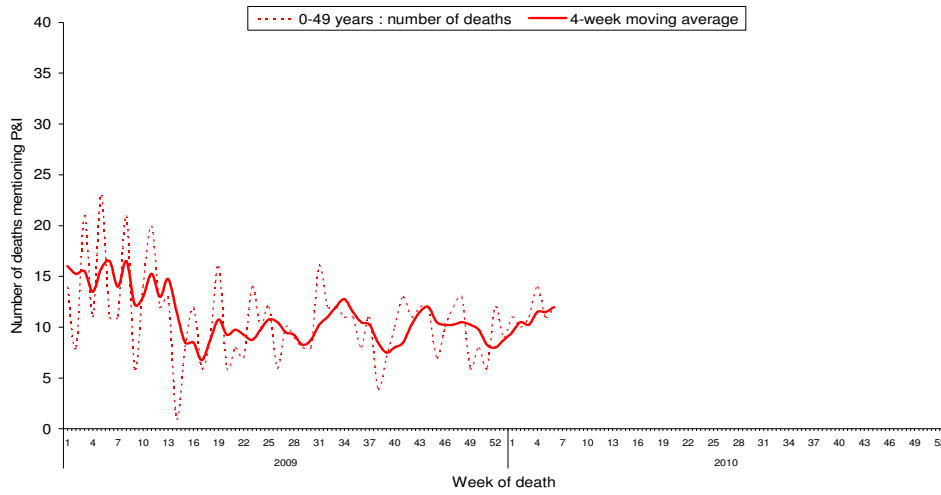
## Pneumonia and influenza (P&I) mortality surveillance

During week 6, 210 deaths reported through the National Death Certificate System mentioned P&I as the cause of death, which was below the number for this time of last year (340 deaths). The number of deaths mentioning P&I for age groups 0–49, 50–64, and greater than 65 years was the highest for adult greater than 65 years of age.

### National pneumonia and influenza mortality Week ending 2/13/2010



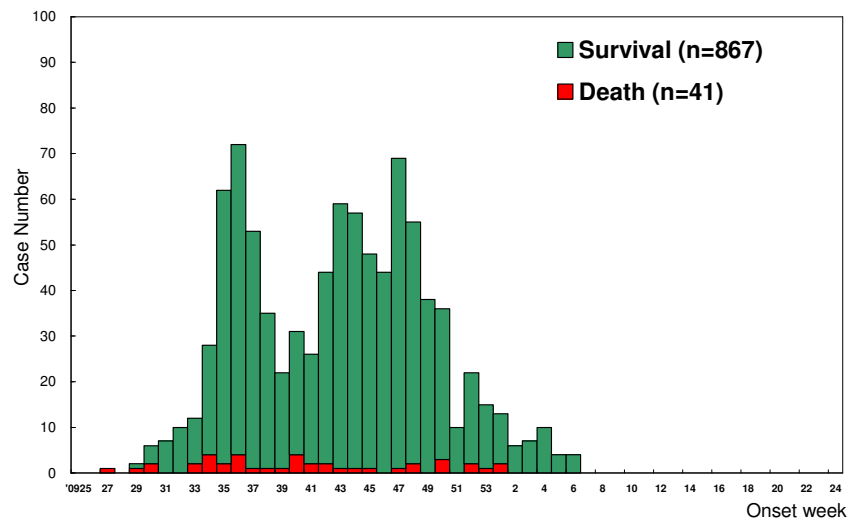
## National pneumonia and influenza mortality by age group Week ending 2/13/2010



## Reports of complicated influenza\*

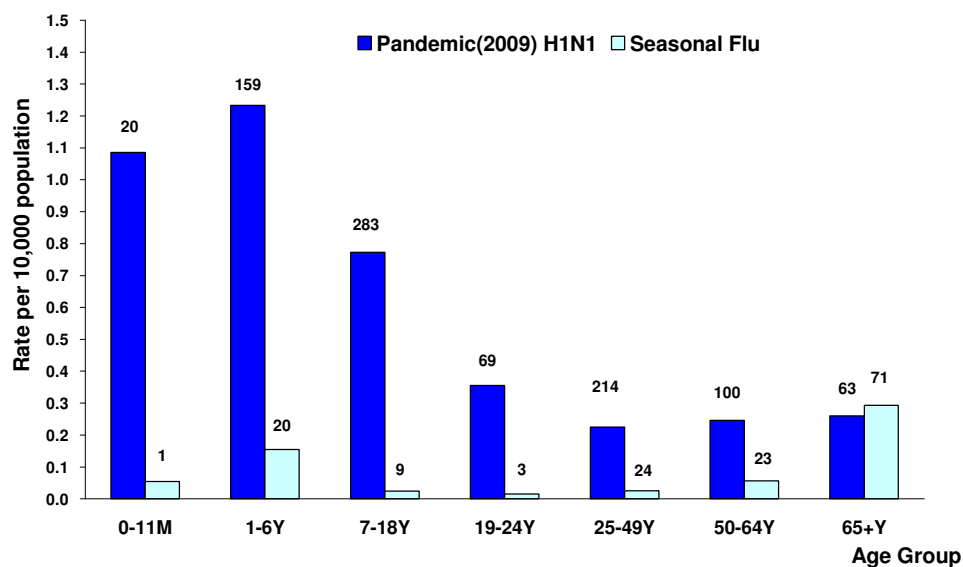
Since July 1, 2009, Taiwan CDC has received 908 reports of complicated pandemic (H1N1) 2009 virus infections (41 deaths). There were 2 new pandemic (H1N1) 2009 influenza cases during week 7.

### Number of complicated pandemic H1N1 influenza reports by week of onset 7/1/2009 to present



\*Defined as pandemic (H1N1) 2009 influenza infection with pulmonary complication, neurologic complication, myocarditis, pericarditis, invasive bacterial infection, or those requiring intensive care or resulting deaths.

### Rate of complicated influenza reports by age groups 7/1/2009 to present



\*Numbers represent number of complicated influenza reports for that specific age stratum.



## Outpatient and emergency room influenza-like illness surveillance

Nationwide during week 7, rates of outpatient and emergency room visits reported through the National Health Insurance Database for influenza-like illness (ILI) have increased compared with the previous week. This could be the result of fewer visits for any illness during the Lunar New Year. The ILI rates were considered unchanged compared with the previous week.

### Rate of outpatient and emergency room (ER) visits for influenza-like illness 6/15/2008 to present

