



Summary : Week 13 (Mar. 23 – Mar. 29, 2014)

Influenza activity reduced gradually in Taiwan during week 13, 2014. Among the circulating viruses in Taiwan, the predominant virus subtypes were influenza A (H1N1) virus and influenza B virus.

- Of the 207 specimens tested during week 11, 2014, 57 (27.5%) were positive for influenza viruses, 9 (15.8%) were positive for influenza A (H3N2) virus, 20 (35.1%) were positive for influenza A (H1N1) virus, and 28 (49.1%) were positive for influenza B virus.
- During week 13, 2014, there were 62 new cases of complicated influenza, including 33 cases with influenza A (H1N1) virus infection, 18 cases with influenza A (H3N2) virus infection, 3 cases due to un-typed influenza A virus infection, 8 cases with influenza B virus infection; 15 reports of death from complicated influenza, including 12 cases with influenza A (H1N1) virus infection and 3 cases with influenza A (H3N2) virus infection. Since July 1, 2013, 1569 cases of complicated influenza infection have been confirmed, including 743 cases from influenza A (H1N1) virus infection, 707 cases from influenza A (H3N2) virus infection, 16 cases due to un-typed influenza A virus infection, 102 cases from influenza B virus infection and 1 case with both A (H1N1) and A (H3N2) viruses infection. 529 cases of complicated influenza infection received the intensive care. Since July 1, 2013, there have been 111 reports of death from complicated influenza infection; 70 cases from influenza A (H1N1) virus infection, 38 cases from influenza A (H3N2) virus infection, 1 case from un-typed influenza A virus infection and 2 cases from influenza B virus infection respectively.
- The proportion of outpatient visits for influenza-like illness (ILI) was 1.54%, which was comparable to the proportion of previous week (1.58%).
- The proportion of emergency room visits for ILI was 12.48%, which was comparable to the proportion of previous week (12.87%).

Virologic surveillance

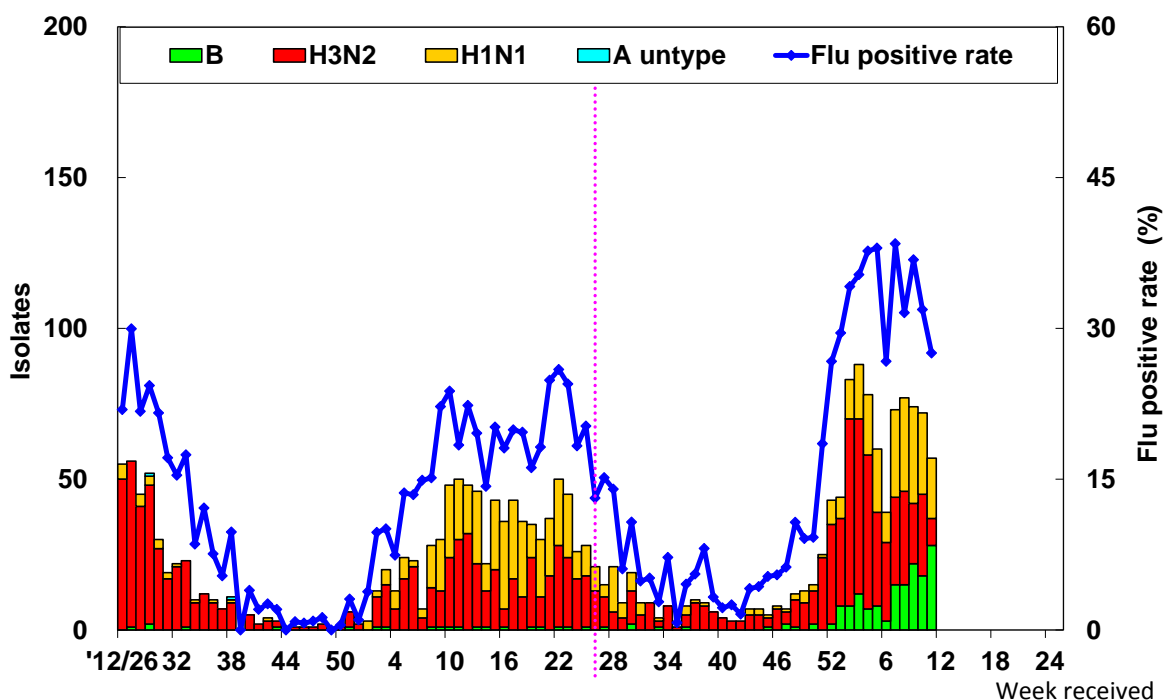
During week 11, 2014, the results of tests performed summarized in the table below.

	Data for week 11, 2014	Cumulative data since 7/1/2013
Number of specimens tested	207	6247
Number of positive specimens (%)	57(27.5)	1046(16.7)
Positive specimens by type/subtype (%)		
Influenza A (% of all positive specimens)	29(50.9)	889(85)
A (H1N1) (% of all Influenza A)	20(69.0)	300(33.7)
A (H3N2)	9(31.0)	589(66.3)
A (unable to subtype)	0(0)	0(0)
A (subtyping not performed)	0(0)	0(0)
Influenza B	28(49.1)	157(15.0)



Antigenic characterization: Taiwan CDC has antigenically characterized 199 human influenza viruses [66 influenza A (H1N1) viruses, 85 influenza A (H3N2) viruses, and 48 influenza B viruses (including 25 B/Victoria-lineage and 23 B/Yamagata-lineage)] since October 1, 2013. 100% (n=66) influenza A (H1N1) viruses tested were related to the A (H1N1) component of the 2013-14 influenza vaccine (A/California/7/2009(H1N1)pdm09). 98% (n=83) of the influenza A (H3N2) viruses tested were related to the A (H3N2) component of the 2013-14 influenza vaccine (A/Victoria/361/2011(H3N2)). 25% (n=12) influenza B virus tested was related to the B component of the 2013-14 trivalent influenza vaccine (B/Massachusetts/2/2012-like(B/Yamagata-lineage virus)).

Influenza positive tests reported to Taiwan CDC by contracted laboratories, 2012–2014



Antiviral resistance: Since October 1, 2013, 21 influenza A (H1N1) viruses, 32 influenza A (H3N2) viruses and 2 influenza B viruses have been tested for resistance to the neuraminidase inhibitors (oseltamivir). The results of antiviral resistance testing performed on these viruses are summarized in the table below.

	Isolates tested (n)	Resistance Viruses, n (%)
		Oseltamivir
Influenza A (H1N1)	21	0
Influenza A (H3N2)	32	0
Influenza B	2	0



Pneumonia and influenza (P&I) mortality surveillance

Since week 8, 2014, the trend of P&I has decreased steadily. The number of deaths related to P&I for adults of 65 or greater is the highest among the three age groups (0–49, 50–64, and 65⁺).

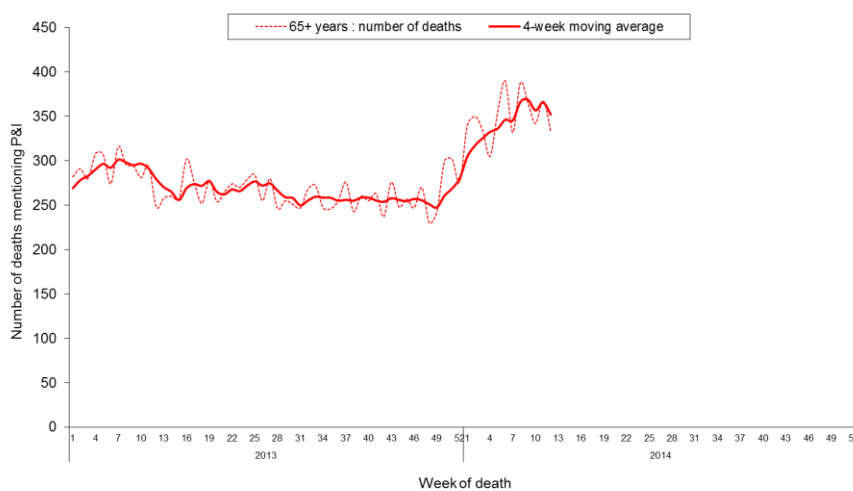
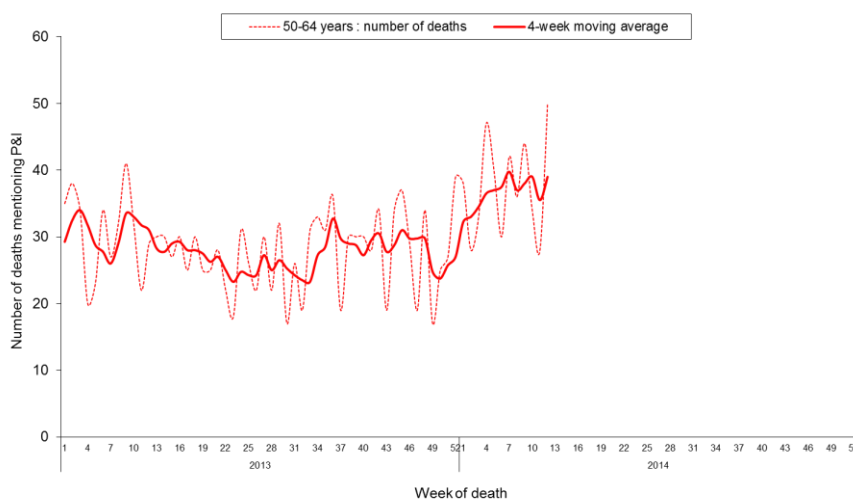
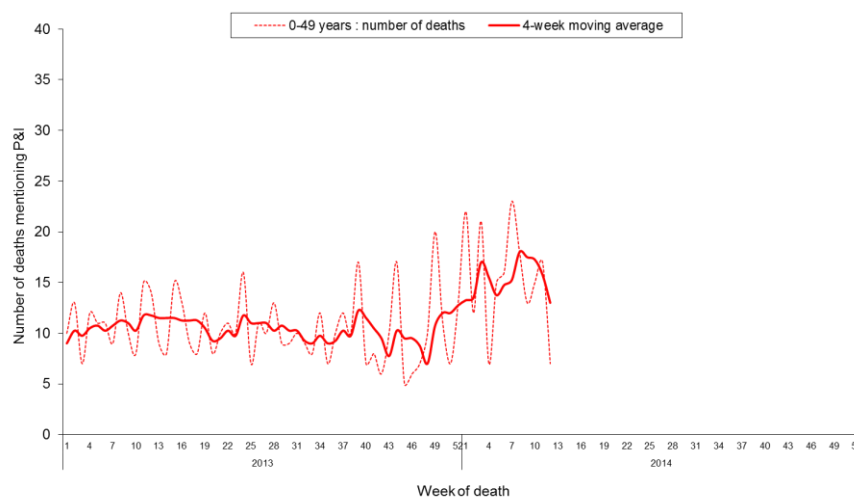
National pneumonia and influenza mortality Week ending at March 22, 2014



* Medical institutions were required to report any mortality case to Ministry of Health and Welfare (MOHW) within 7 days after a death certification is issued through the Internet System for Death Reporting (ISDR). The last field of immediate cause or the underlying cause of death was used to identify P&I death cases. Only those with keywords texts containing 'pneumonia', 'influenza' or 'common cold' were counted as a P&I death. Since January 1, 2014, the ISDR has been improved in coverage.



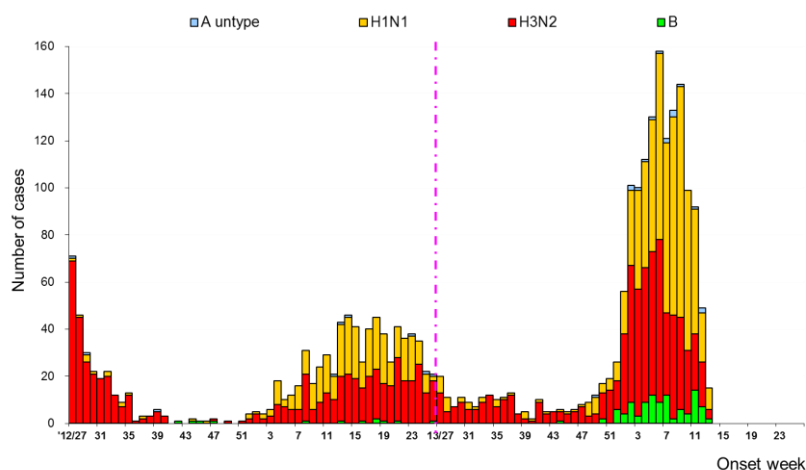
National pneumonia and influenza mortality by age group Week ending at March 22, 2014



Reports of complicated influenza*

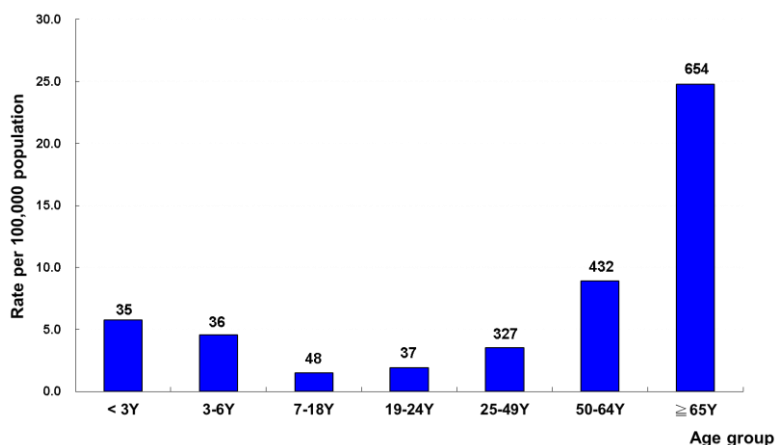
During week 13, 2014, there were 62 new cases of complicated influenza, including 33 cases with influenza A (H1N1) virus infection, 18 cases with influenza A (H3N2) virus infection, 3 cases due to un-typed influenza A virus infection, 8 cases with influenza B virus infection; 15 reports of death from complicated influenza, including 12 cases with influenza A (H1N1) virus infection and 3 cases with influenza A (H3N2) virus infection. Since July 1, 2013, 1569 cases of complicated influenza infection have been confirmed, including 743 cases from influenza A (H1N1) virus infection, 707 cases from influenza A (H3N2) virus infection, 16 cases due to un-typed influenza A virus infection, 102 cases from influenza B virus infection and 1 case with both A (H1N1) and A (H3N2) viruses infection. 529 cases of complicated influenza infection received the intensive care. Since July 1, 2013, there have been 111 reports of death from complicated influenza infection; 70 cases from influenza A (H1N1) virus infection, 38 cases from influenza A (H3N2) virus infection, 1 case from un-typed influenza A virus infection and 2 cases from influenza B virus infection respectively.

Number of complicated influenza reports by week of onset July 1, 2012 to present



*Defined as influenza infection with pulmonary complication, neurologic complication, myocarditis, pericarditis, invasive bacterial infection requiring hospitalization, intensive care or resulting in deaths.

Rate of complicated influenza reports by age groups July 1, 2013 to present



*Numbers represent number of complicated influenza reports for that specific age stratum.



Outpatient and emergency room influenza-like illness surveillance

Nationwide during week 13, 2014, 1.54% of outpatient visits reported through the National Health Insurance Database were due to influenza-like illness (ILI), which was comparable to the proportion of previous week (1.58%).

The proportion of emergency room (ER) visits for ILI was 12.48%, which was comparable to the proportion of previous week (12.87%).

Proportions of outpatient and emergency room (ER) visits for influenza-like illness (July 1, 2012 to present)

