



台灣流感速訊

Taiwan Influenza Express

Taiwan Centers for Disease Control | 2008-2009 Influenza Season | Week 20, May 10 ~ May 16, 2009

Taiwan Influenza Surveillance:

1. The consultation rate for ILI (Influenza-Like Illness) reported by sentinel physicians for the week 20 in 2009 was 4.4% lower than the mean of previous 3 weeks, which was lower compared to the same period in 2007-2008. The percentage rates for the past 4 weeks being 2.43, 2.43, 2.46, and 2.33, respectively, as shown in Fig. 1.
2. Comparing to the mean of previous 3 weeks, the consultation rate increased in 2 regions (Northern, Eastern) and decreased in the rest 4 regions of Taiwan.
3. The dominant influenza virus identified by National Influenza Center and CDC Collaborating Labs in last 6 weeks was type AH3, as shown in Fig. 2.

Conclusion: The influenza surveillance for week 20 indicated that the epidemiological trend in Taiwan was lower than the mean of previous 3 weeks. Influenza AH1 was the dominant viruses in this flu season.

Worldwide Influenza Surveillance:

1. **Asia:** In Hong Kong, the weekly consultation rate for ILI reported by general practitioners for week 19 (2009/5/3-2009/5/9) was 38.2%, which was lower than the previous week and the same period of last year. Since 2009, influenza A was the dominant viruses. In Japan, the number of ILI cases reported by sentinel physicians was 3.23 for week 18-19 (2009/4/27-2009/5/10), which was lower than week 17 but higher than the same period of last year. Influenza A was the dominant viruses in this flu season, but influenza B had been progressively increased.
2. **U.S./Canada:** In USA, during week 18 (2009/5/3-2009/5/9), influenza activity remained at approximately the same level as last week. The proportion of deaths attributed to pneumonia and influenza was below the epidemic threshold. The proportion of outpatient visits for ILI was above the national baseline. Eight states reported widespread activity, 14 states reported regional activity, the District of Columbia and 15 states reported local activity, 13 states reported sporadic influenza activity. The dominant strain in 2008-2009 was influenza A. Since week 17, positive specimens of novel influenza A (H1N1) had been increased. In Canada, during week 18 (2009/5/3-2009/5/9), influenza activity slight increased. The ILI consultation rate was higher than previous week (19 ILI consultations per 1,000 patient visits), which was above the expected range for this week. The sentinel response rate was 61%. Of the influenza detections to date, influenza A was the dominant virus.
3. **Europe:** EISS indicated that in week 19 (2009/5/4-2009/5/10) local influenza activities were reported in Russian Federation, sporadic influenza activities were reported in 12 countries and 3 regions, with no activity or no report in the rest countries. The dominant strain in 2008-2009 was influenza A.
4. **WHO Flu-net:** Global flu surveillance showed that in week 19 (accessed on May 25, 2009) there were regional outbreak in Mexico and USA, local outbreak in New Zealand and South Africa, sporadic outbreaks in Brazil, Argentina, Australia, Poland, Russian Federation, Latvia, Uruguay, Estonia, Kenya, Italy, Mongolia, Israel and China; the rest areas were no activity or no report.

Conclusion: The ILI consultation rate was on the rise in the US and Canada, while there were breakouts of novel influenza A (H1N1) infections in many parts of the world.

Global Distribution of Influenza by WHO FLU-NET

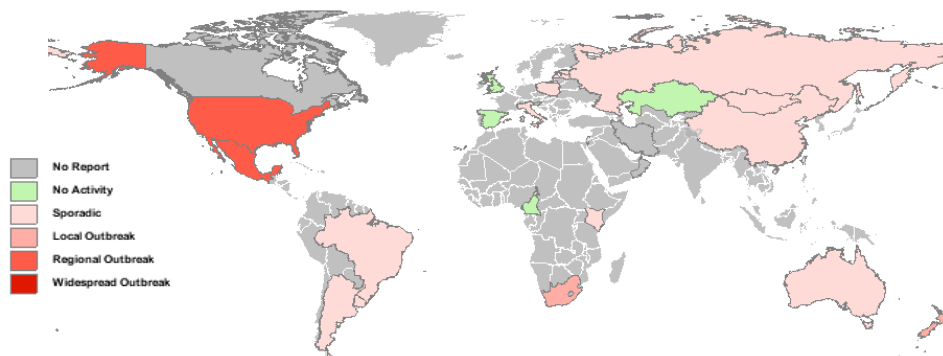
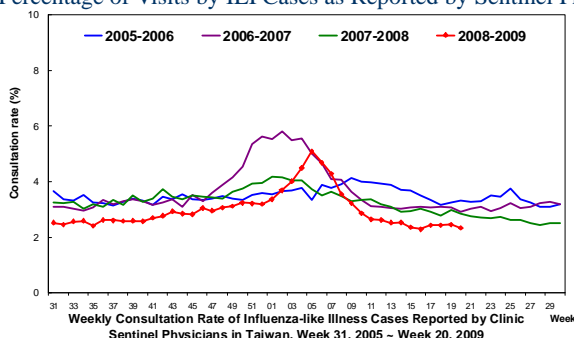


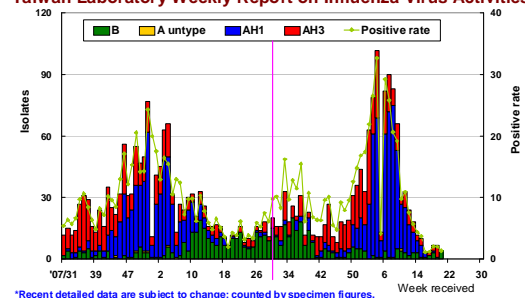
Fig.1 Percentage of Visits by ILI Cases as Reported by Sentinel Physicians



Detailed data are subject to change

Fig2. Laboratory Summary

Taiwan Laboratory Weekly Report on Influenza Virus Activities



*Recent detailed data are subject to change; counted by specimen figures.

References:

Global epidemiological situation of influenza: WHO Flu-net, USA-CDC, CANADA-PHAC, EUROPE-EISS, JAPAN-IASR, HK DOH.

Taiwan epidemiological situation of ILI: Taiwan CDC. For more info, surf <http://www.cdc.gov.tw> or <http://flu.cdc.gov.tw>

The *Influenza Express* published weekly by Taiwan CDC informs you of the latest information on local and global influenza activities.