

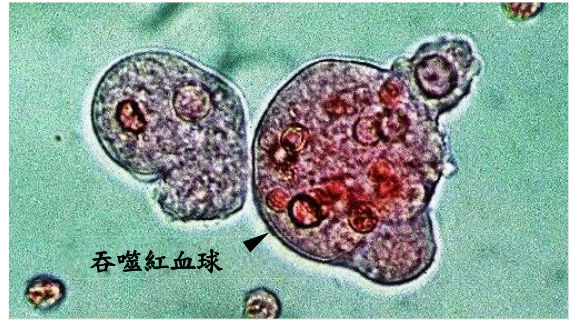


人體腸道原蟲圖譜①

MIF stain (1000X)



痢疾阿米巴/迪斯帕阿米巴-囊體
(*Entamoeba histolytica*/*E. dispar* - Cyst)



痢疾阿米巴-活動體
(*Entamoeba histolytica* - Trophozoites)



大腸阿米巴-囊體
(*Entamoeba coli* - Cyst)



大腸阿米巴-活動體
(*Entamoeba coli* - Trophozoite)



哈氏阿米巴-囊體
(*Entamoeba hartmanni* - Cyst)



哈氏阿米巴-活動體
(*E. hartmanni* - Trophozoite)



人體腸道原蟲圖譜②

MIF stain (1000X)



痢疾阿米巴/迪斯帕阿米巴-囊體
(*Entamoeba histolytica*/*E. dispar* - Cyst)



痢疾阿米巴/迪斯帕阿米巴-前囊體
(*E. histolytica*/*E. dispar* - Precyst)



痢疾阿米巴/迪斯帕阿米巴-囊體
(*E. histolytica*/*E. dispar* - Cyst)



痢疾阿米巴/迪斯帕阿米巴-活動體
(*E. histolytica*/*E. dispar* - Trophozoite)



痢疾阿米巴/迪斯帕阿米巴-活動體
(*E. histolytica*/*E. dispar* - Trophozoite)



痢疾阿米巴/迪斯帕阿米巴-囊體
(*E. histolytica*/*E. dispar* - Cyst)



人體腸道原蟲圖譜③

MIF stain (1000X)



嗜碘阿米巴-囊體
(*Iodamoeba buetschlii* - Cyst)



嗜碘阿米巴-囊體
(*I. buetschlii* - Cyst)



微小阿米巴-囊體
(*Endolimax nana* - Cyst)



微小阿米巴-囊體
(*E. nana* - Cyst)



痢疾阿米巴/迪斯帕阿米巴-活動體
(*Entamoeba histolytica*/ *E. dispar* - Trophozoite)



痢疾阿米巴/迪斯帕阿米巴-囊體
(*E. histolytica*/ *E. dispar* - Cyst)



人體腸道原蟲圖譜④

MIF stain (1000X)



梨形鞭毛蟲-囊體
(*Giardia lamblia* - Cyst)



梨形鞭毛蟲-活動體
(*G. lamblia* - Trophozoite)



唇形鞭毛蟲-囊體
(*Chilomastix mesnili* - Cyst)



唇形鞭毛蟲-活動體
(*C. mesnili* - Trophozoite)



人芽囊原蟲
(*Blastocystis hominis*)



人芽囊原蟲
(*B. hominis*)



人體腸道原蟲圖譜⑤

MIF stain (1000X)



梨形鞭毛蟲-活動體
(*Giardia lamblia* - Trophozoites)



梨形鞭毛蟲-囊體
(*G. lamblia* - Cyst)



痢疾阿米巴/迪斯帕阿米巴-囊體
(*Entamoeba histolytica*/ *E. dispar* - Cyst)



大腸阿米巴-囊體
(*Entamoeba coli* - Cyst)



痢疾阿米巴/迪斯帕阿米巴-囊體
(*E. histolytica*/ *E. dispar* - Cyst)



痢疾阿米巴/迪斯帕阿米巴-前囊體
(*E. histolytica*/ *E. dispar* - Precyst)



人體腸道原蟲圖譜⑥

MIF stain (1000X)

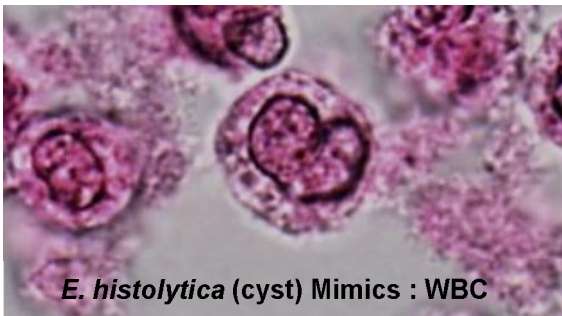


痢疾阿米巴/迪斯帕阿米巴-囊體
(*Entamoeba histolytica*/*E. dispar* - Cyst)



E. histolytica (cyst) Mimics : WBC

白血球
(White Blood Cells)



E. histolytica (cyst) Mimics : WBC

白血球
(White Blood Cells)



痢疾阿米巴/迪斯帕阿米巴-囊體
(*E. histolytica*/*E. dispar* - Cyst)



痢疾阿米巴/迪斯帕阿米巴-囊體
(*E. histolytica*/*E. dispar* - Cyst)

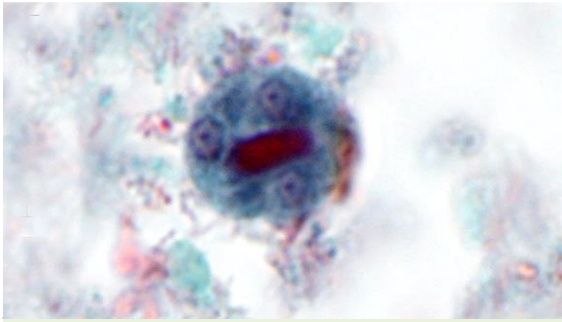


痢疾阿米巴/迪斯帕阿米巴-囊體
(*E. histolytica*/*E. dispar* - Cyst)

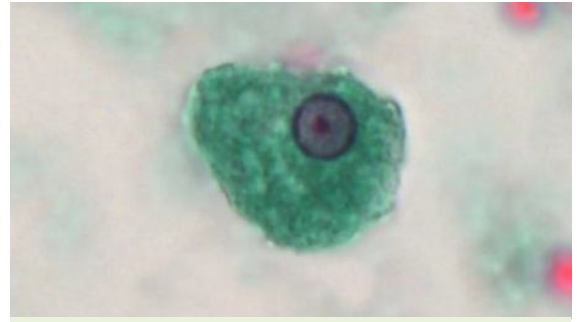


人體腸道原蟲圖譜①

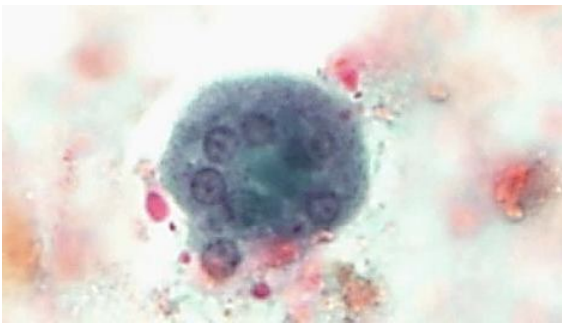
Trichrome stain (1000X)



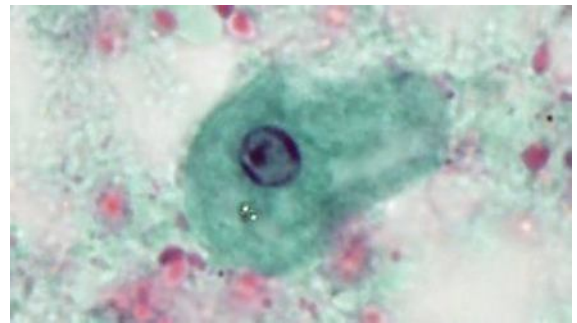
痢疾阿米巴/迪斯帕阿米巴-囊體
(*Entamoeba histolytica*/*E. dispar* - Cyst)



痢疾阿米巴/迪斯帕阿米巴-活動體
(*E. histolytica*/*E. dispar* - Trophozoite)



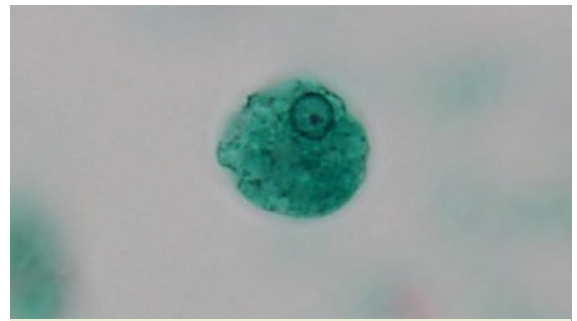
大腸阿米巴-囊體
(*Entamoeba coli* - Cyst)



大腸阿米巴-活動體
(*Entamoeba coli* - Trophozoite)



哈氏阿米巴-囊體
(*Entamoeba hartmanni* - Cyst)

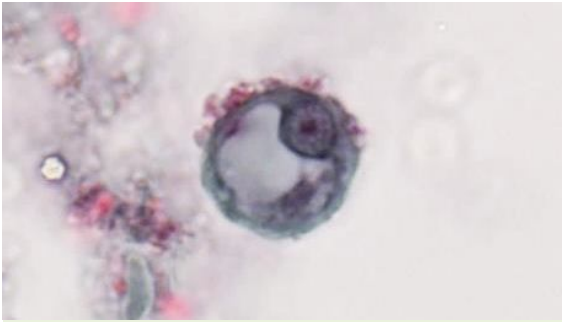


哈氏阿米巴-活動體
(*E. hartmanni* - Trophozoite)



人體腸道原蟲圖譜②

Trichrome stain (1000X)



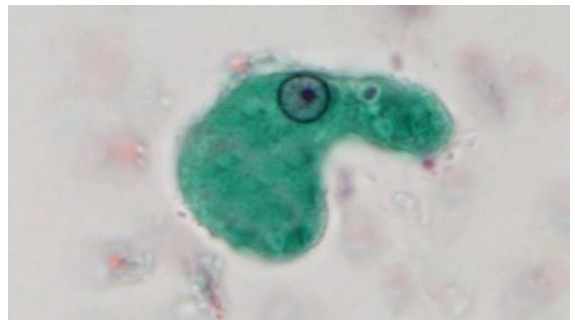
痢疾阿米巴/迪斯帕阿米巴-前囊體
(*Entamoeba histolytica*/*E. dispar* - Precyst)



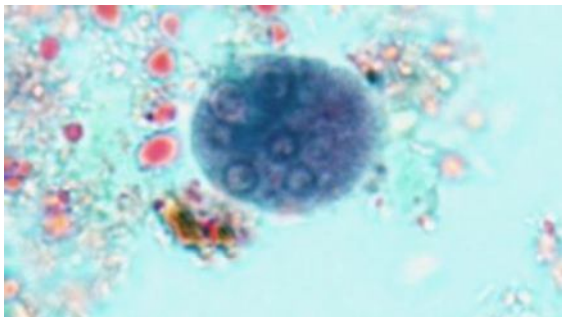
痢疾阿米巴/迪斯帕阿米巴-活動體+囊體
(*E. histolytica*/*E. dispar* - Trophozoite + Cyst)



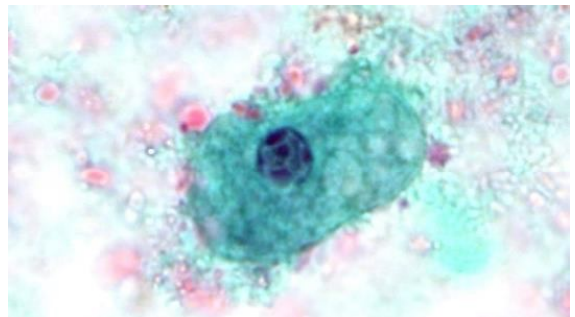
痢疾阿米巴/迪斯帕阿米巴-囊體
(*E. histolytica*/*E. dispar* - Cyst)



痢疾阿米巴/迪斯帕阿米巴-活動體
(*E. histolytica*/*E. dispar* - Trophozoite)



大腸阿米巴-囊體
(*Entamoeba coli* - Cyst)

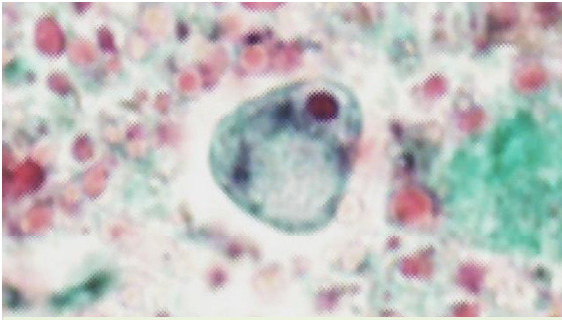


大腸阿米巴-活動體
(*Entamoeba coli* - Trophozoite)

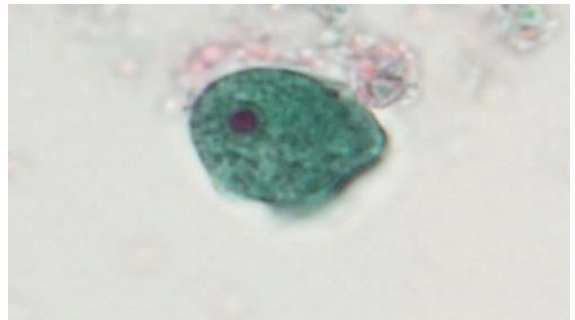


人體腸道原蟲圖譜③

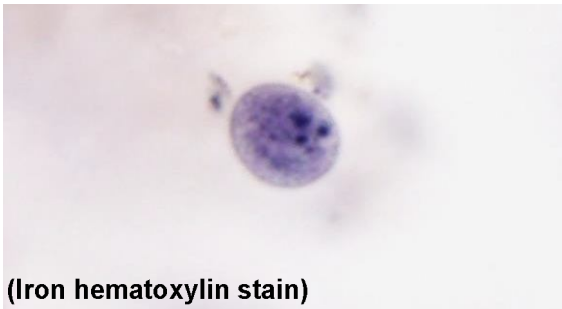
Trichrome stain (1000X)



嗜碘阿米巴-囊體
(*Iodamoeba buetschlii* - Cyst)

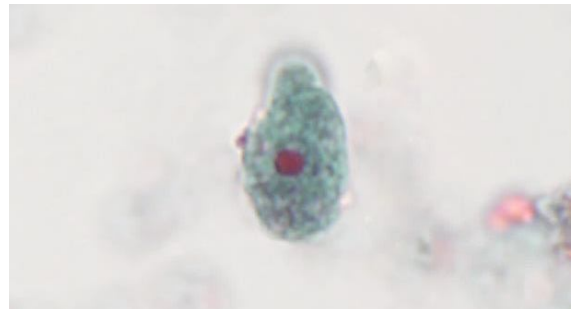


嗜碘阿米巴-活動體
(*I. buetschlii* - Trophozoite)

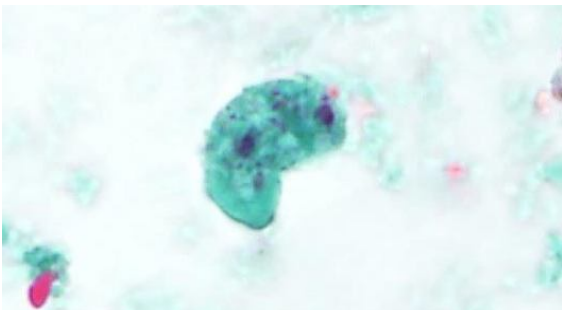


(Iron hematoxylin stain)

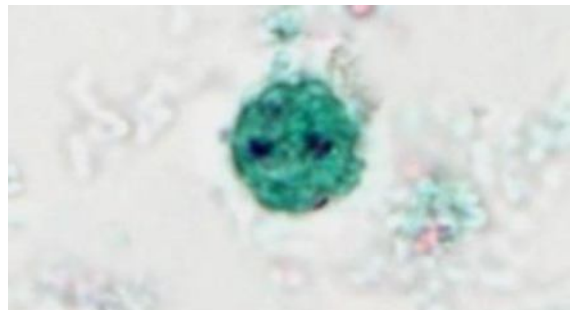
微小阿米巴-囊體
(*Endolimax nana* - Cyst)



微小阿米巴-活動體
(*E. nana* - Trophozoite)



雙核阿米巴-活動體
(*Dientamoeba fragilis* - Trophozoite)

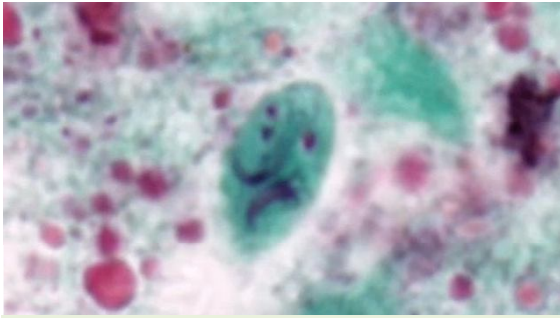


雙核阿米巴-活動體
(*D. fragilis* - Trophozoite)



人體腸道原蟲圖譜④

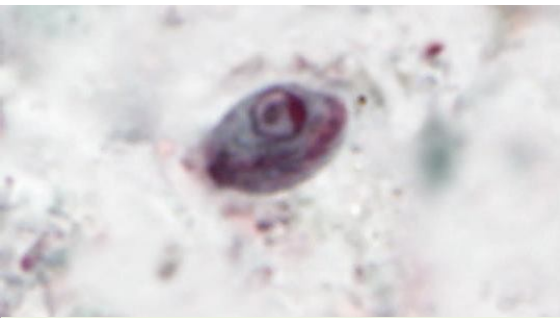
Trichrome stain (1000X)



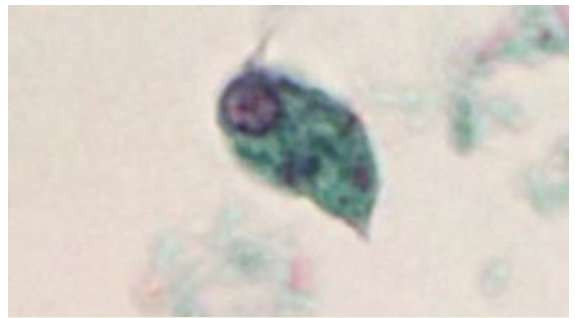
梨形鞭毛蟲-囊體
(*Giardia lamblia* - Cyst)



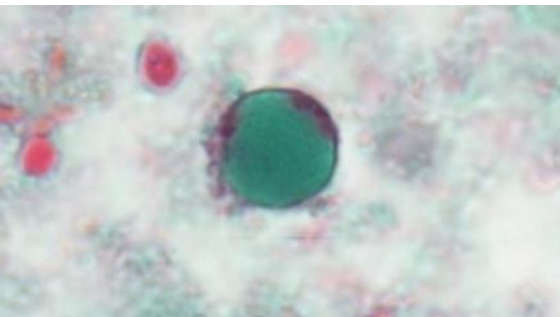
梨形鞭毛蟲-活動體
(*G. lamblia* - Trophozoite)



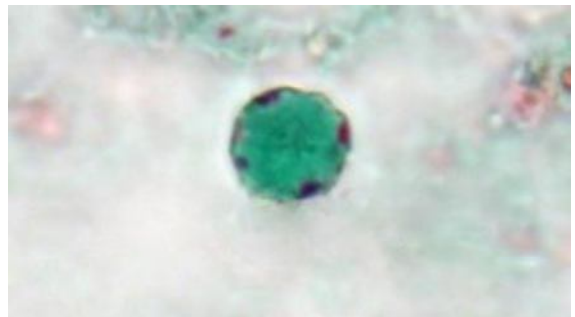
唇形鞭毛蟲-囊體
(*Chilomastix mesnili* - Cyst)



唇形鞭毛蟲-活動體
(*C. mesnili* - Trophozoite)



人芽囊原蟲
(*Blastocystis hominis*)



人芽囊原蟲
(*B. hominis*)



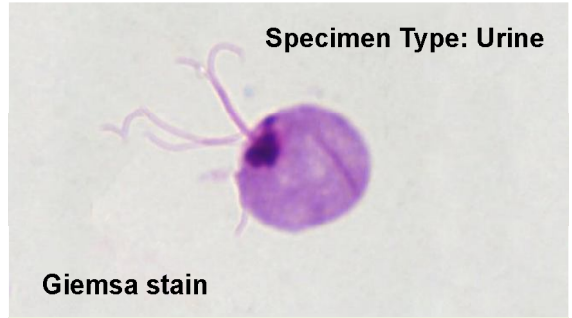
人體腸道原蟲圖譜⑤

(1000X)



MIF stain

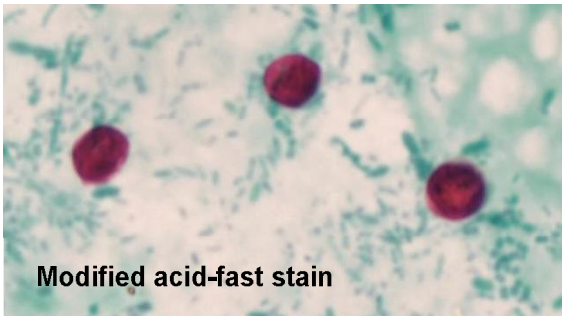
貝氏等孢子蟲-卵囊
(*Isospora belli* - Oocyst)



Specimen Type: Urine

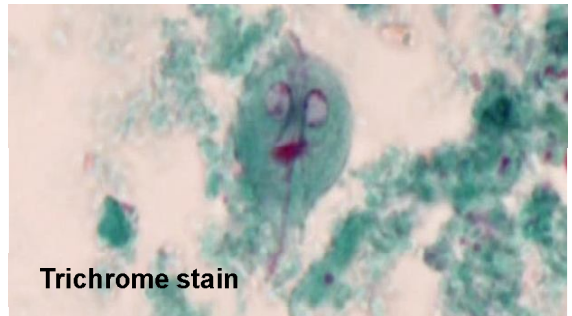
Giemsa stain

陰道滴蟲-活動體
(*Trichomonas vaginalis* - Trophozoite)



Modified acid-fast stain

隱孢子蟲-卵囊
(*Cryptosporidium parvum* - Oocysts)



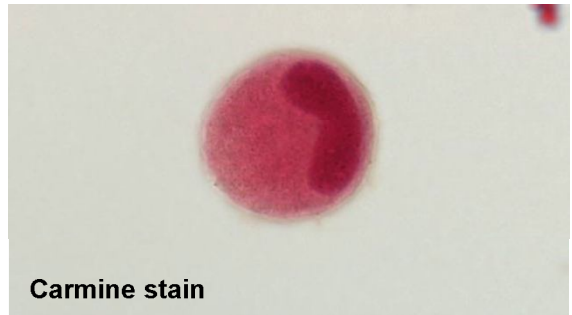
Trichrome stain

梨形鞭毛蟲-活動體
(*Giardia lamblia* - Trophozoite)



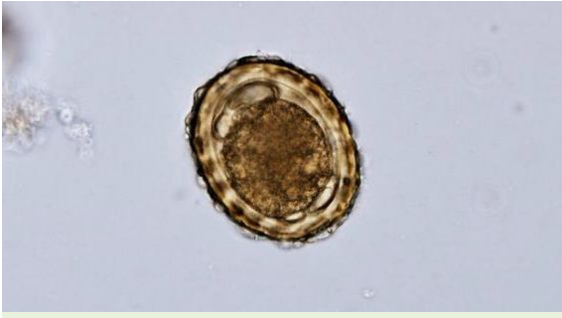
Iron hematoxylin stain

大腸纖毛蟲-活動體
(*Balantidium coli* - Trophozoite)



Carmine stain

大腸纖毛蟲-囊體
(*B. coli* - Cyst)



蛔蟲受精卵
(Fertilized egg of *Ascaris lumbricoides*)



鉤蟲卵
(Hook worm egg)



蛔蟲未受精卵
(Unfertilized egg of *A. lumbricoides*)



MIF stain

生殖原基

糞小桿線蟲-桿狀幼蟲
(Rhabditiform larva of *Strongyloides stercoralis*)



蛔蟲受精卵 (已脫蛋白膜)
(Fertilized decorticated eggs of *A. lumbricoides*)



東方毛線蟲卵
(*Trichostrongylus orientalis* egg)



鞭蟲卵
(*Trichuris trichiura* egg)



蟯蟲卵
(*Enterobius vermicularis* egg)



菲律賓毛線蟲卵
(*Capillaria philippinensis* egg)



MIF stain

美麗筒線蟲卵
(*Gongylonema pulchrum* egg)



肝毛線蟲卵
(*Capillaria hepatica* egg)



MIF stain

糞小桿線蟲-桿狀幼蟲
(Rhabditiform larva of *Strongyloides stercoralis*)



衛氏肺吸蟲卵
(*Paragonimus westermani* egg)



中華肝吸蟲卵
(*Clonorchis sinensis* eggs)



胰臟吸蟲卵
(*Eurytrema pancreaticum* egg)



泰國肝吸蟲卵
(*Opisthorchis viverrini* egg)



鈎蟲-桿狀幼蟲
(Hookworm rhabditiform larva)



糞小桿線蟲-桿狀幼蟲
(Rhabditiform larva of *Strongyloides stercoralis*)

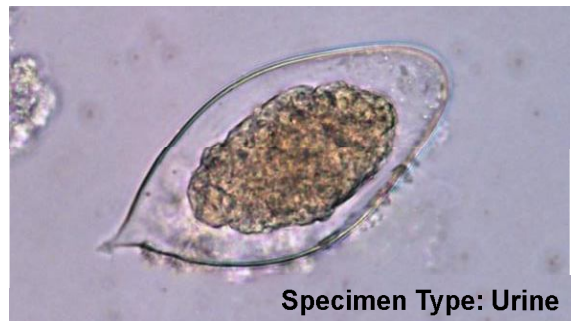


人體腸道蠕蟲卵圖譜④

Unstain (400X)



薑片蟲卵
(*Fasciolopsis buski* egg)



Specimen Type: Urine
埃及血吸蟲卵
(*Schistosoma haematobium* egg)



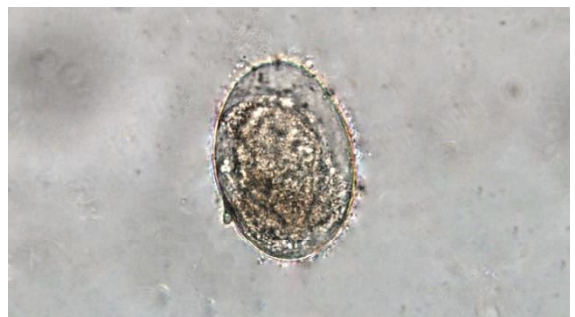
棘口吸蟲卵
(*Echinostoma* spp. egg)



曼氏血吸蟲卵
(*Schistosoma mansoni* egg)



牛羊肝吸蟲卵
(*Fasciola hepatica* egg)

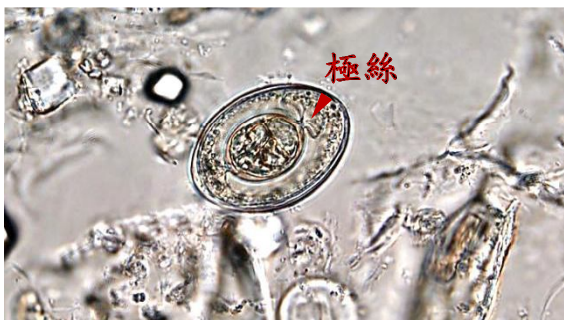


日本血吸蟲卵
(*Schistosoma japonicum* egg)



人體腸道蠕蟲卵圖譜⑤

Unstain (400X)



短小包膜條蟲卵
(*Hymenolepis nana* egg)



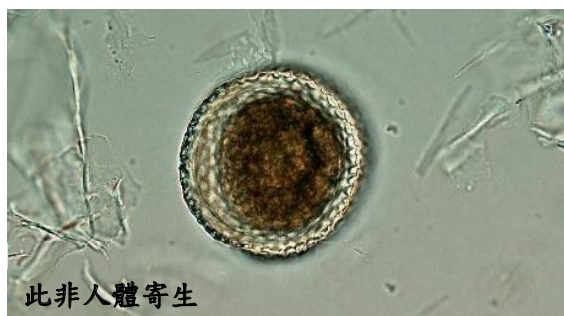
縮小包膜條蟲卵
(*Hymenolepis diminuta* egg)



曼氏裂頭條蟲卵
(*Spirometra mansoni* egg)



廣節裂頭條蟲卵
(*Diphyllobothrium latum* egg)



此非人體寄生

犬蛔蟲卵
(*Toxocara canis* egg)



豬(牛)肉條蟲卵
(*Taenia* spp. eggs)