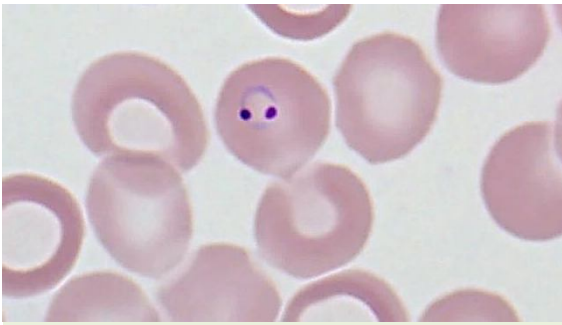


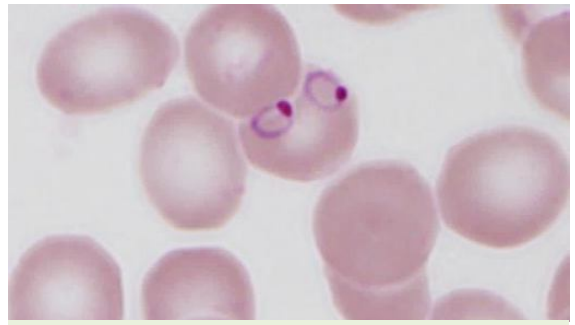


# 人體血液寄生蟲圖譜①

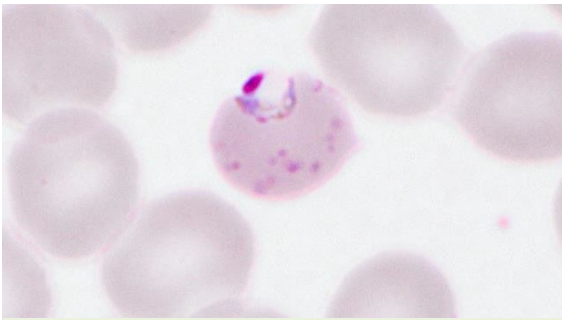
姬姆薩染色薄層血片 (Giemsa stained thin blood films)



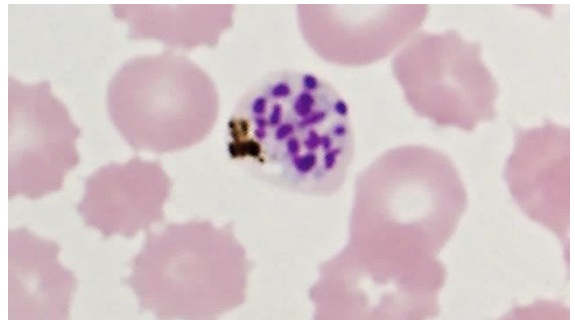
惡性瘧原蟲-環狀體  
(*Plasmodium falciparum* - ring form)



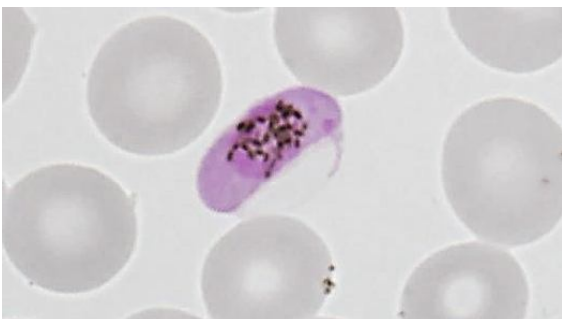
惡性瘧原蟲-環狀體  
(*P. falciparum* - ring forms)



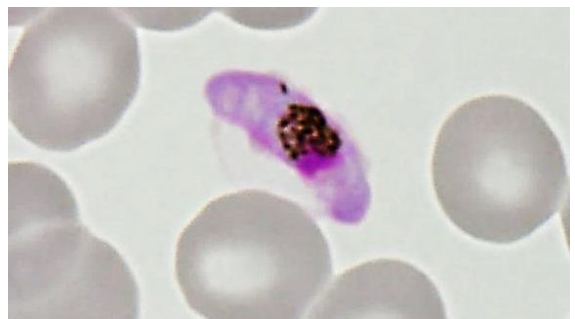
惡性瘧原蟲-活動體  
(*P. falciparum* - trophozoite)



惡性瘧原蟲-分裂體  
(*P. falciparum* - schizont)



惡性瘧原蟲-小配子體 (雄)  
[*P. falciparum* - microgametocyte (male)]

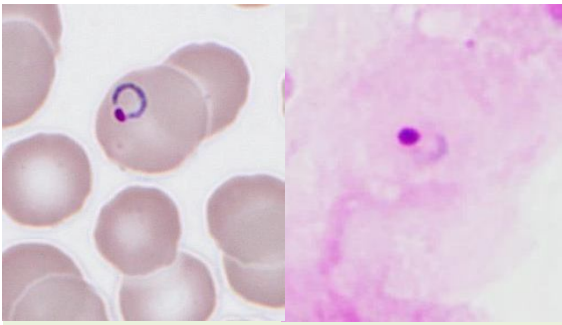


惡性瘧原蟲-大配子體 (雌)  
[*P. falciparum* - macrogametocyte (female)]

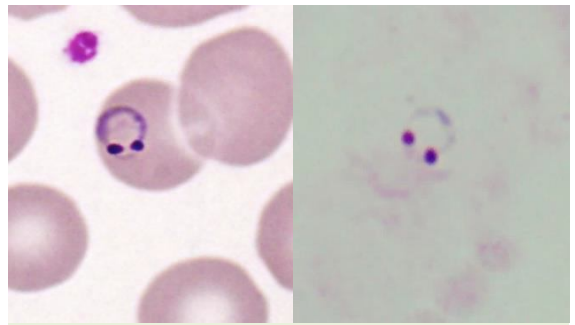


# 人體血液寄生蟲圖譜②

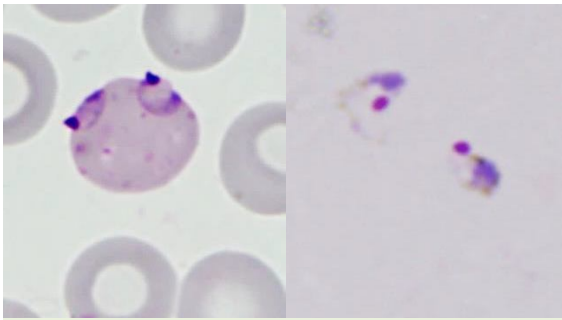
姬姆薩染色薄層 (左) 及厚層 (右) 血片 [Giemsa stained thin (left) and thick (right) blood films]



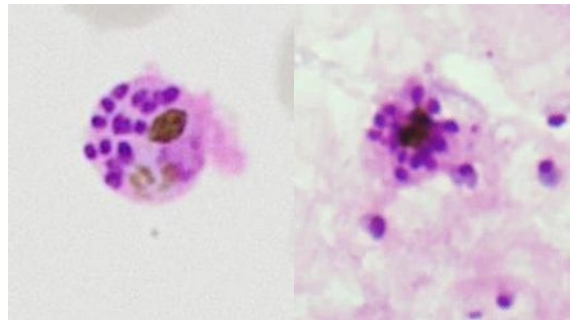
惡性瘧原蟲-環狀體  
(*Plasmodium falciparum* - ring forms)



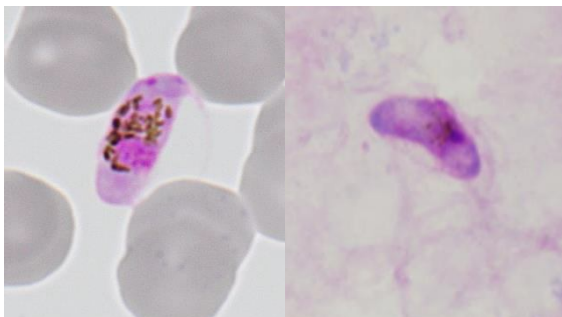
惡性瘧原蟲-環狀體  
(*P. falciparum* - ring forms)



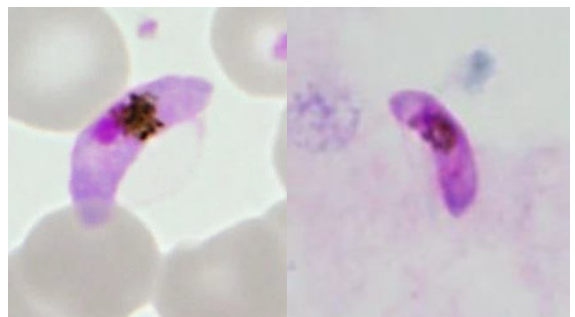
惡性瘧原蟲-活動體  
(*P. falciparum* - trophozoites)



惡性瘧原蟲-分裂體  
(*P. falciparum* - schizonts)



惡性瘧原蟲-小配子體 (雄)  
[*P. falciparum* - microgametocytes (male)]

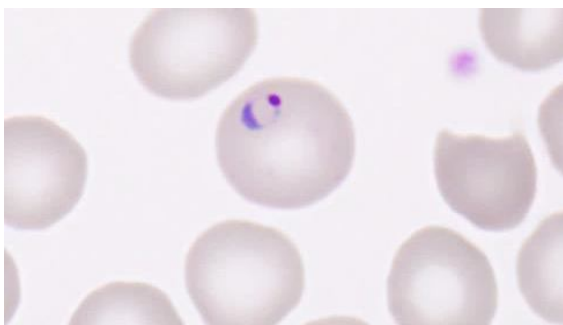


惡性瘧原蟲-大配子體 (雌)  
[*P. falciparum* - macrogametocytes (female)]

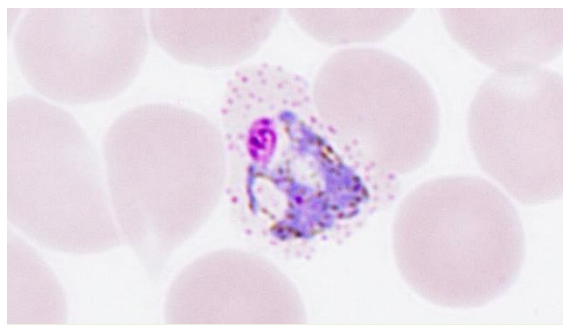


# 人體血液寄生蟲圖譜③

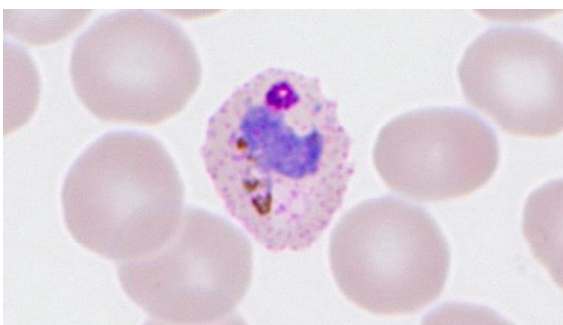
姬姆薩染色薄層血片 (Giemsa stained thin blood films)



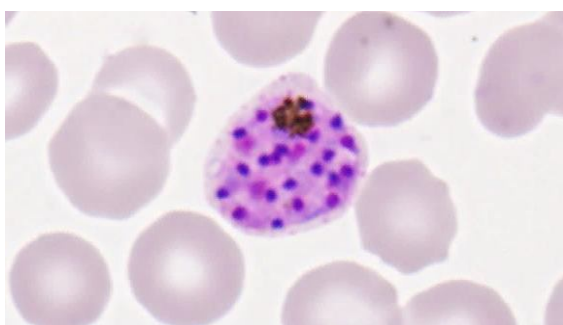
間日瘧原蟲-環狀體  
(*Plasmodium vivax* - ring form)



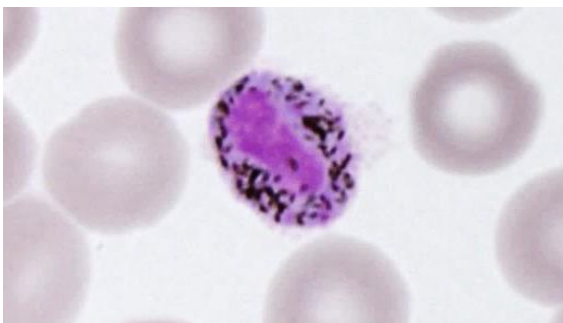
間日瘧原蟲-活動體  
(*P. vivax* - trophozoite)



間日瘧原蟲-活動體  
(*P. vivax* - trophozoite)



間日瘧原蟲-分裂體  
(*P. vivax* - schizont)



間日瘧原蟲-小配子體 (雄)  
[*P. vivax* - microgametocyte (male)]



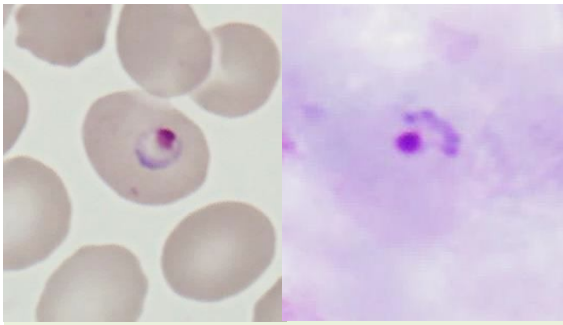
間日瘧原蟲-大配子體 (雌)  
[*P. vivax* - macrogametocyte (female)]



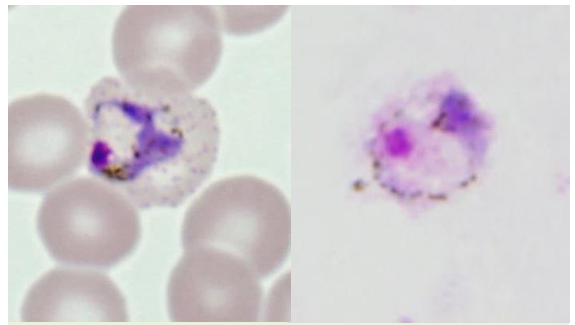


# 人體血液寄生蟲圖譜④

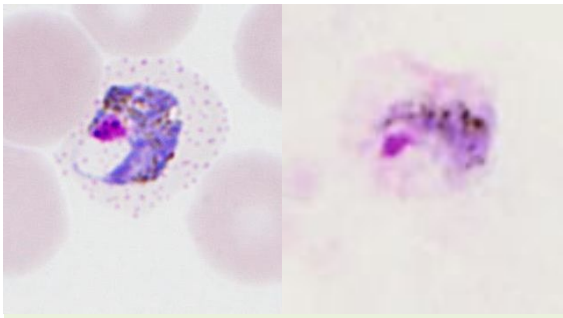
姬姆薩染色薄層 (左) 及厚層 (右) 血片 [Giemsa stained thin (left) and thick (right) blood films]



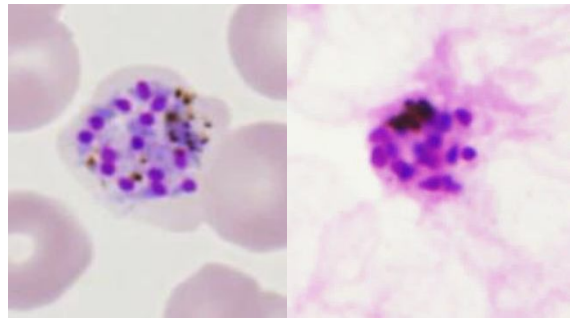
間日瘧原蟲-環狀體  
(*Plasmodium vivax* - ring forms)



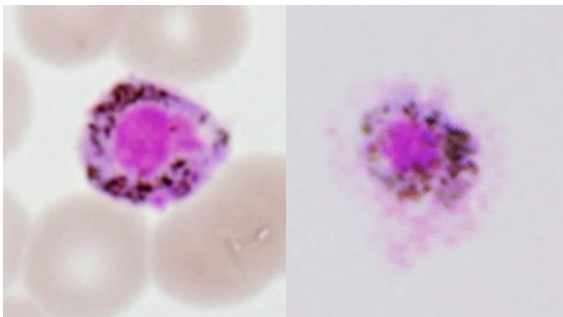
間日瘧原蟲-活動體  
(*P. vivax* - trophozoites)



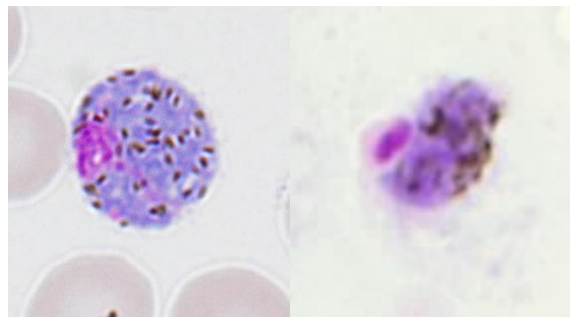
間日瘧原蟲-活動體  
(*P. vivax* - trophozoites)



間日瘧原蟲-分裂體  
(*P. vivax* - schizonts)



間日瘧原蟲-小配子體 (雄)  
[*P. vivax* - microgametocytes (male)]



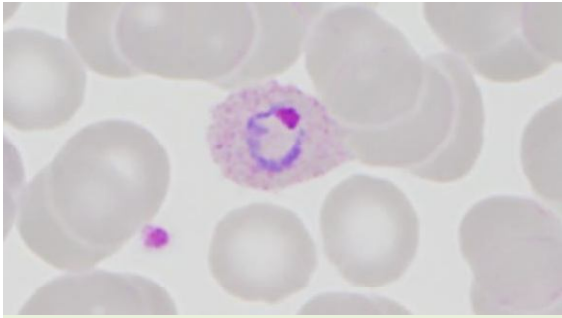
間日瘧原蟲-大配子體 (雌)  
[*P. vivax* - macrogametocytes (female)]



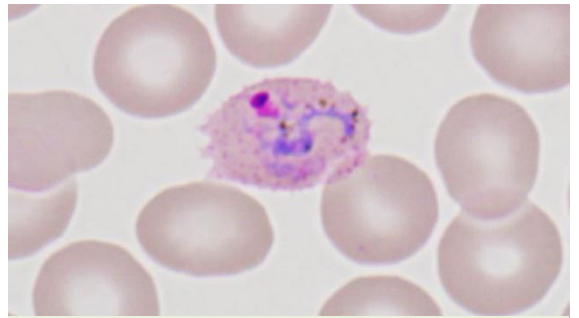


# 人體血液寄生蟲圖譜⑤

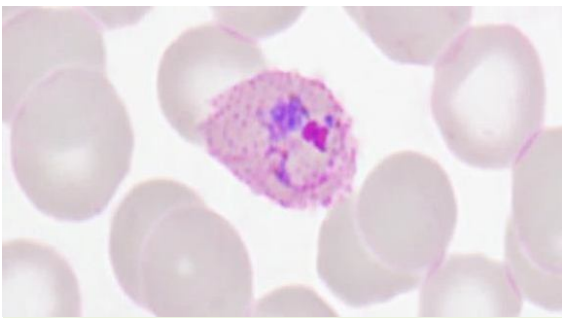
姬姆薩染色薄層血片 (Giemsa stained thin blood films)



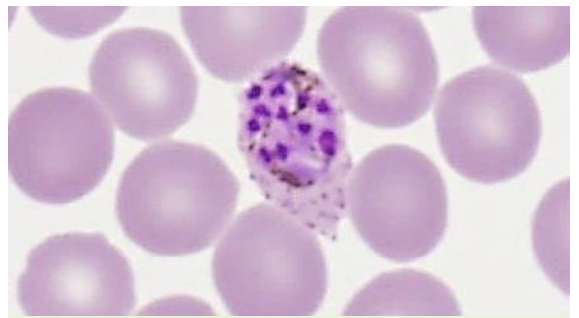
卵圓瘧原蟲-環狀體  
(*Plasmodium ovale* - ring form)



卵圓瘧原蟲-活動體  
(*P. ovale* - trophozoite)



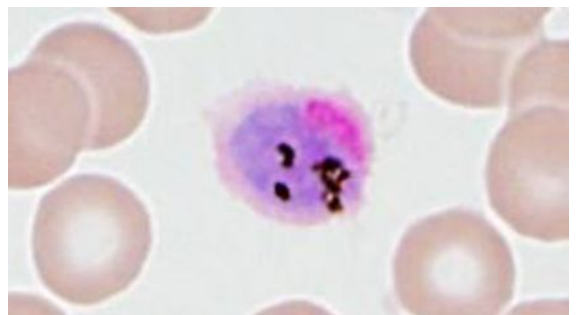
卵圓瘧原蟲-活動體  
(*P. ovale* - trophozoite)



卵圓瘧原蟲-分裂體  
(*P. ovale* - schizont)



卵圓瘧原蟲-小配子體 (雄)  
[*P. ovale* - microgametocyte (male)]

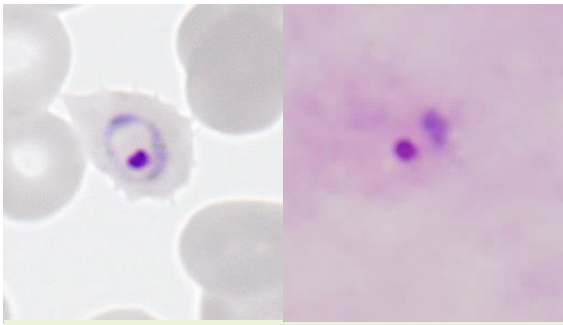


卵圓瘧原蟲-大配子體 (雌)  
[*P. ovale* - macrogametocyte (female)]

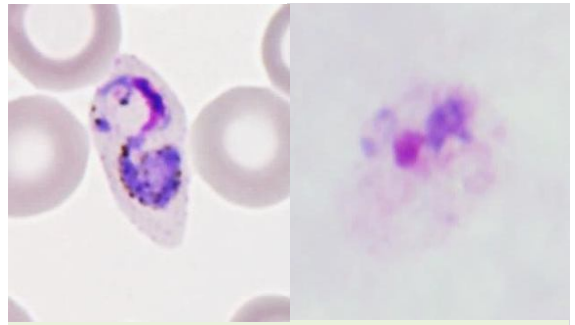


# 人體血液寄生蟲圖譜⑥

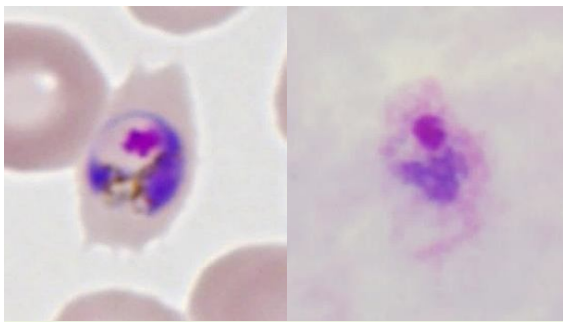
姬姆薩染色薄層 (左) 及厚層 (右) 血片 [Giemsa stained thin (left) and thick (right) blood films]



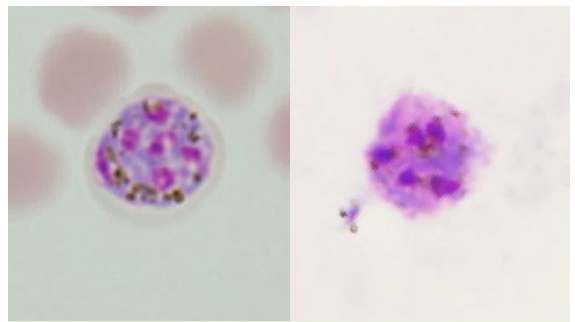
卵圓瘧原蟲-環狀體  
(*Plasmodium ovale* - ring forms)



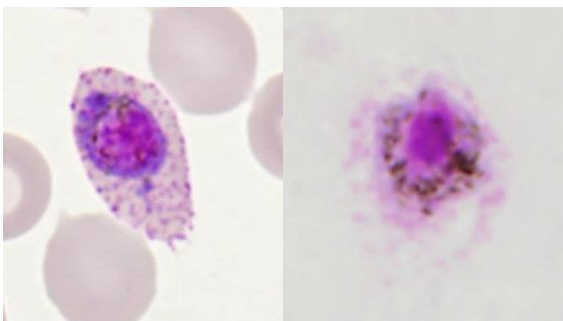
卵圓瘧原蟲-活動體  
(*P. ovale* - trophozoites)



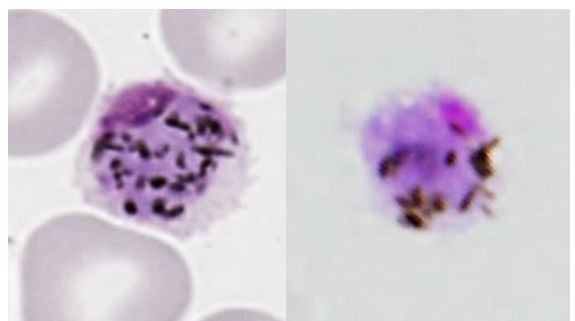
卵圓瘧原蟲-活動體  
(*P. ovale* - trophozoites)



卵圓瘧原蟲-分裂體  
(*P. ovale* - schizonts)



卵圓瘧原蟲-小配子體 (雄)  
[*P. ovale* - microgametocytes (male)]

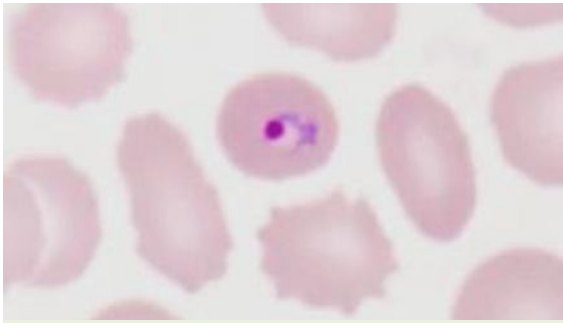


卵圓瘧原蟲-大配子體 (雌)  
[*P. ovale* - macrogametocytes (female)]

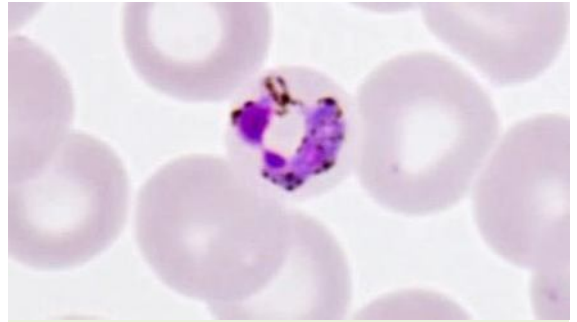


# 人體血液寄生蟲圖譜⑦

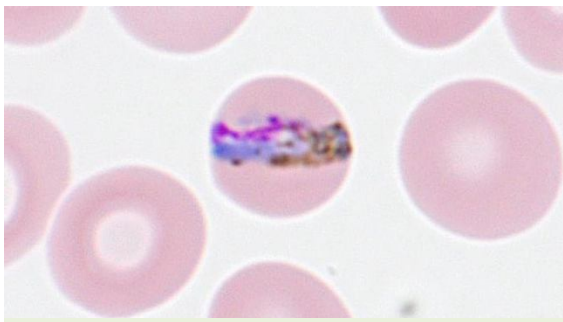
姬姆薩染色薄層血片 (Giemsa stained thin blood films)



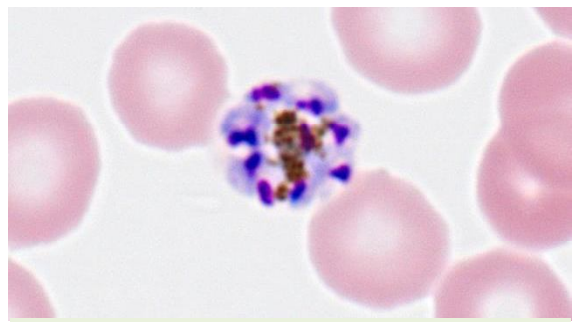
三日瘧原蟲-環狀體  
(*Plasmodium malariae* - ring form)



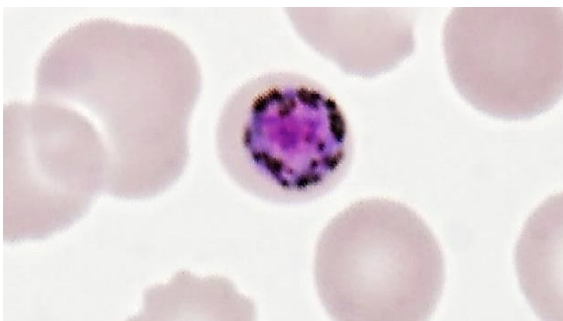
三日瘧原蟲-活動體  
(*P. malariae* - trophozoite)



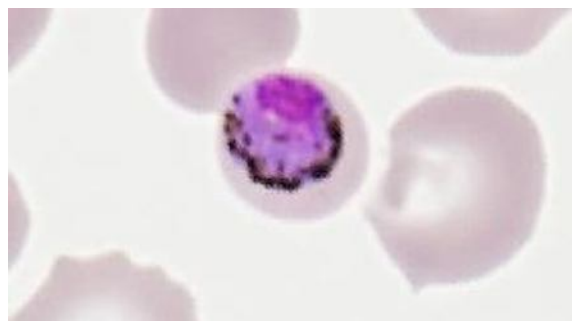
三日瘧原蟲-活動體  
(*P. malariae* - trophozoite)



三日瘧原蟲-分裂體  
(*P. malariae* - schizont)



三日瘧原蟲-小配子體 (雄)  
[*P. malariae* - microgametocyte (male)]



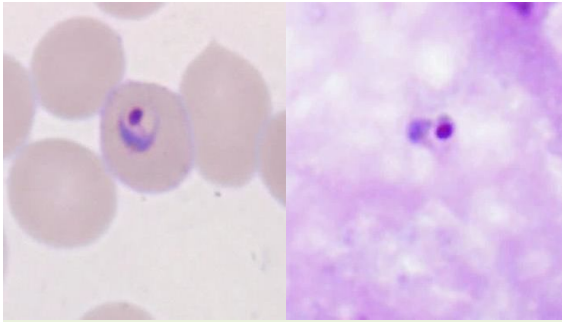
三日瘧原蟲-大配子體 (雌)  
[*P. malariae* - macrogametocyte (female)]



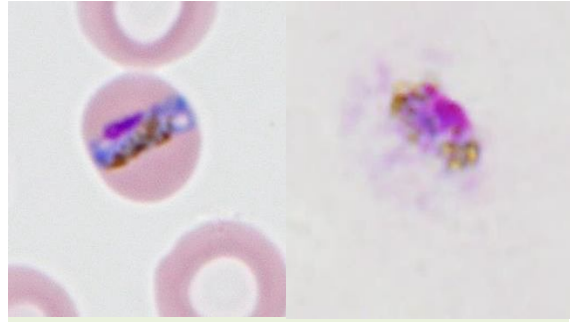


# 人體血液寄生蟲圖譜⑧

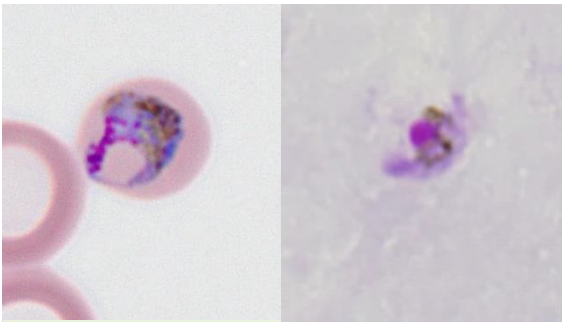
姬姆薩染色薄層 (左) 及厚層 (右) 血片 [Giemsa stained thin (left) and thick (right) blood films]



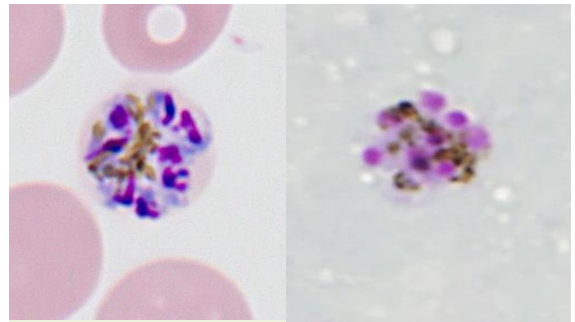
三日瘧原蟲-環狀體  
(*Plasmodium malariae* - ring forms)



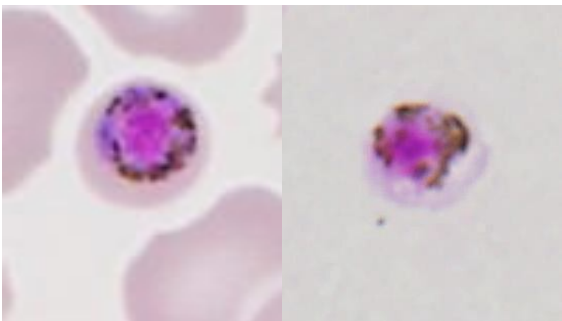
三日瘧原蟲-活動體  
(*P. malariae* - trophozoites)



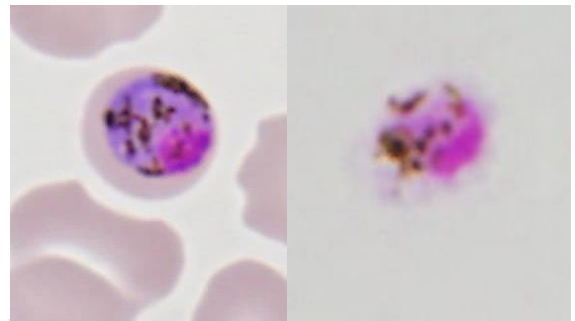
三日瘧原蟲-活動體  
(*P. malariae* - trophozoites)



三日瘧原蟲-分裂體  
(*P. malariae* - schizonts)



三日瘧原蟲-小配子體 (雄)  
[*P. malariae* - microgametocytes (male)]



三日瘧原蟲-大配子體 (雌)  
[*P. malariae* - macrogametocytes (female)]



# 人體血液寄生蟲圖譜⑨

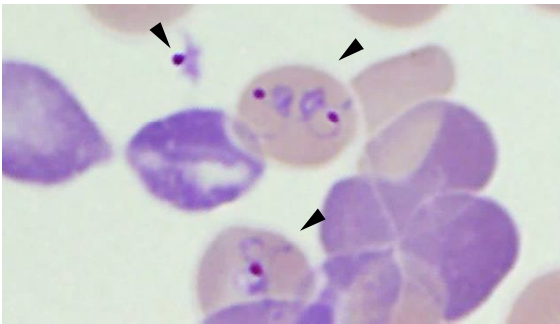
姬姆薩染色薄層血片 (Giemsa stained thin blood films)



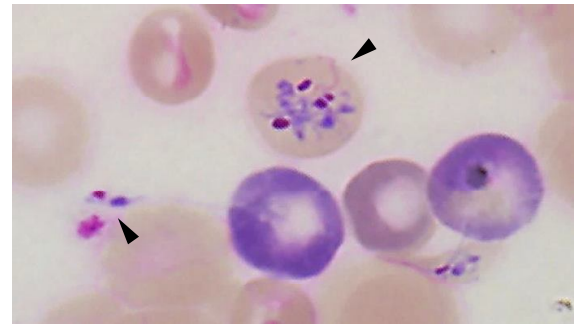
甘比亞錐蟲/羅德西亞錐蟲-錐鞭毛體  
(*Trypanosoma brucei gambiense* / *T. b. rhodesiense* -  
trypomastigote)



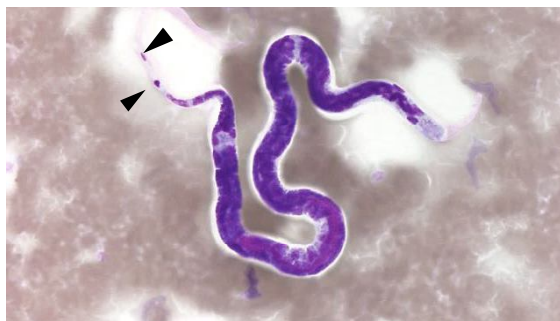
枯西氏錐蟲-錐鞭毛體  
(*Trypanosoma cruzi* - trypomastigote)



巴貝氏蟲  
(*Babesia* species)



巴貝氏蟲  
(*Babesia* species)



馬來絲蟲-微絲蟲  
(*Brugia malayi* - microfilaria)

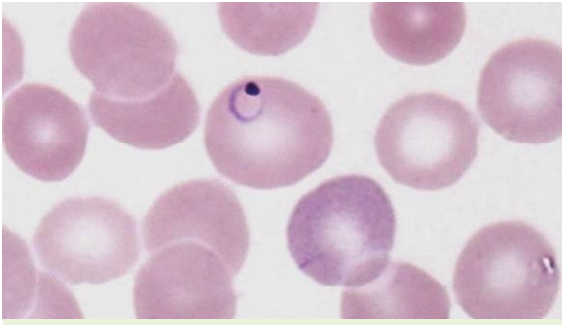


班氏絲蟲-微絲蟲  
(*Wuchereria bancrofti* - microfilaria)

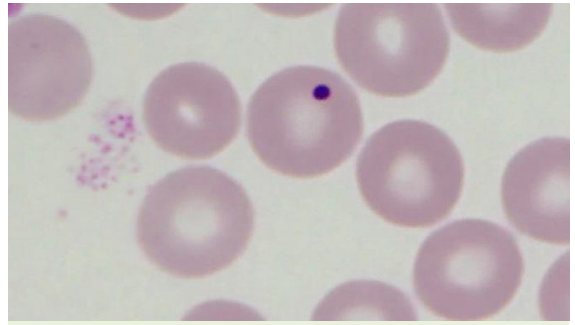


# 瘧原蟲和瘧原蟲相似之物質 ⑩

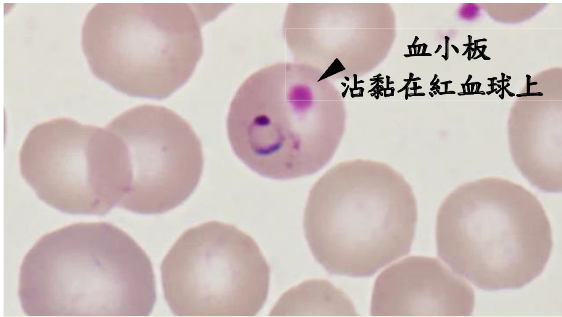
姬姆薩染色薄層血片 (Giemsa stained thin blood films)



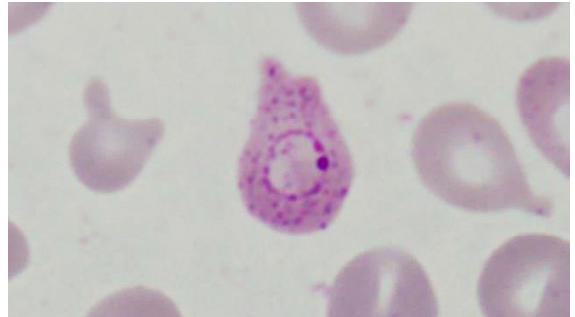
惡性瘧原蟲-環狀體  
(*Plasmodium falciparum* - ring form)



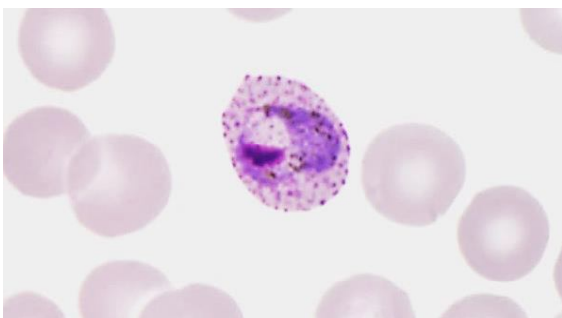
Howell-Jolly 氏小體  
(Howell-Jolly body)



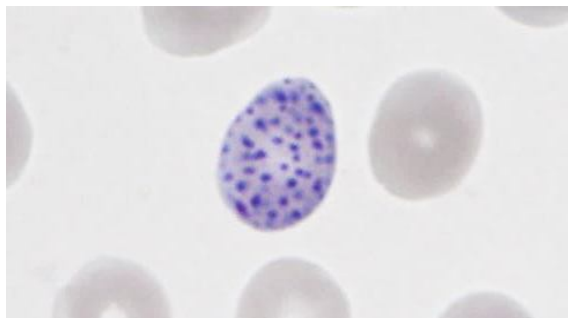
惡性瘧原蟲-環狀體  
(*P. falciparum* - ring form)



Cabot's 環和 Howell-Jolly 氏小體和嗜鹼性點彩  
(Cabot's ring, Howell-Jolly body and basophilic stippling)



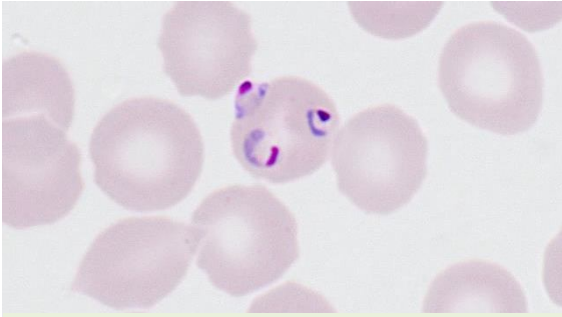
卵圓瘧原蟲-活動體  
(*Plasmodium ovale* - trophozoite)



嗜鹼性點彩  
(Basophilic stippling)



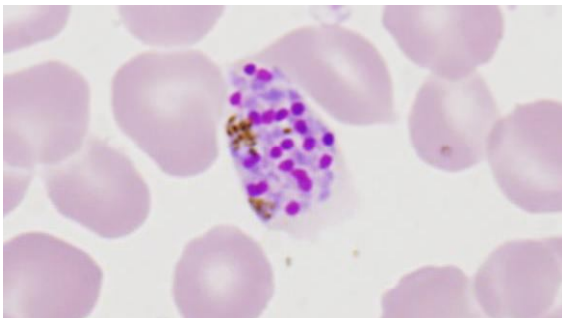
姬姆薩染色薄層血片 (Giemsa stained thin blood films)



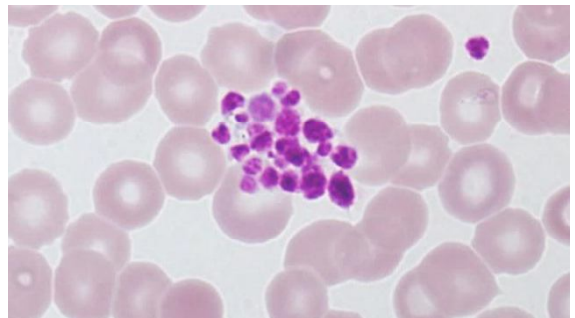
惡性瘧原蟲-環狀體  
(*Plasmodium falciparum* - ring forms)



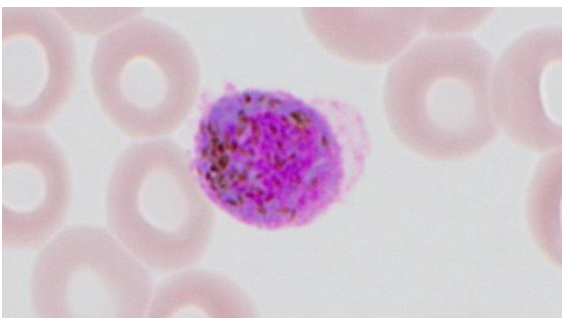
巴貝氏蟲  
(*Babesia* species)



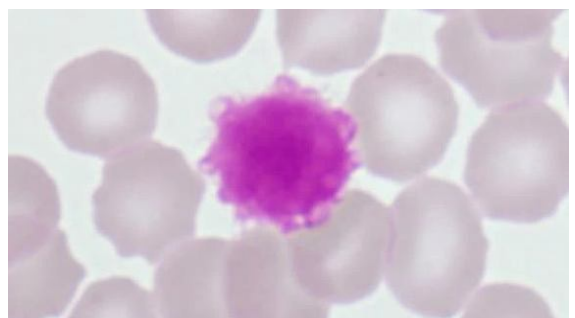
間日瘧原蟲-分裂體  
(*Plasmodium vivax* - schizont)



血小板凝集  
(Platelets clumping)



間日瘧原蟲-小配子體 (雄)  
[*P. vivax* - microgametocyte (male)]

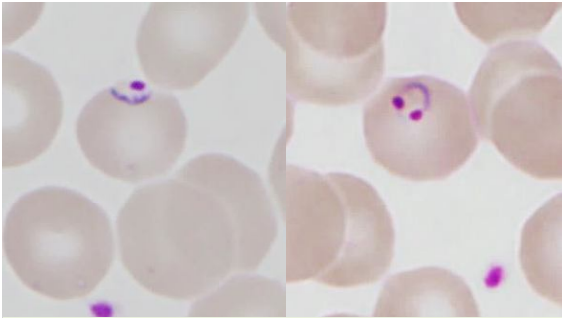


巨大血小板  
(Giant platelet)

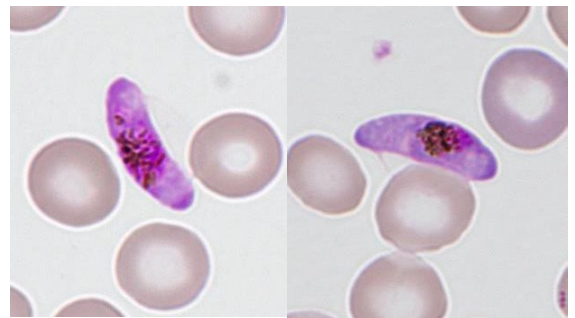


# 人體血液寄生蟲圖譜 ⑫

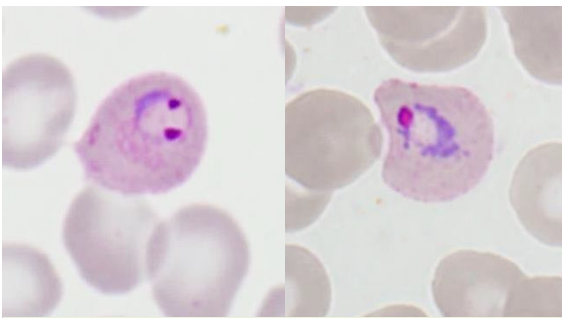
劉氏染色薄層血片 (Liu's stained thin blood films)



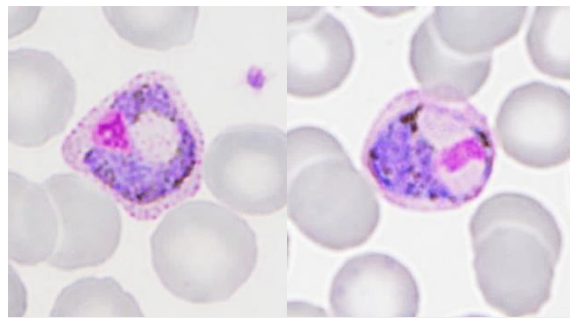
惡性瘧原蟲-環狀體  
(*Plasmodium falciparum* - ring forms)



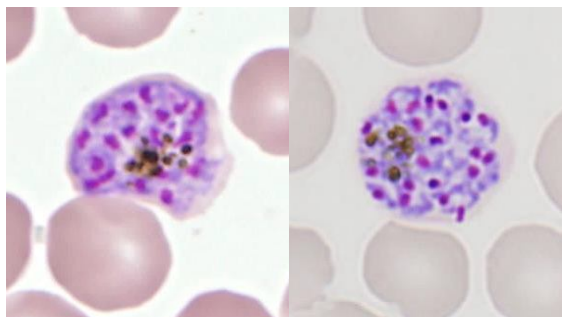
惡性瘧原蟲-配子體  
(*P. falciparum* - gametocytes)



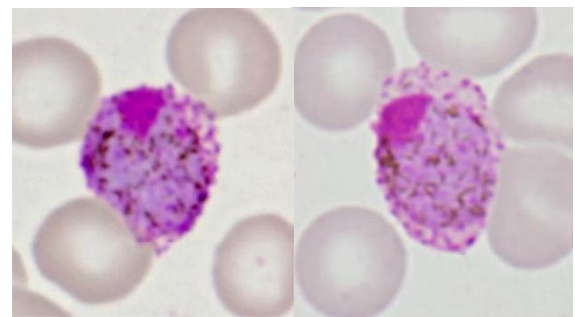
間日瘧原蟲-環狀體  
(*Plasmodium vivax* - ring forms)



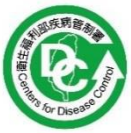
間日瘧原蟲-活動體  
(*P. vivax* - trophozoites)



間日瘧原蟲-分裂體  
(*P. vivax* - schizonts)

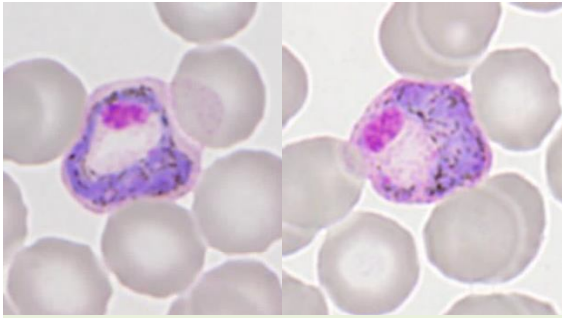


間日瘧原蟲-大配子體 (雌)  
[*P. vivax* - macrogametocytes (female)]

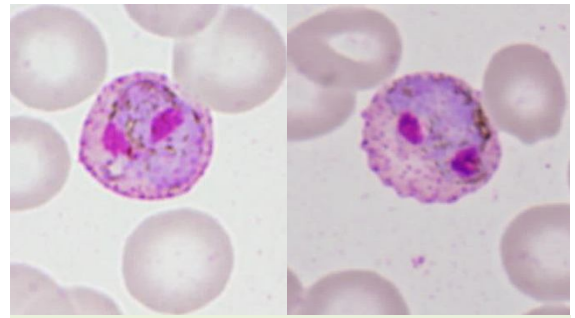


# 人體血液寄生蟲圖譜 ⑬

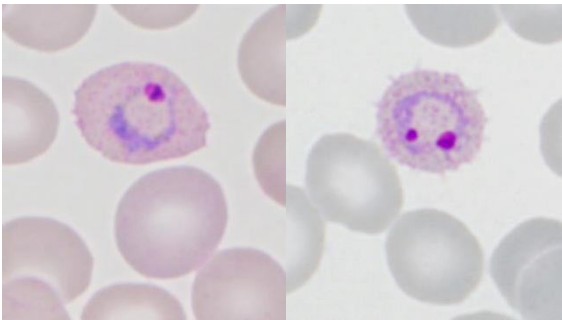
劉氏染色薄層血片 (Liu's stained thin blood films)



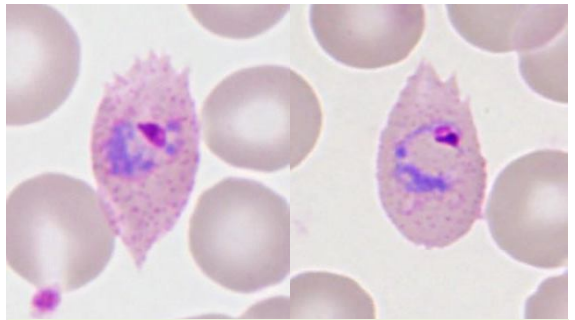
間日瘧原蟲-活動體  
(*Plasmodium vivax* - trophozoites)



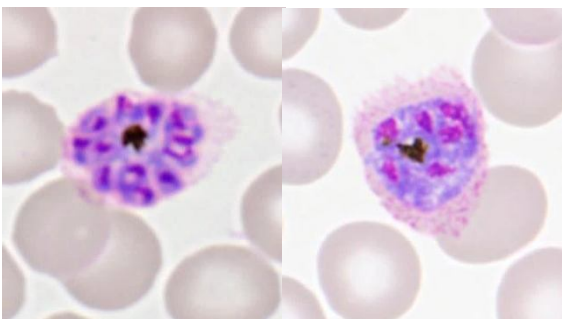
間日瘧原蟲-未成熟分裂體  
(*P. vivax* - immature schizonts)



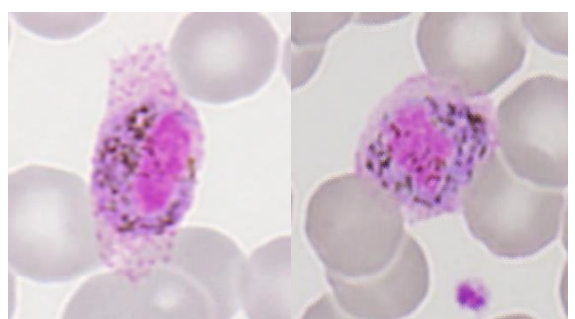
卵圓瘧原蟲-環狀體  
(*Plasmodium ovale* - ring forms)



卵圓瘧原蟲-活動體  
(*P. ovale* - trophozoites)



卵圓瘧原蟲-分裂體  
(*P. ovale* - schizonts)



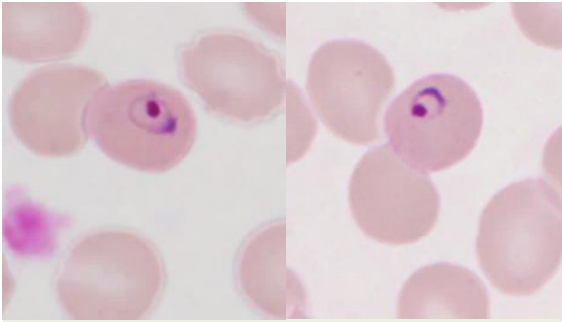
卵圓瘧原蟲-小配子體 (雄)  
[*P. ovale* - microgametocyte (male)]



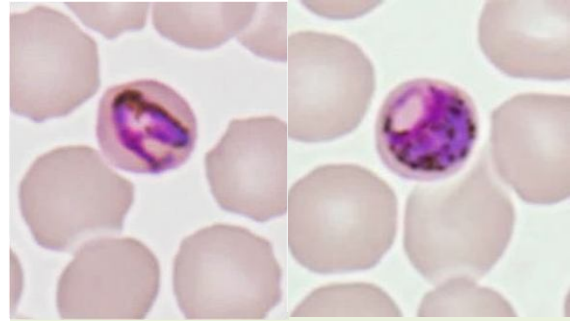


# 人體血液寄生蟲圖譜 14

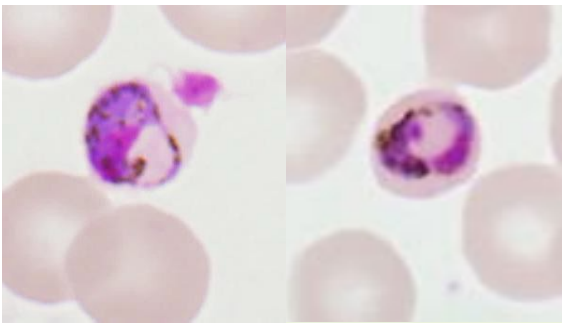
劉氏染色薄層血片 (Liu's stained thin blood films)



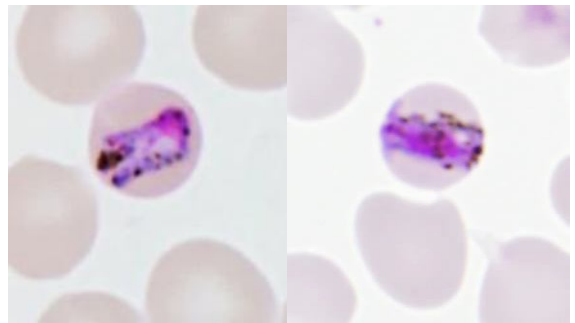
三日瘧原蟲-環狀體  
(*Plasmodium malariae* - ring forms)



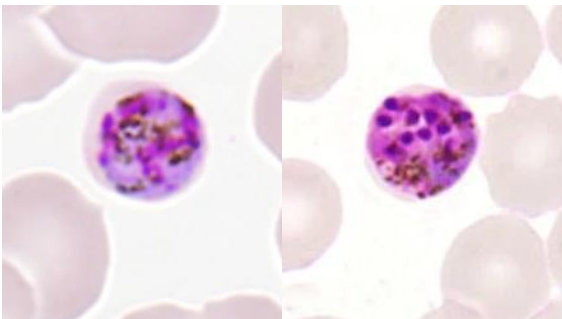
三日瘧原蟲-活動體  
(*P. malariae* - trophozoites)



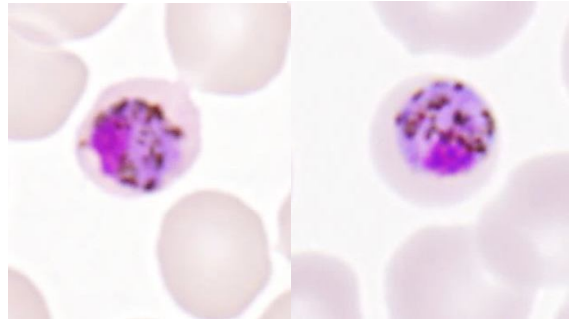
三日瘧原蟲-活動體  
(*P. malariae* - trophozoites)



三日瘧原蟲-活動體  
(*P. malariae* - trophozoites)



三日瘧原蟲-分裂體  
(*P. malariae* - schizonts)

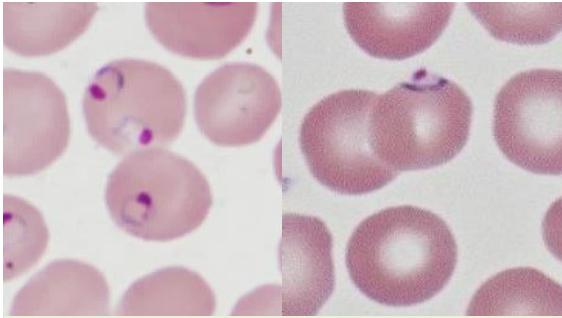


三日瘧原蟲-大配子體 (雌)  
(*P. malariae* - macrogametocytes (female))

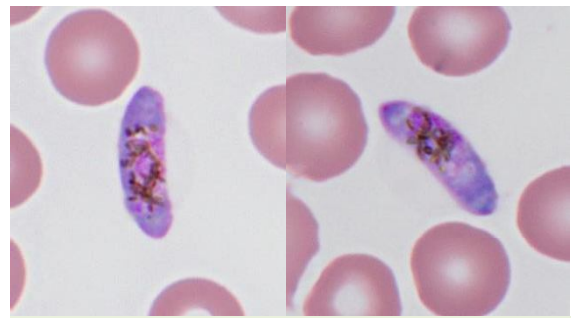


# 人體血液寄生蟲圖譜 ⑮

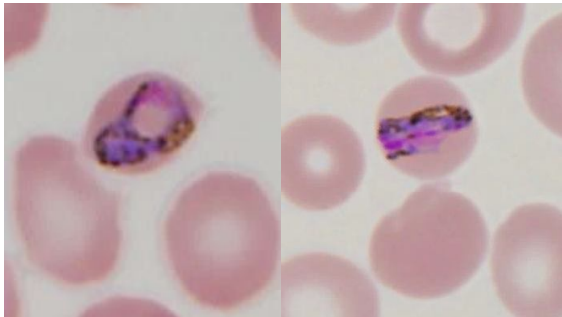
瑞氏-姬姆薩染色薄層血片 (Wright-Giemsa stained thin blood films)



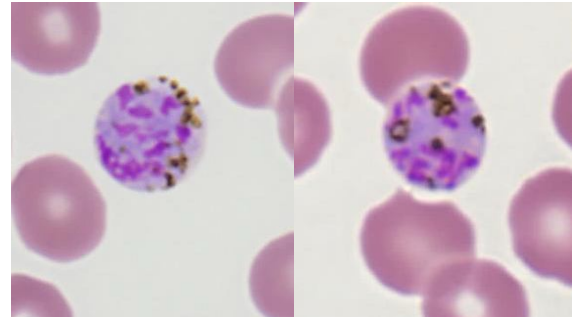
惡性瘧原蟲-環狀體  
(*Plasmodium falciparum* - ring forms)



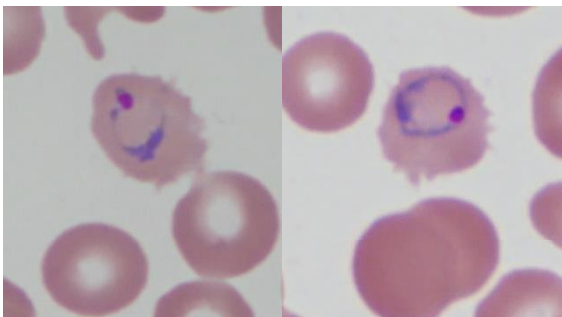
惡性瘧原蟲-配子體  
(*P. falciparum* - gametocytes)



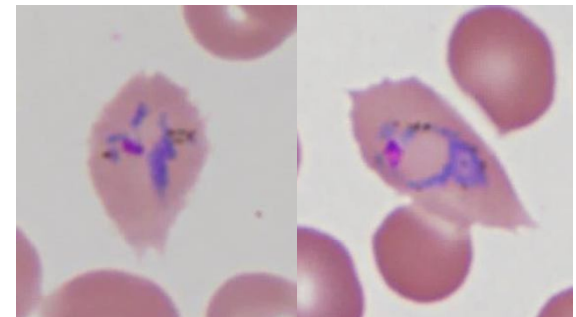
三日瘧原蟲-活動體  
(*Plasmodium malariae* - trophozoites)



三日瘧原蟲-分裂體  
(*P. malariae* - schizonts)



卵圓瘧原蟲-環狀體  
(*Plasmodium ovale* - ring forms)

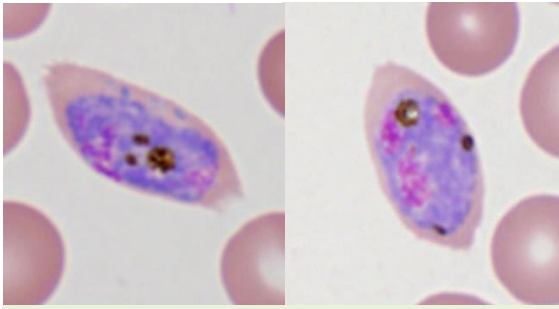


卵圓瘧原蟲-活動體  
(*P. ovale* - trophozoites)

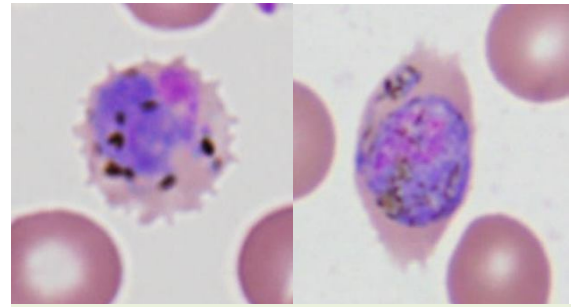


# 人體血液寄生蟲圖譜 ①6

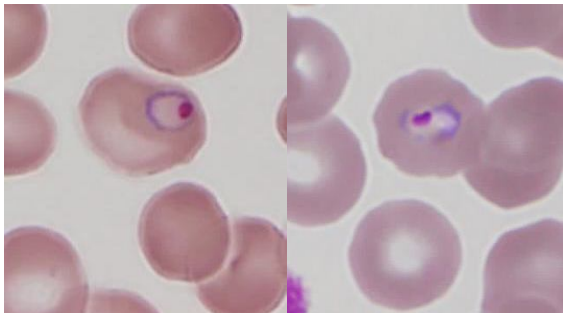
瑞氏-姬姆薩染色薄層血片 (Wright-Giemsa stained thin blood films)



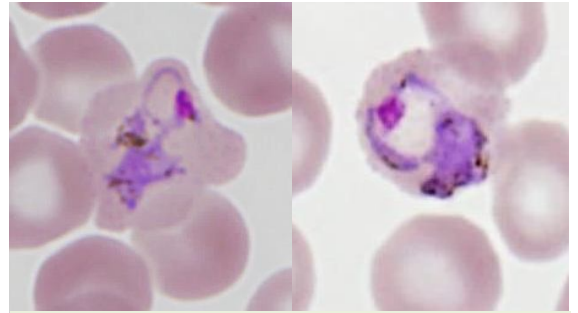
卵圓瘧原蟲-未成熟分裂體  
(*Plasmodium ovale* - immature schizonts)



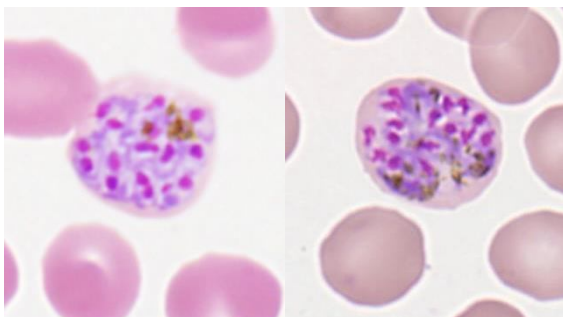
卵圓瘧原蟲-配子體  
(*P. ovale* - gametocytes)



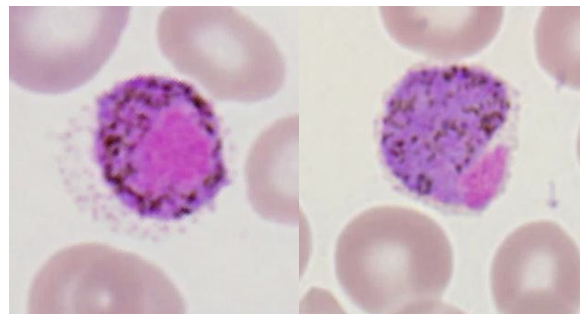
間日瘧原蟲-環狀體  
(*Plasmodium vivax* - ring forms)



間日瘧原蟲-活動體  
(*P. vivax* - trophozoites)



間日瘧原蟲-分裂體  
(*P. vivax* - schizonts)



間日瘧原蟲-配子體  
(*P. vivax* - gametocytes)